

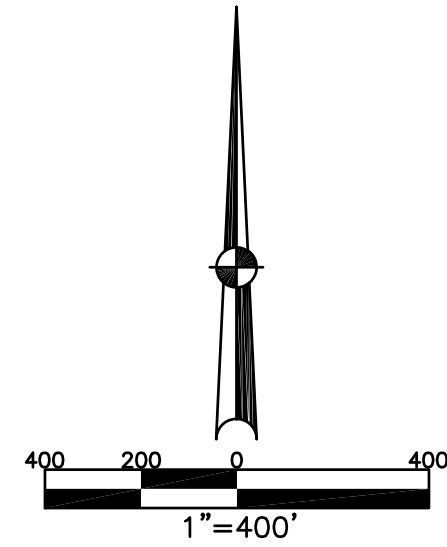
WASHINGTON TWP.
MIAMI COUNTY, OHIO

SECTION 22 TOWN 8 RANGE 5

SMDA NUMBER
M40-WA014 -
PIQUA CITY SCHOOL DISTRICT

SMDA NUMBER
M41-WA014 -
COVINGTON EXEMPTED VILLAGE
SCHOOL DISTRICT

PLAT 14



ABBREVIATION LEGEND

2014OR-07759 = RECORDER'S DOCUMENT NUMBER
OR 406-509 = OFFICIAL RECORD 406 PAGE 509
D.B. 613-172 = DEED BOOK 613, PAGE 172
REC. 15-72 = RECORDER'S PLAT BOOK 15, PAGE 72
LND. 33-15 = LAND SURVEY VOLUME 33, PAGE 15
LOT 19-12 = LOT SURVEY VOLUME 19, PAGE 12
R.R. 8-29 = ROAD RECORD VOLUME 8, PAGE 29
R/W = RIGHT OF WAY
C. = CENTERLINE
AC. = ACRES
TWP. = TOWNSHIP
TR. = TRACT
② = LOT CREATED BY RECORDER'S PLAT

SURVEY INDEX

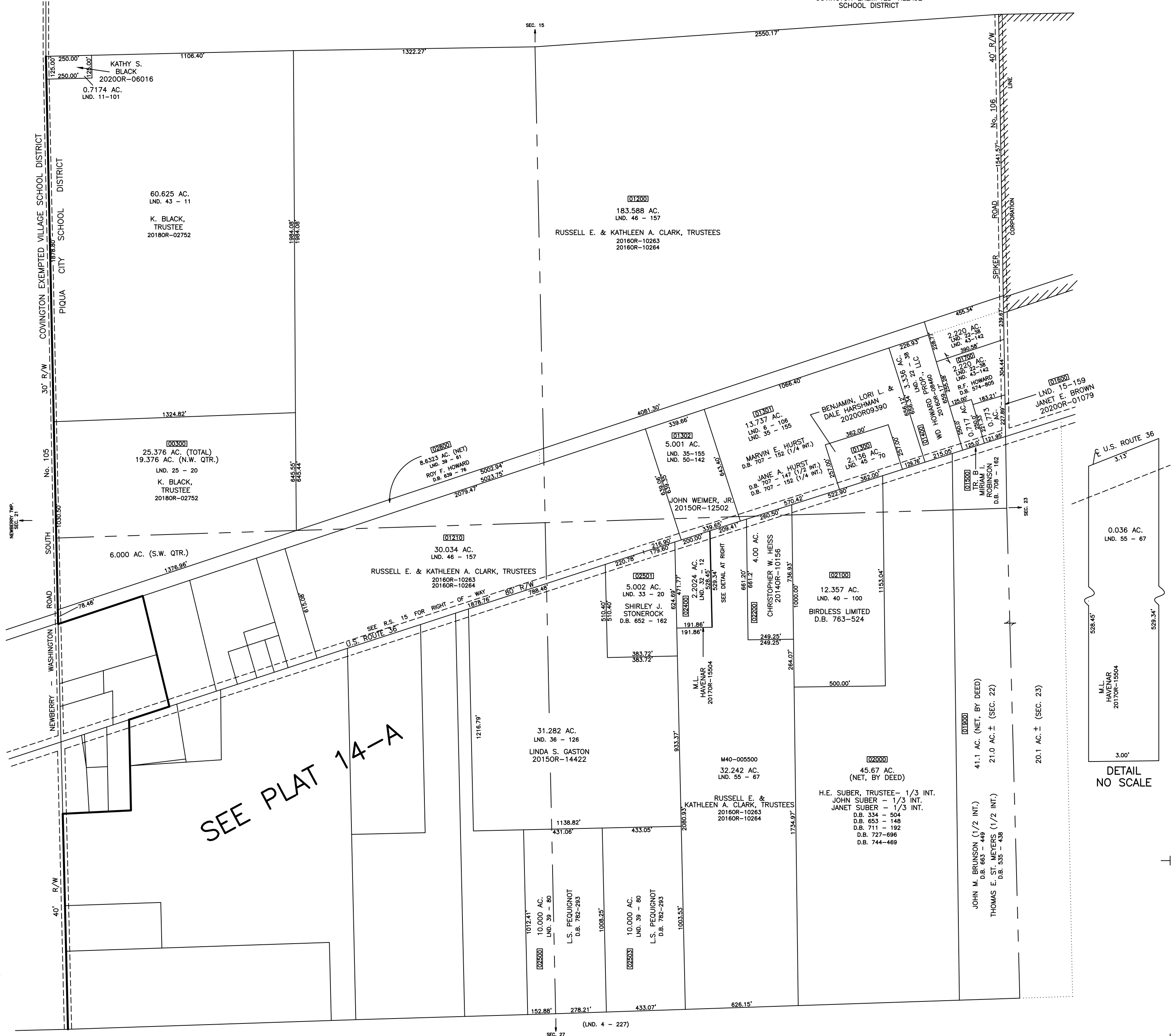
NORTHWEST QUARTER		
LND. 2 - 199		
LND. 11 - 101		
LND. 25 - 20		
LND. 39 - 81		
LND. 43 - 11		
LND. 45 - 142		
LND. 46 - 157		

NORTHEAST QUARTER		
LND. 2 - 199		
LND. 4 - 187		
LND. 6 - 106		
LND. 15 - 159		
LND. 22 - 38		
LND. 35 - 155		
LND. 39 - 61		
LND. 43 - 100		
LND. 45 - 142		
LND. 46 - 70		
LND. 48 - 157		
LND. 50 - 142		

SOUTHWEST QUARTER			
LND. 2 - 199			
LND. 4 - 311			
LND. 6 - 227			
LND. 32 - 12			
LND. 33 - 20			
LND. 35 - 155			
LND. 36 - 126			
LND. 39 - 80			
LND. 40 - 100			
LND. 46 - 157			
LND. 55 - 67			

SOUTHWEST QUARTER		
LND. 2 - 199		
LND. 4 - 311		
LND. 6 - 227		
LND. 4 - 390		
LND. 5 - 33		
LND. 9 - 161		
LND. 10 - 13		
LND. 12 - 51		
LND. 13 - 34		
LND. 13 - 123		
LND. 13 - 157		
LND. 25 - 20		
LND. 30 - 103		
LND. 35 - 1		
LND. 35 - 81		
LND. 36 - 126		
LND. 39 - 80		
LND. 39 - 103		
LND. 40 - 1		
LND. 41 - 158		
LND. 42 - 154		
LND. 42 - 193		
LND. 45 - 131		
LND. 46 - 157		

PREPARED BY: MIAMI COUNTY ENGINEER'S MAP DEPARTMENT
PAUL P. HUELSKAMP, P.E., P.S., COUNTY ENGINEER
DATE: SEPTEMBER 29, 1992
REVISED: July 14, 2020 CSHOUP



DETAIL
NO SCALE