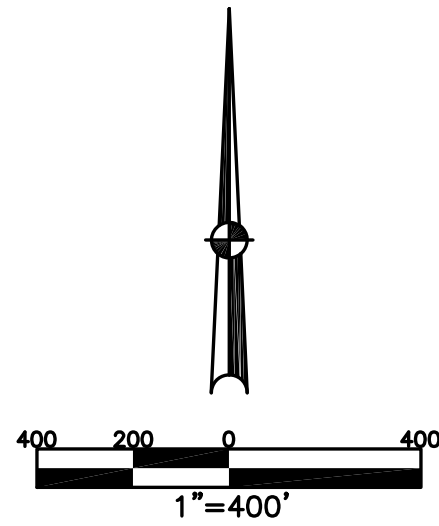


WASHINGTON TWP.
MIAMI COUNTY, OHIO

SECTION 23 TOWN 8 RANGE 5

SMDA NUMBER
M40-WA015-_____

PLAT 15

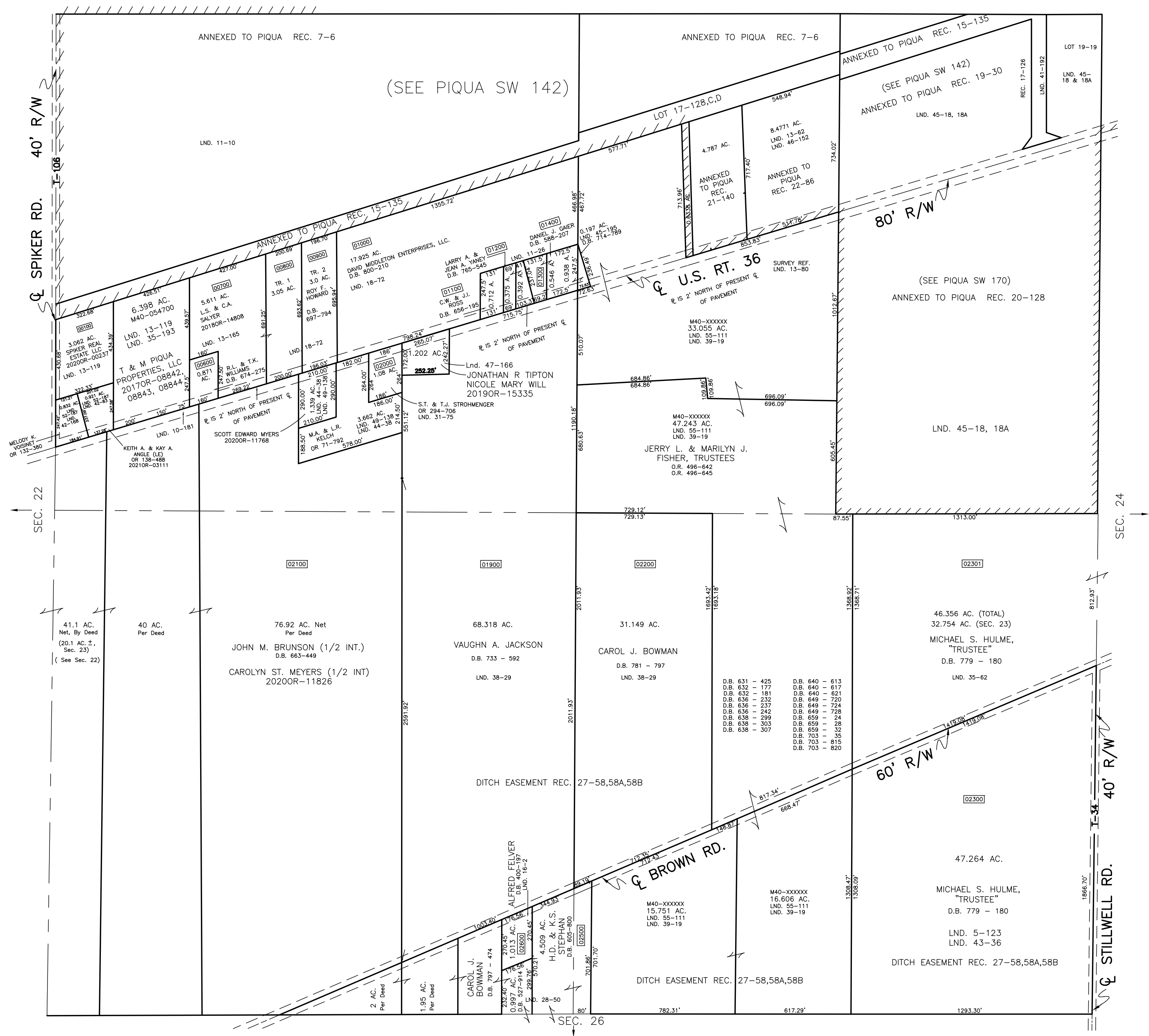


ABBREVIATION LEGEND		
20140R-07759	=	RECORDER'S DOCUMENT NUMBER OR 406-509
D.B. 677-326	=	DEED BOOK 677, PAGE 326
REC. 18-87	=	RECORDER'S PLAT BOOK 18, PAGE 87
LND. 56-145	=	LAND SURVEY VOLUME 56, PAGE 145
LOT 24-200	=	LOT SURVEY VOLUME 24, PAGE 200
R.R. 8-18	=	ROAD RECORD VOLUME 8, PAGE 18
R/W	=	RIGHT OF WAY
CL	=	CENTERLINE
AC.	=	ACRES
TWP.	=	TOWNSHIP
TR.	=	TRACT
②	=	LOT CREATED BY RECORDER'S PLAT

LINE LEGEND	
	Blow-up Boundary
	Property Line
	Lot Split Line
	Centerline
	Section Line
	Right-of-Way Line
	Corporation Line

SURVEY INDEX		
NORTHWEST QUARTER		
LND. 10-181	LND. 42-83	LOT 17-128,C,D
LND. 11-10	LND. 44-38	REC. 7-6
LND. 13-119	LND. 47-166	REC. 15-135,A,B
LND. 13-165	LND. 49-138	
LND. 18-72	LND. 52-187	
LND. 28-50		
LND. 31-75		
LND. 35-193		
LND. 37-167		
LND. 38-29		
NORTHEAST QUARTER		
LND. 13-62	LND. 47-166	LOT 17-128,C,D
LND. 13-80	LND. 55-111	LOT 19-19
LND. 13-193		LOT 19-30
LND. 17-107		REC. 7-6
LND. 23-136		REC. 15-135,A,B
LND. 32-34		REC. 17-126
LND. 39-19		REC. 19-30
LND. 41-192		REC. 20-128
LND. 45-18,18A		REC. 21-140
LND. 45-195		
LND. 46-152		
SOUTHWEST QUARTER		
LND. 4-215		REC. 27-58-58B
LND. 16-2		
LND. 28-50		
LND. 37-167		
LND. 38-29		
LND. 43-36		
SOUTHEAST QUARTER		
LND. 5-123		REC. 27-58-58B
LND. 28-50		
LND. 35-62		
LND. 36-119		
LND. 37-167		
LND. 38-29		
LND. 39-19		
LND. 55-111		

PREPARED BY: MIAMI COUNTY ENGINEER'S MAP DEPARTMENT
PAUL P. HUELSKAMP, COUNTY ENGINEER
DATE: AUGUST 1992
REVISED: February 25, 2021 M5TORMS



PREPARED BY: MIAMI COUNTY ENGINEER'S MAP DEPARTMENT
PAUL P. HUELSKAMP, COUNTY ENGINEER
DATE: AUGUST 1992
REVISED: February 25, 2021 M5TORMS