

PIQUA Corporation

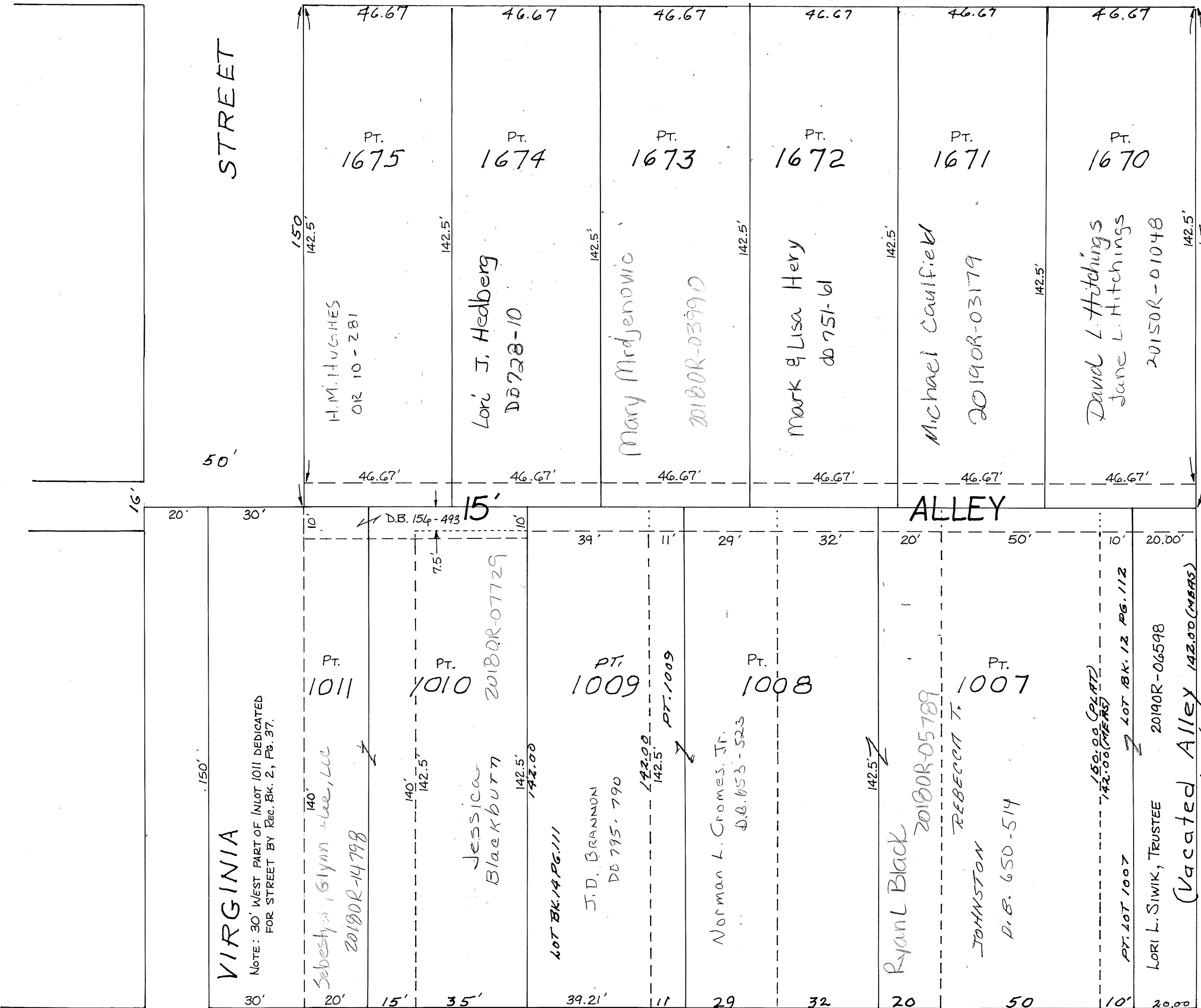
N.W. SECTION

PLAT NO. 31
SCALE 1-INCH=30 FEET

CAMP

60

STREET



INLOTS 1670 THRU 1675
KIEFER'S SECOND SUB.
REC. 2-37

NOTE: 15' ALLEY WAS DEEDED TO THE CITY OF PIQUA BY VARIOUS OWNERS, AS RECORDED IN D.B. 157-172; MOST PARCELS ON THIS MAP OVERLAP THIS CONVEYANCE TO THE CITY. DESCRIPTIONS SHOULD BE MODIFIED ACCORDINGLY. BY DEED RECORDED IN D.B. 156-493, THE CITY OF PIQUA ACQUIRED 10 FEET OFF THE NORTH END OF LOTS 1010 AND 1011. THE DEED FOR THE EASTERN PART OF LOT 1010 ERRONEOUSLY EXCEPTS ONLY 7.5 FEET.

INLOTS 1007 THRU 1011
LINE'S SUB.
REC. 1-63