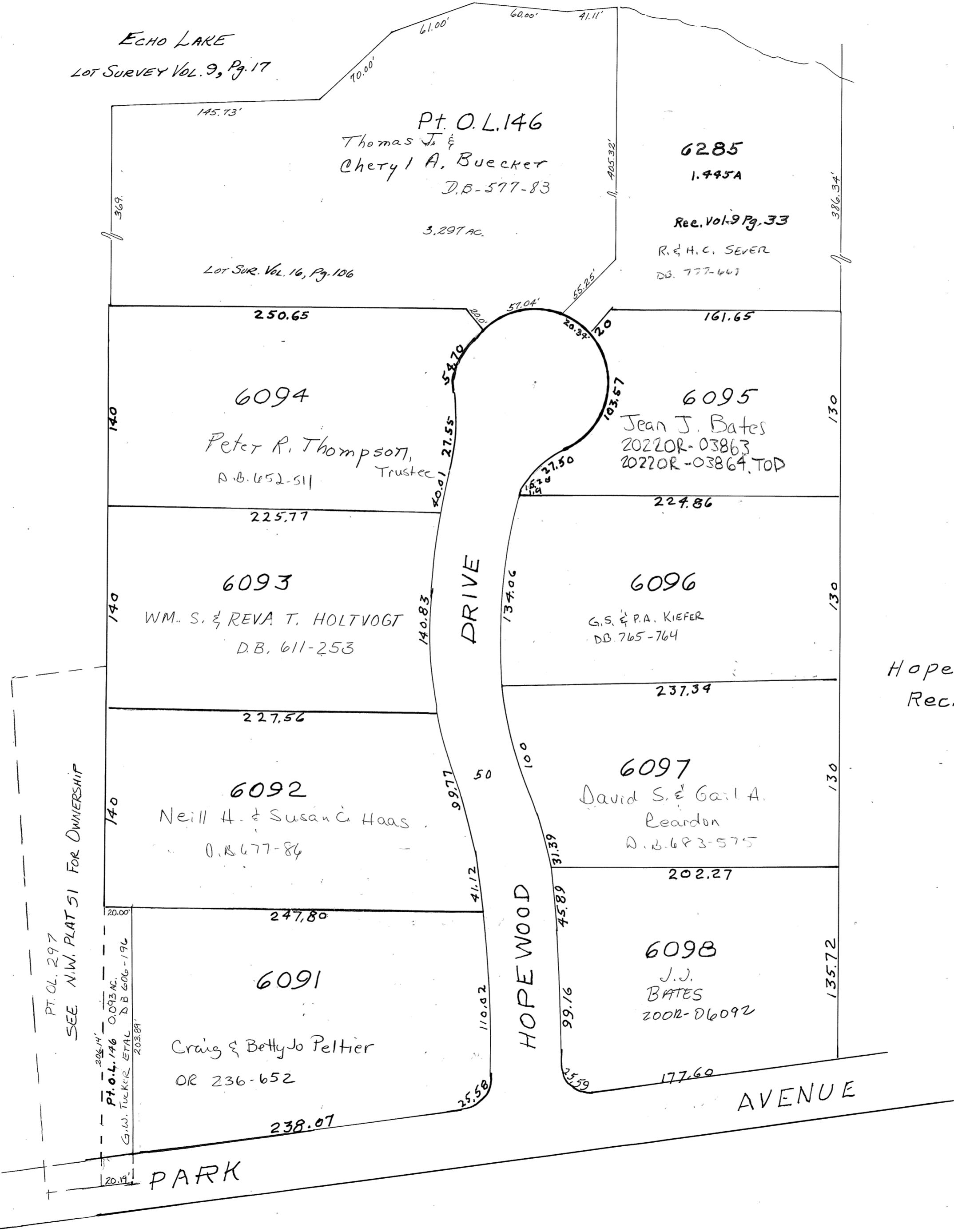


PIQUA Corporation

N.W. SECTION

PLAT NO. 49
SCALE 1-INCH=60 FEET

ECHO LAKE
Lot Survey Vol. 9, Pg. 17



Pt. O.L. 146
Thomas J. &
Cheryl A. Buecker
D.B. 577-83

3.297 ac.

Lot Sur. Vol. 16, Pg. 106

6285
1.995A

Rec. Vol. 9 Pg. 33

R. & H. C. SEVER
DB. 777-667

250.65

6094

Peter R. Thompson,
Trustee
D.B. 652-511

225.77

6093

WM. S. & REVA T. HOLTVOGT
D.B. 611-253

227.56

6092

Neill H. & Susan C. Haas
D.B. 677-84

247.80

6091

Craig & Betty Jo Peltier
OR 236-652

238.07

161.65

6095

Jean J. Bates
2022OR-03863
2022OR-03864, TOD

224.86

6096

G. S. & P. A. KIEFER
DB. 765-764

237.34

6097

David S. & Gail A.
Reardon
D.B. 683-575

202.27

6098

J. J.
BATES
2002-06092

177.60

PT. O.L. 297
SEE N.W. PLAT 51 FOR OWNERSHIP

Pt. O.L. 146
G.W. TUCKER ETAL
D.B. 606-196
203.87

PARK

Hopewood Estates
Rec. Bk 8 Pg. 120

AVENUE