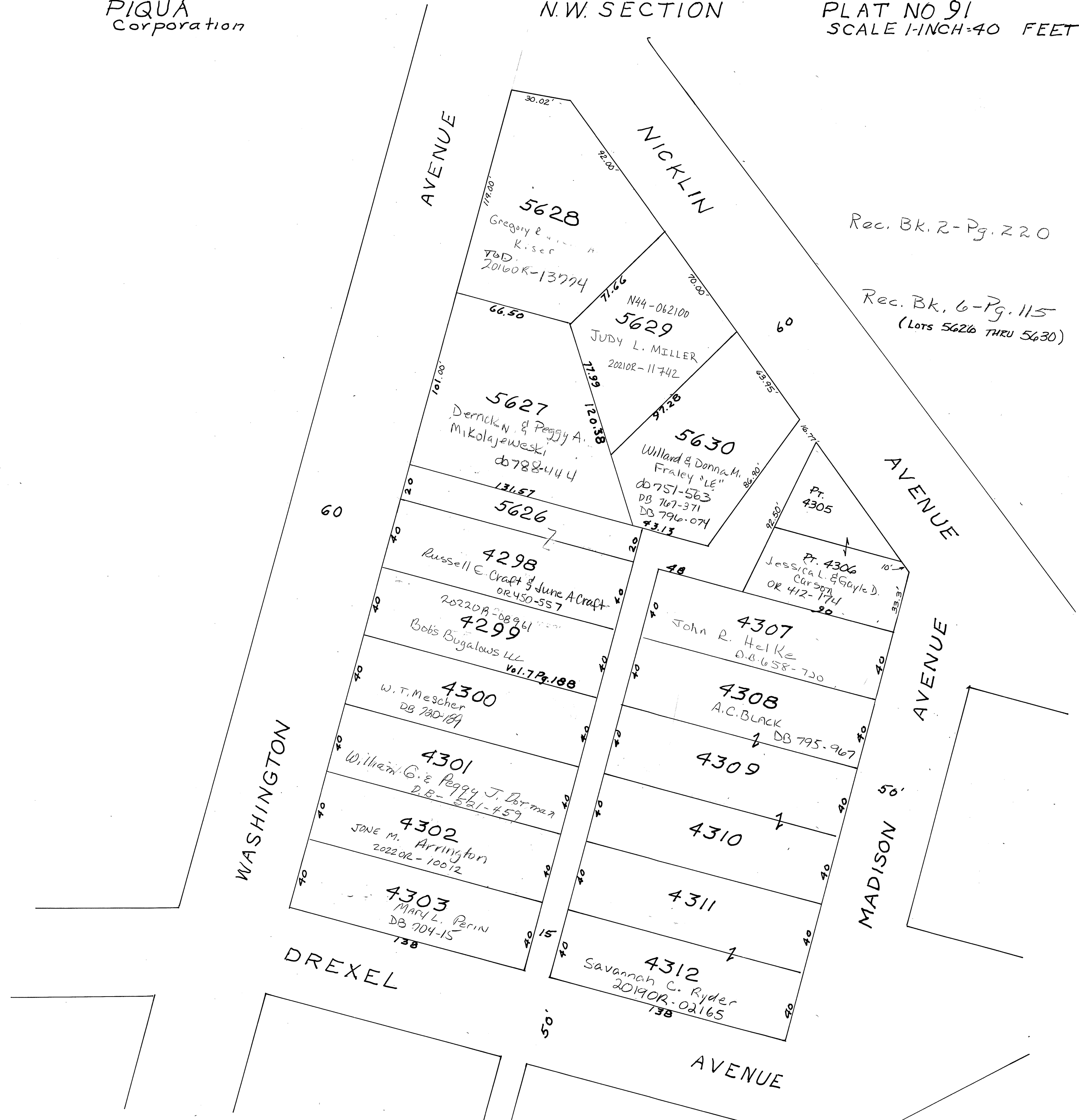


PIQUA Corporation

N.W. SECTION

PLAT NO 91
SCALE 1-INCH=40 FEET



AVENUE

NICKLIN

AVENUE

AVENUE

MADISON

WASHINGTON

DREXEL

AVENUE

Rec. BK. 2-Pg. 220
Rec. BK. 6-Pg. 115
(Lots 5626 THRU 5630)

5628

Gregory E. Kiser
TOD
2016OR-13774

5629

N44-062100
JUDY L. MILLER
2021OR-11742

5627

Derrick W. & Peggy A.
Mikolajewski
db 788-444

5630

Willard & Donna M.
Fraley "LE"
db 751-563
DB 767-371
DB 796-074
#3.13

5626

4298
Russell E. Craft & June A. Craft
OR 450-557

4299

2022OR-08961
Bobs Bugalows LLC
Vol. 7 Pg. 188

4300

W. T. Mescher
DB 780-189

4301

William G. & Peggy J. Dorman
D.B. - 521-459

4302

JONE M. Arrington
2022OR-10012

4303

MARY L. PERIN
DB 704-15

4307

John R. Helke
D.B. 658-720

4308

A.C. BLACK
DB 795-967

4309

4310

4311

4312

Savannah C. Ryder
2019OR-02165

Pt. 4305

Pt. 4306

Jessica L. & Gayle D.
Carson
OR 412-174