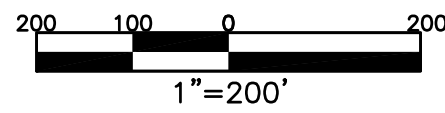


SECTION 13  
TOWN 8  
RANGE 5

CITY OF PIQUA  
MIAMI COUNTY, OHIO

PLAT NW 129



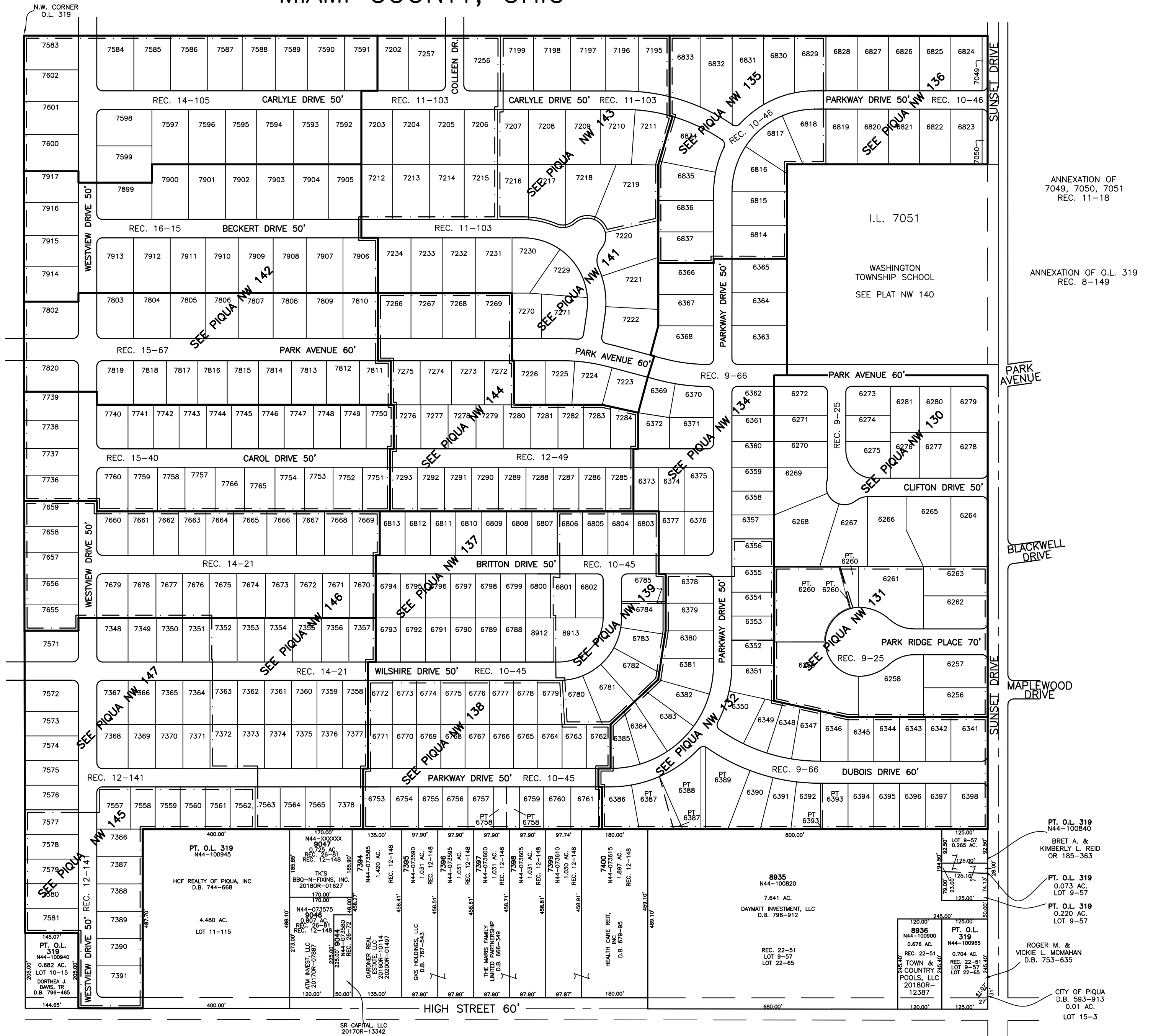
ABBREVIATION LEGEND	
2014OR-07759	= RECORDER'S DOCUMENT NUMBER
OR 406-509	= OFFICIAL RECORD 406 PAGE 509
D.B. 613-172	= DEED BOOK 613, PAGE 172
REC. 15-72	= RECORDER'S PLAT BOOK 15, PAGE 72
LND. 33-15	= LAND SURVEY VOLUME 33, PAGE 15
LOT 19-12	= LOT SURVEY VOLUME 19, PAGE 12
R.R. 8-29	= ROAD RECORD VOLUME 8, PAGE 29
R/W	= RIGHT OF WAY
C	= CENTERLINE
AC.	= ACRES
TWP.	= TOWNSHIP
TR.	= TRACT
IL	= INLOT

LINE LEGEND	
	Blow-up Boundary
	Property Line
	Lot Split Line
	Section Line
	Centerline
	Right-of-Way Line
	Corporation Line

SURVEY INDEX	
REC. 8-149	LOT 9-57
REC. 11-18	LOT 10-15
REC. 12-148	LOT 11-116
REC. 22-51	LOT 15-3
REC. 26-72	LOT 22-65
REC. 26-81	



PREPARED BY: MIAMI COUNTY ENGINEER'S MAP DEPARTMENT  
PAUL P. HUELSKAMP, P.E., P.S., COUNTY ENGINEER  
DATE: MARCH 12, 2014 MB  
REVISED: February 4, 2020 ASMITH

SR CAPITAL, LLC  
2017OR-13342

ANNEXATION OF  
7049, 7050, 7051  
REC. 11-18

ANNEXATION OF O.L. 319  
REC. 8-149

BLACKWELL DRIVE

MAPLEWOOD DRIVE

PT. O.L. 319  
N44-100840  
BRET A. &  
KIMBERLY L. REID  
OR 185-363  
PT. O.L. 319  
N44-100940  
LOT 9-57  
0.265 AC.  
PT. O.L. 319  
N44-100840  
LOT 9-57  
0.073 AC.  
PT. O.L. 319  
N44-100965  
LOT 9-57  
0.220 AC.

ROGER M. &  
VICKIE L. MCMAHAN  
D.B. 753-635

CITY OF PIQUA  
D.B. 593-913  
0.01 AC.  
LOT 15-3