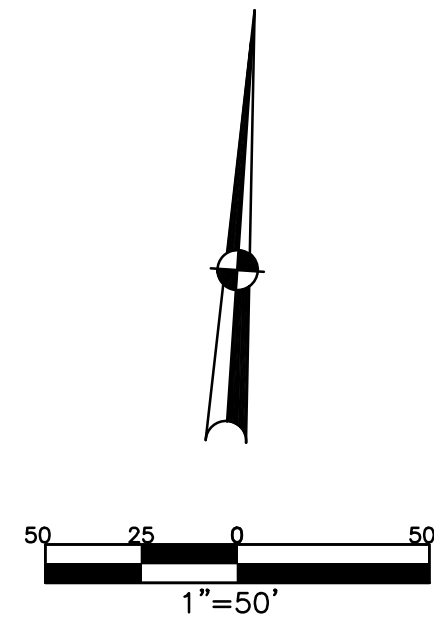


SECTION 13
TOWN 8
RANGE 5

CITY OF PIQUA
MIAMI COUNTY, OHIO

PARCEL ID NUMBER
N44-_____

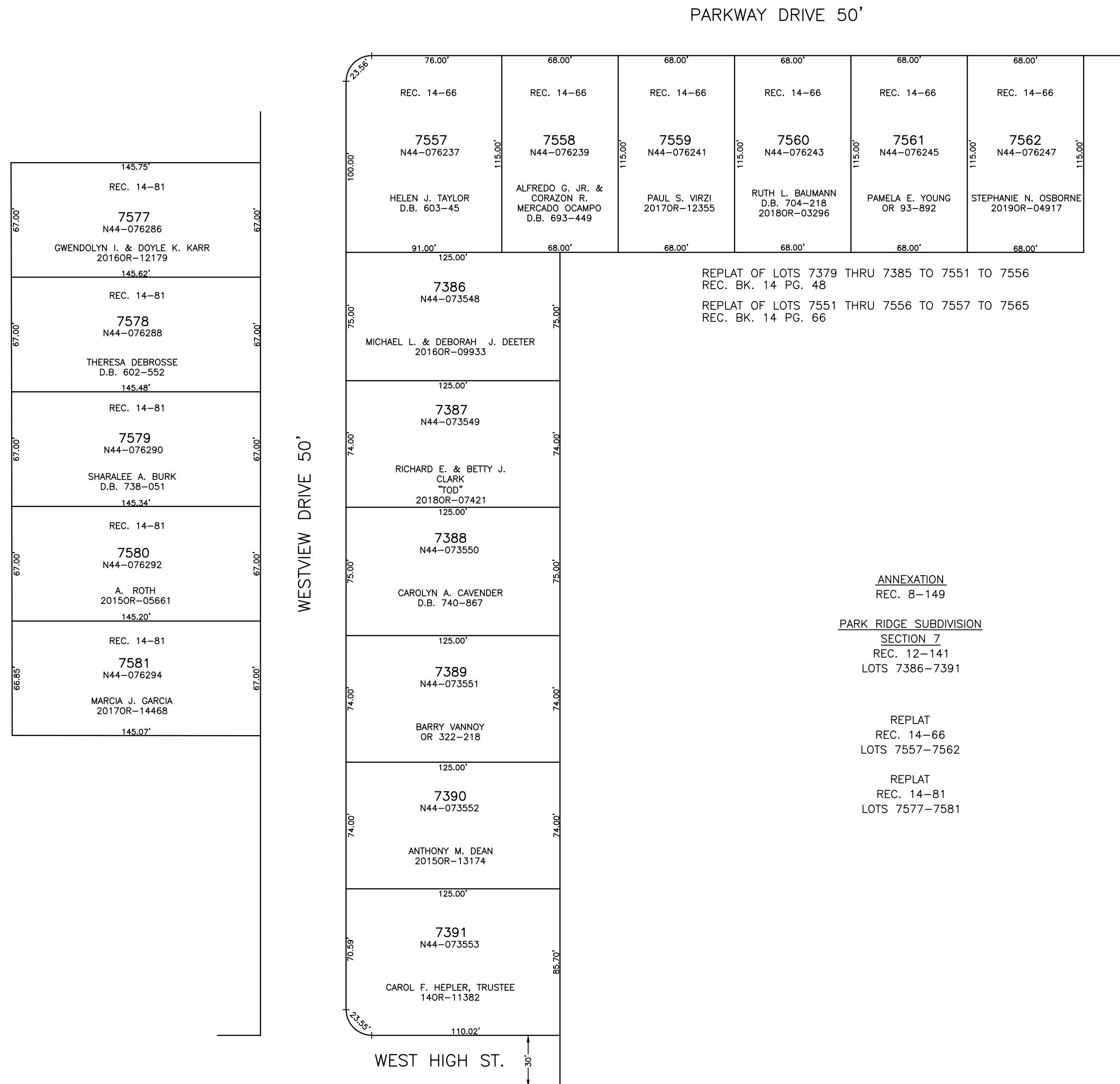
PLAT NW 145



ABBREVIATION LEGEND	
2014OR-07759	= RECORDER'S DOCUMENT NUMBER
OR 406-509	= OFFICIAL RECORD 406 PAGE 509
D.B. 613-172	= DEED BOOK 613, PAGE 172
REC. 15-72	= RECORDER'S PLAT BOOK 15, PAGE 72
LND. 33-15	= LAND SURVEY VOLUME 33, PAGE 15
LOT 19-12	= LOT SURVEY VOLUME 19, PAGE 12
R.R. 8-29	= ROAD RECORD VOLUME 8, PAGE 29
R/W	= RIGHT OF WAY
CL	= CENTERLINE
AC.	= ACRES
TWP.	= TOWNSHIP
TR.	= TRACT
IL	= INLOT

LINE LEGEND	
	Blow-up Boundary
	Property Line
	Lot Split Line
	Section Line
	Centerline
	Right-of-Way Line
	Corporation Line

SURVEY INDEX		
REC. 8-149		
REC. 12-141		
REC. 14-48		
REC. 14-66		
REC. 14-81		



PARKWAY DRIVE 50'

WESTVIEW DRIVE 50'

WEST HIGH ST.

REPLAT OF LOTS 7379 THRU 7385 TO 7551 TO 7556
REC. BK. 14 PG. 48
REPLAT OF LOTS 7551 THRU 7556 TO 7557 TO 7565
REC. BK. 14 PG. 66

ANNEXATION
REC. 8-149
PARK RIDGE SUBDIVISION
SECTION 7
REC. 12-141
LOTS 7386-7391

REPLAT
REC. 14-66
LOTS 7557-7562

REPLAT
REC. 14-81
LOTS 7577-7581