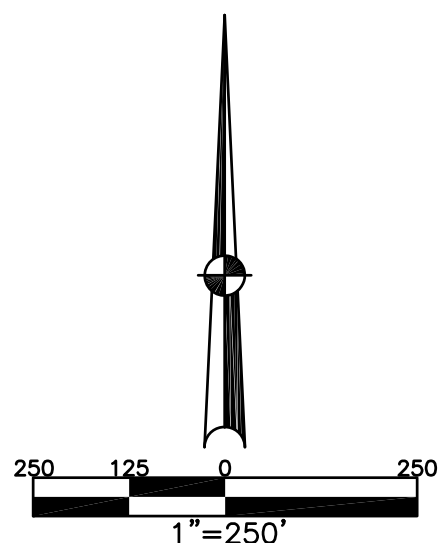


SECTION 14, 11
TOWN 8
RANGE 5

CITY OF PIQUA
MIAMI COUNTY, OHIO

SMDA NUMBER
N44-NW150-_-_-_-

PLAT NW 150



ANNEXATIONS:
LOT 6153
REC. 8-149
LOTS 7680-7682
REC. 14-134
LOT 8137
REC. 17-137

9063
22.724 ACRES
REC. 27-21
REC. 17-137
LND. 37-66
LOT 18-138
LOT 22-111

CRAYCON HOMES, INC.
D.B. 670-511
D.B. 685-642
D.B. 688-127

ABBREVIATION LEGEND

D.B. 613-172 = DEED BOOK 613, PAGE 172
REC. 15-72 = RECORDER'S PLAT BOOK 15, PAGE 72
LND. 33-15 = LAND SURVEY VOLUME 33, PAGE 15
LOT 19-12 = LOT SURVEY VOLUME 19, PAGE 12
R.R. 8-29 = ROAD RECORD VOLUME 8, PAGE 29
R/W = RIGHT OF WAY
C = CENTERLINE
AC. = ACRES
TWP. = TOWNSHIP
TR. = TRACT
② = LOT CREATED BY RECORDER'S PLAT

LINE LEGEND

———— Blow-up Boundary
———— Property Line
..... Lot Split Line
———— Section Line
———— Centerline
———— Right-of-Way Line
////// Corporation Line

SURVEY INDEX

LOT 18-138	REC. 8-149	REC. 28-22
LOT 20-102	(ANNEXATION)	
LOT 21-82	REC. 14-134	
LOT 21-111	(ANNEXATION)	
LOT 21-136	REC. 15-38	
LOT 22-61	REC. 16-128	
LOT 22-111	REC. 17-97	
LOT 23-32	REC. 17-136	
LOT 23-199	REC. 17-137	
LOT 24-143	(ANNEXATION)	
LOT 24-172	REC. 18-60	
LND 57-136	REC. 18-120	
LND 58-188	REC. 19-107	
	REC. 20-62, 62A	
	REC. 20-117, 117A	
	REC. 20-122	
	REC. 21-72, 72A	
	REC. 21-21	
	REC. 27-45	CONDO BOOK 1-52

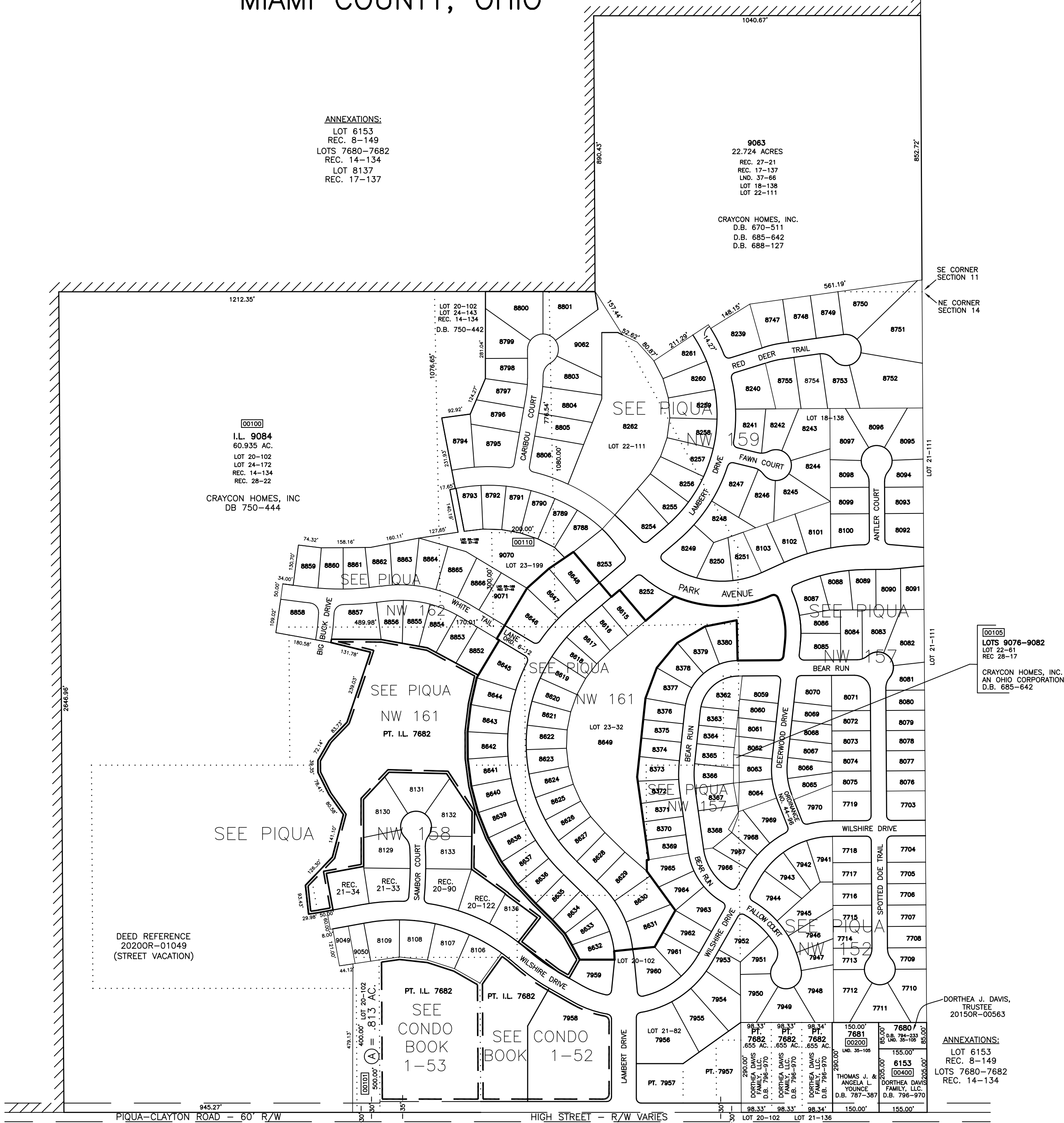
OWNERSHIP/ACREAGE LEGEND

(A) = .813 AC. } TOTAL = 0.871 AC.
 } CRAYCON HOMES, INC.
 } D.B. 652-556
(C) = .014 AC. } D.B. 677-303
(D) = .044 AC. }

(F) = .010 AC. } CRAYCON HOMES, INC.
(G) = .7985 AC. } D.B. 700-53

(L) + (M) = } CRAYCON HOMES, INC.
 } D.B. 664-588
 } 4.9836 AC. } D.B. 677-303

PREPARED BY: MIAMI COUNTY ENGINEER'S MAP DEPARTMENT
PAUL P. HUELSKAMP, P.E., P.S., COUNTY ENGINEER
DATE: OCTOBER 15, 1996
REVISED: April 15, 2020 SSHORT



SE CORNER SECTION 11
NE CORNER SECTION 14

00105
LOTS 9076-9082
LOT 22-61
REC 28-17

CRAYCON HOMES, INC.
AN OHIO CORPORATION
D.B. 685-642

DORTHEA J. DAVIS,
TRUSTEE
2015OR-00563

ANNEXATIONS:
LOT 6153
REC. 8-149
LOTS 7680-7682
REC. 14-134

PIQUA-CLAYTON ROAD - 60' R/W

HIGH STREET - R/W VARIES

LOT 20-102 LOT 21-136