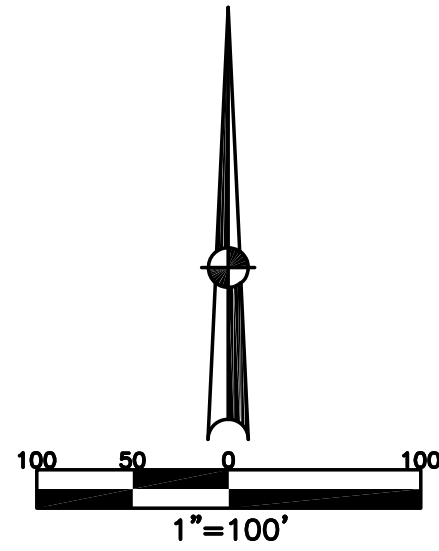


SECTION 14
TOWN 8
RANGE 5



ABBREVIATION LEGEND		
2014OR-07759	=	RECORDER'S DOCUMENT NUMBER
OR 57-436	=	OFFICIAL RECORD 57 PAGE 436
D.B. 613-172	=	DEED BOOK 613, PAGE 172
REC. 15-72	=	RECORDER'S PLAT BOOK 15, PAGE 72
LND. 33-15	=	LAND SURVEY VOLUME 33, PAGE 15
LOT 19-12	=	LOT SURVEY VOLUME 19, PAGE 12
R.R. 8-29	=	ROAD RECORD VOLUME 8, PAGE 29
R/W	=	RIGHT OF WAY
C	=	CENTERLINE
AC.	=	ACRES
TWP.	=	TOWNSHIP
TR.	=	TRACT
IL	=	INLOT

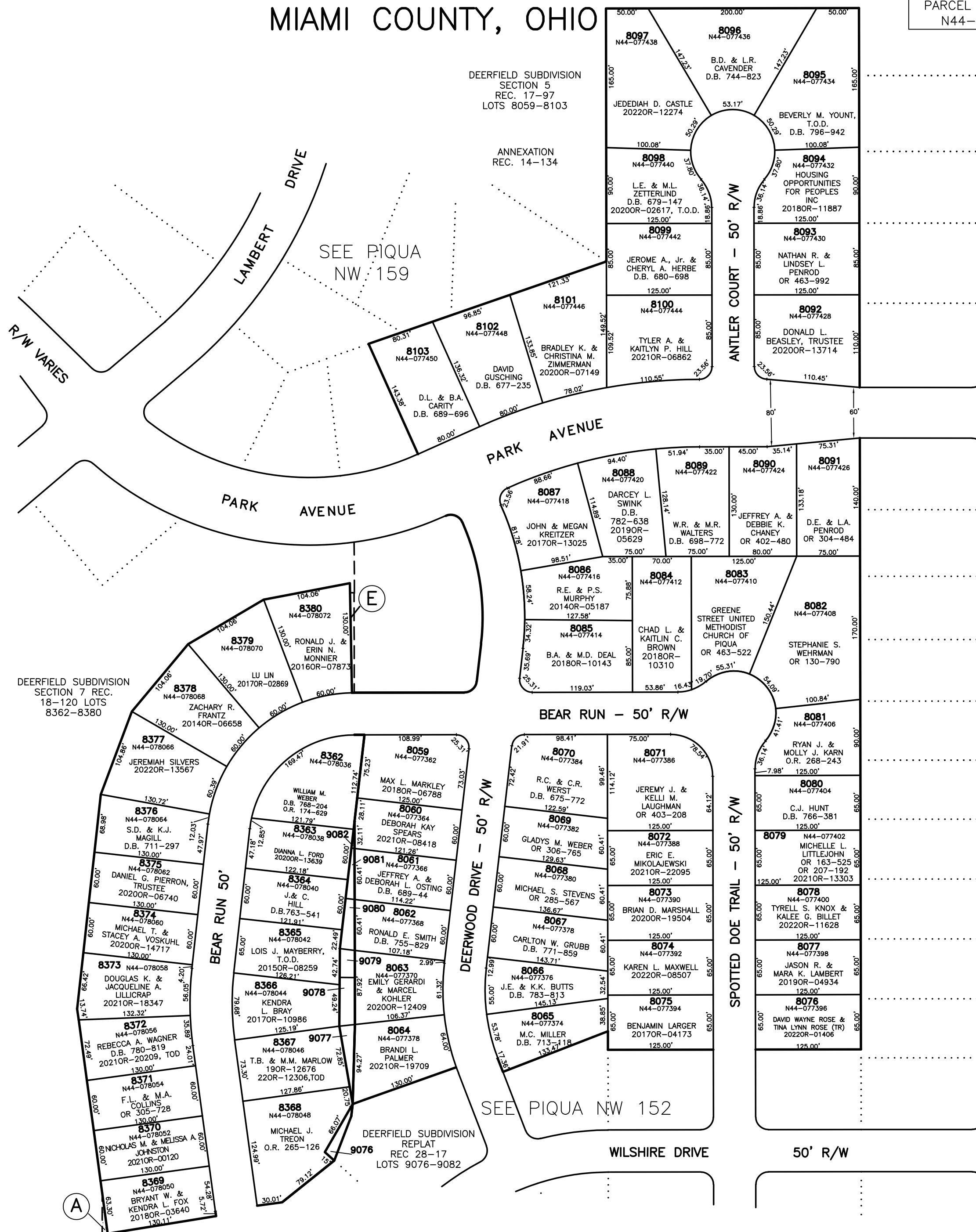
LINE LEGEND		
	=	Blow-up Boundary
	=	Property Line
	=	Lot Split Line
	=	Section Line
	=	Centerline
	=	Right-of-Way Line
	=	Corporation Line

SURVEY INDEX		
	LOT 21-111	REC. 14-134 REC. 17-97 REC. 18-120

A&E & 9077-9082 OWNERS CAN BE FOUND ON PIQUA N.W. 150

PREPARED BY: MIAMI COUNTY ENGINEER'S MAP DEPARTMENT
PAUL P. HUELSKAMP, COUNTY ENGINEER
DATE: OCTOBER 15, 1996
REVISED: September 15, 2022 APALMER

CITY OF PIQUA MIAMI COUNTY, OHIO



PARCEL ID NUMBER
N44-_____ PLAT NW 157

BECKERT DRIVE - 50' R/W

SEE PIQUA NW 142

PARK AVENUE - 50' R/W

SEE PIQUA NW 142

CAROL DRIVE - 50' R/W

WESTVIEW DRIVE - 50' R/W

BRITTON DRIVE - 50' R/W

SEE PIQUA NW 146

WILSHIRE DRIVE - 50' R/W

SEE PIQUA NW 147