

Vol. 16 Pg. 104 N.W. Pt. S.W.
 Rec'd 10/18/14 N.W. Pt. S.W. (Pt. 306)
 Vol. 17 Pg. 72 W.S. Side S.W.

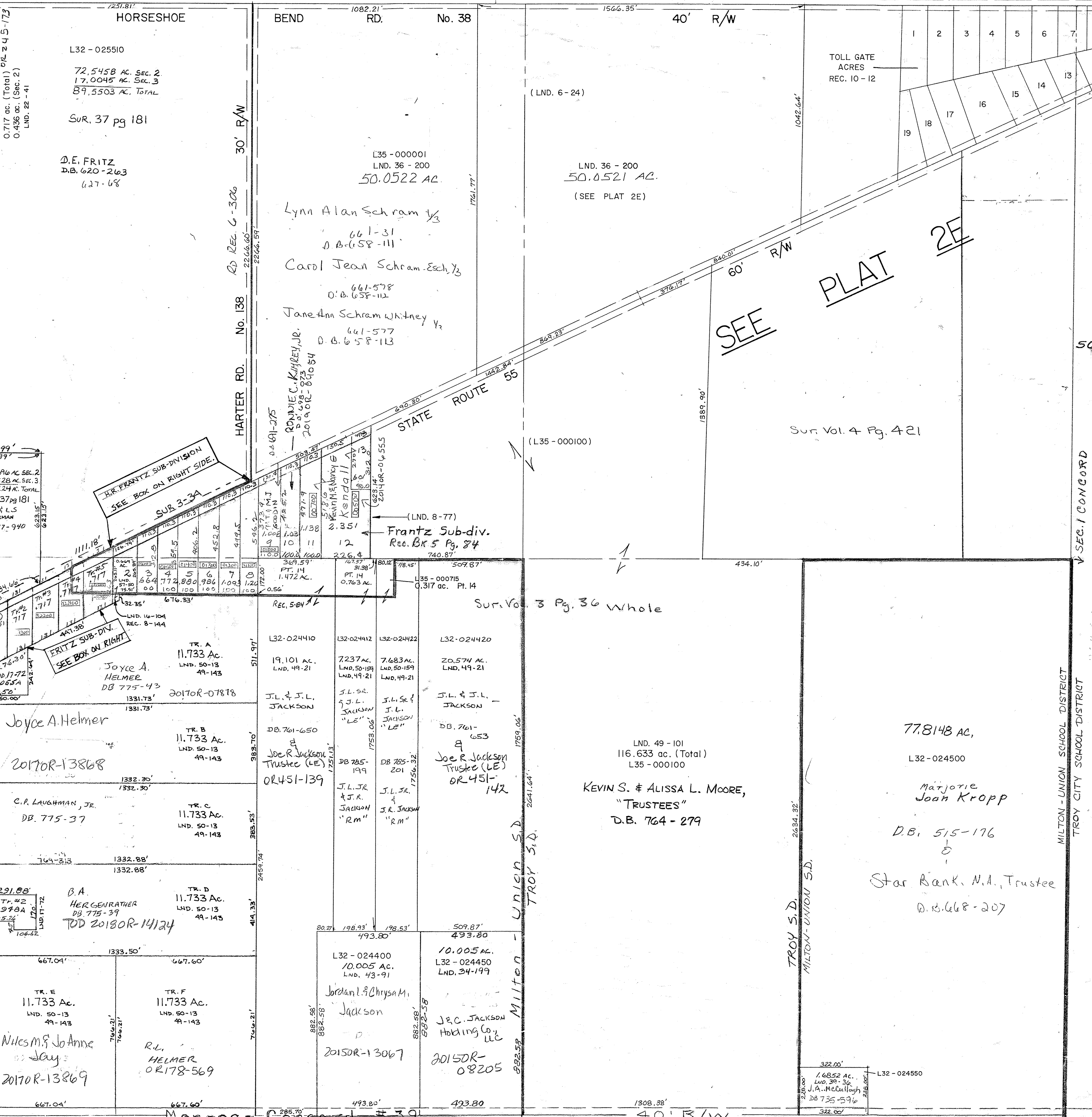
Vol. 8 - 77 CEN. WIDE
 Vol. 9 - 107
 Vol. 10 - 142 NE COR. NE
 Vol. 3 - 226
 Vol. 3 - 277

BEATRICE ANNE
 HERGENRATHER
 D.B. 522-866
 LND. 17-72
 TOD 20180R-14125

REC. 13-54
 13-54A
 13-56

REC. 13-54
 13-54A
 13-56

REC. 13-54
 13-54A
 13-56



L32-025510
 72.5458 AC. SEC. 2
 17.0045 AC. SEC. 3
 89.5503 AC. TOTAL
 SUR. 37 pg 181
 D.E. FRITZ
 D.B. 620-263
 627-68

L35-000001
 LND. 36 - 200
 50.0522 AC.
 Lynn Alan Schram 1/3
 661-31
 D.B. 658-111
 Carol Jean Schram Esch 1/3
 661-578
 D.B. 658-112
 Jane Ann Schram Whitney 1/3
 661-577
 D.B. 658-113

4.8696 AC. SEC. 2
 7.3528 AC. SEC. 3
 12.2224 AC. TOTAL
 SUR. 37 pg 181
 C.R. & L.S.
 FINNERMAN
 OR 87-940

Joyce A. Helmer
 DB 775-43
 1331.73'
 1331.73'
 20170R-07878

TR. E
 11.733 Ac.
 LND. 50-13
 49-143
 Niles M. & Jo Anne
 as Jay
 20170R-13869

TR. F
 11.733 Ac.
 LND. 50-13
 49-143
 R.L.
 HELMER
 OR 178-569

RD REC. 6-306
 2266.60'
 2266.59'

HARTER RD. No. 138
 0.4 611-275
 RONNIE C. KIMBLE, JR.
 D.B. 698-873
 20190R-81054

FRITZ SUB-DIV.
 SEE BOX ON RIGHT

J.L. & J.L. JACKSON
 DB. 761-650
 Joe R. Jackson
 Trustee (LE)
 OR 451-139

Jordan L. & Chrysa M.
 Jackson
 20150R-13067

J.C. JACKSON
 Holding Co., LLC
 20150R-08205

LND. 6-24)

LND. 36 - 200
 50.0521 AC.
 (SEE PLAT 2E)

(LND. 8-77)
 Frantz Sub-div.
 Rec. Bk 5 Pg. 84

LND. 49 - 101
 116.633 ac. (Total)
 L35 - 000100
 KEVIN S. & ALISSA L. MOORE,
 "TRUSTEES"
 D.B. 764 - 279

L32-024400
 10.005 AC.
 LND. 43-91
 Jordan L. & Chrysa M.
 Jackson
 20150R-13067

L32-024450
 10.005 AC.
 LND. 34-199
 J.C. JACKSON
 Holding Co., LLC
 20150R-08205

SEE PLAT 2E

SEE PLAT 2E

SEE PLAT 2E

SEE PLAT 2E

SEE PLAT 2E

SEE PLAT 2E

TOLL GATE ACRES
 REC. 10 - 12

SEE PLAT 2E

SEE PLAT 2E

SEE PLAT 2E

SEE PLAT 2E

SEE PLAT 2E

SEE CONCORD SEC. 1

SEE CONCORD SEC. 1

SEE CONCORD SEC. 1

SEE CONCORD SEC. 1

SEE CONCORD SEC. 1

SEE CONCORD SEC. 1

L32 - UN0002 -
 SMDA NUMBER

SCALE - 1" = 330'

SEE CONCORD SEC. 1

SEE CONCORD SEC. 1

SEE CONCORD SEC. 1

SEE CONCORD SEC. 1

1	2	3	4	5	6	7	8
9	10	11	12	13	14	15	16
17	18	19	20	21	22	23	24

1	2	3	4	5	6	7
8	9	10	11	12	13	14

H.R. FRANTZ SUB-DIVISION REC. 5-84	
1	SEE LOT 5-45 FRITZ REC. 8-144
2	THOMAS E. & JOAN GIBSON, TRUSTEE
3	SEE MAP
4	SEE MAP
5	SEE MAP
6	SEE MAP
7	SEE MAP

FRITZ SUB-DIV. REC. 8-144	
1	J.A. HELMER 20170R-08205
2	DEAN C. & CAROLYN S. JACKSON D.B. 656-107
3	MICHAELA LORENZO 20190R-00095
4	ROBERT F. ANDRETTI, FINE ROCK D.B. 497-29
5	Ryan T Moore & Ashlee Myan 20150R-10240

REVISD: 3/23/16
 AM