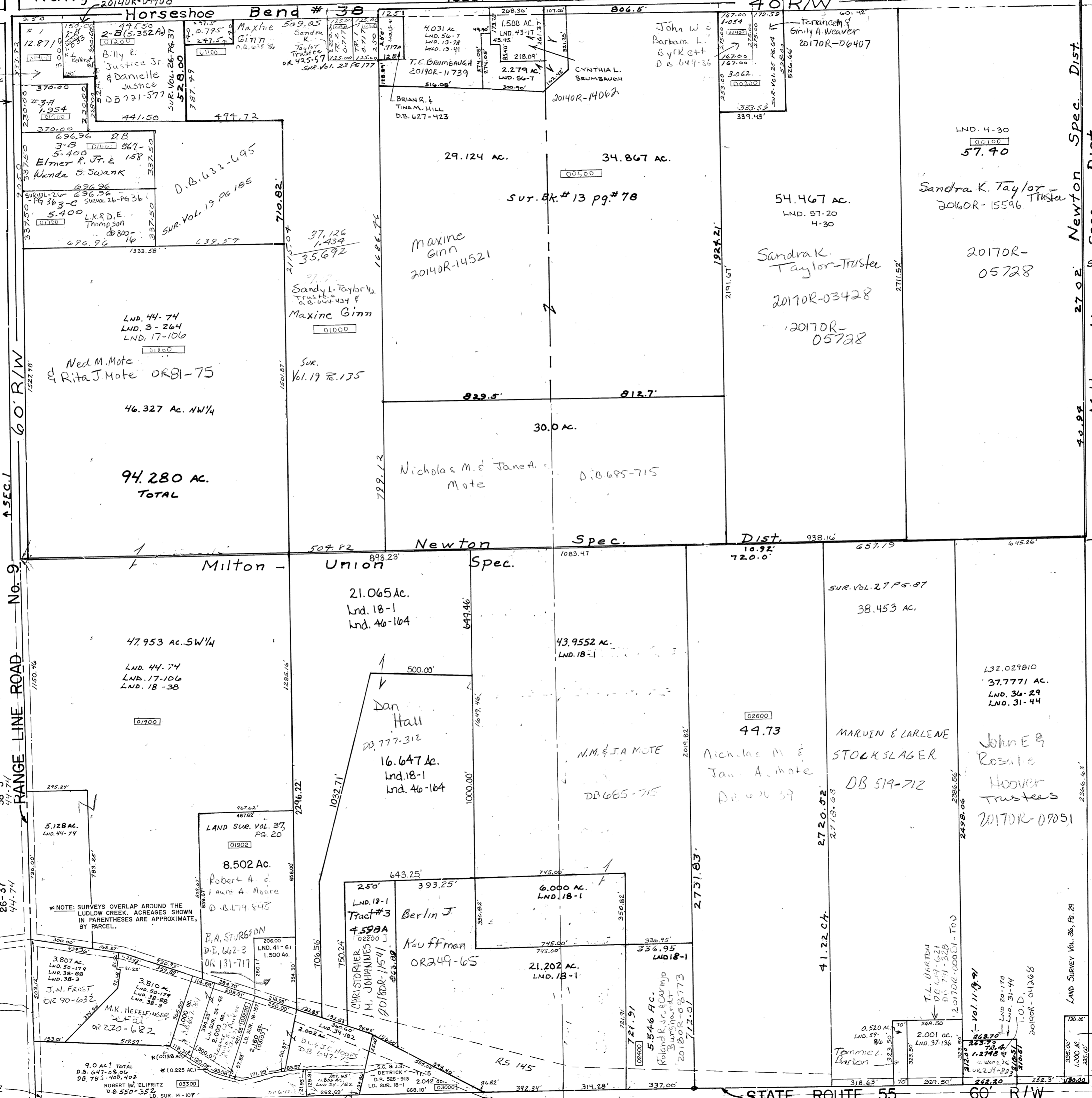


- SE Quarter: 11-41, 18-1, 20-170, 27-87, 31-44, 36-29, 37-136, 40-164
- NE Quarter: 4-30, 13-78, 25-64
- SW Quarter: 14-107, 17-106, 18-1, 18-157, 24-43, 34-182, 37-20, 38-3, 44-74
- NW Quarter: 3-264, 13-41, 13-78, 19-135, 19-185, 23-177, 26-36, 26-37, 44-74



Newton Spec. Dist.  
Milton - Union Spec. Dist.

SCALE - 1" = 3'



SMDA NUMBER  
L33-UN001

SMDA NUMBER  
L32-UN006

REVISED

\* NOTE: SURVEYS OVERLAP AROUND THE LUDLOW CREEK. ACRESAGES SHOWN IN PARENTHESES ARE APPROXIMATE, BY PARCEL.

SEE PLAT 7

STATE ROUTE 55