

State Route #55

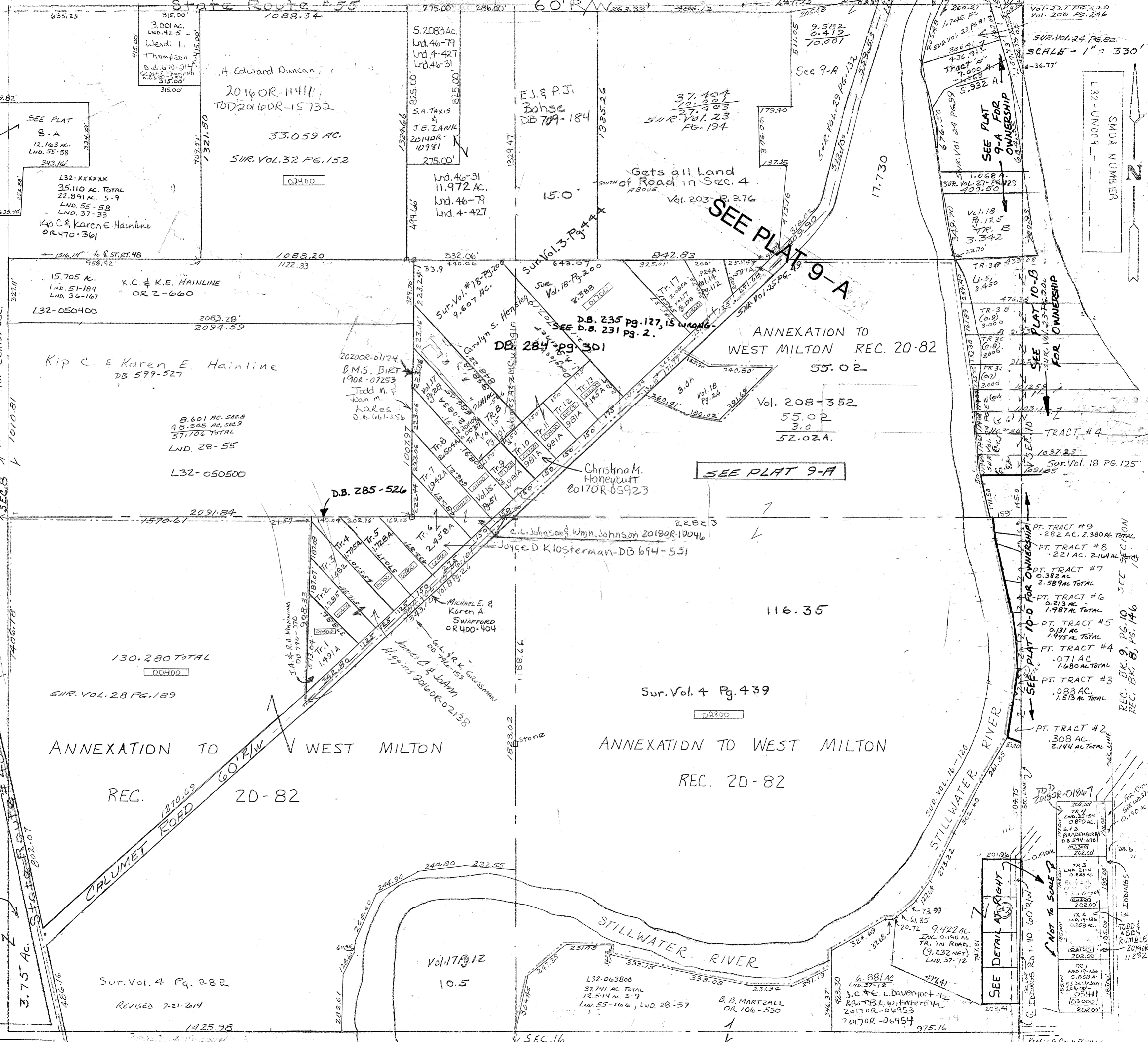
60' R/W 263.33'

Vol. 16 Pg. 11 S.E. Cor. N.E.  
Rec. Vol. 9 Pg. 10 Replat of Stillwater River Subd.  
Vol. 17 Pg. 28 S.E. Cor. N.W.  
Vol. 17 Pg. 198 Cen. Pt. N.E.  
Vol. 18 Pg. 26 S. Cen. Pt. N.E.  
Vol. 18 Pg. 125 N.E. Pt. N.E.  
Vol. 46-79 NE Pt. NW Qtr.  
Vol. 46-79 NE Pt. NW Qtr.  
Vol. 46-79 NE Pt. NW Qtr.  
Vol. 46-79 NE Pt. NW Qtr.

Vol. 4 Pg. 439 N P+S E  
Vol. 8 Pg. 26 N.E. P+S W  
Vol. 14 Pg. 112 Cen. Pt. N.E.  
Vol. 15 Pg. 57 N.E. Cor. S.W. & S.E. Cor. N.W. Lnd. 46-79 NE Pt. NW Qtr.  
Vol. 15 Pg. 101 Cen. of Sec.

Surveys +  
N 1/2 Sec - Vol. 3 Pg. 444  
NE 1/4 NW - Vol. 4 Pg. 247  
SP 4 SW - Vol. 4 Pg. 282  
Car Stone Ref - Vol. 4 Pg. 395

D.B. 530-241  
ROBERT F. BUSSE  
Carolyn B. Busse Trustee  
D.B. 661-11, 118



SEE PLAT 8-A  
12.163 AC.  
LND. 55-58  
343.16'

L32-XXXXXX  
35.110 AC. TOTAL  
22.891 AC. S-9  
LND. 55-58  
LND. 37-39  
Kip C & Karen E Hainline  
OR 470-361

15.705 AC.  
LND. 51-184  
LND. 36-167  
L32-050400  
K.C. & K.E. HAINLINE  
OR 2-660

Kip C. & Karen E. Hainline  
DB 599-527  
8.601 AC. SEC. 8  
48.505 AC. SEC. 9  
57.106 TOTAL  
LND. 28-55  
L32-050500

130.280 TOTAL  
00400  
SUR. VOL. 28 PG. 189

ANNEXATION TO WEST MILTON  
REC. 20-82

Sur. Vol. 4 Pg. 282  
REVISED 7-21-2014  
1425.98

H. Edward Duncan  
2016OR-11411  
TOD 2016OR-15732  
33.059 AC.  
SUR. VOL. 32 PG. 152  
02400

Lnd. 46-31  
11.972 AC.  
Lnd. 46-79  
Lnd. 4-427

SUR. Vol. #18 Pg. 200  
9.607 AC.  
DB 284 PG 301

DB. 285-526  
Joyce D. Klosterman-DB 694-551

Sur. Vol. 4 Pg. 439  
02800

Vol. 17 Pg. 12  
10.5

E.J. & P.J. Bohse  
DB 709-184

SUR. Vol. 3 Pg. 444

DB. 235 PG. 127, 15 WRONG.  
SEE D.B. 231 PG. 2.

Christina M. Honeycutt  
2017OR-05923

Sur. Vol. 4 Pg. 439  
02800

L32-063800  
37.741 AC. TOTAL  
12.544 AC. S-9  
LND. 55-166, LND. 28-57  
B.B. MARTZALL  
OR 106-530

37.404  
10.201  
27.403  
SUR. Vol. 23  
Pg. 194

Gets all land  
of Road in Sec. 4  
ABOVE  
Vol. 203- R. 276

ANNEXATION TO  
WEST MILTON REC. 20-82  
55.02

Sur. Vol. 4 Pg. 439  
02800

L32-063800  
37.741 AC. TOTAL  
12.544 AC. S-9  
LND. 55-166, LND. 28-57  
B.B. MARTZALL  
OR 106-530

9.582  
0.475  
10.001

SEE PLAT 9-A

ANNEXATION TO  
WEST MILTON REC. 20-82  
55.02

Sur. Vol. 4 Pg. 439  
02800

6.881 AC  
LND. 37-12  
J.C. & E.L. Davenport  
R/L + B.L. Winters  
2017OR-04953  
2017OR-06954

17.730

SEE PLAT 9-A

ANNEXATION TO  
WEST MILTON REC. 20-82  
55.02

Sur. Vol. 4 Pg. 439  
02800

6.881 AC  
LND. 37-12  
J.C. & E.L. Davenport  
R/L + B.L. Winters  
2017OR-04953  
2017OR-06954

SEE PLAT 9-A FOR OWNERSHIP

SEE PLAT 10-B FOR OWNERSHIP

SEE PLAT 10-D FOR OWNERSHIP

SEE PLAT 10-D FOR OWNERSHIP

SEE PLAT 10-D FOR OWNERSHIP

SMDA NUMBER  
L32-UN009

REC. BK. 9 PG. 10  
REC. BK. 8 PG. 146  
SEE SECTION

SEE DETAIL AT RIGHT  
SEE DETAIL AT RIGHT  
SEE DETAIL AT RIGHT

SEE DETAIL AT RIGHT  
SEE DETAIL AT RIGHT  
SEE DETAIL AT RIGHT