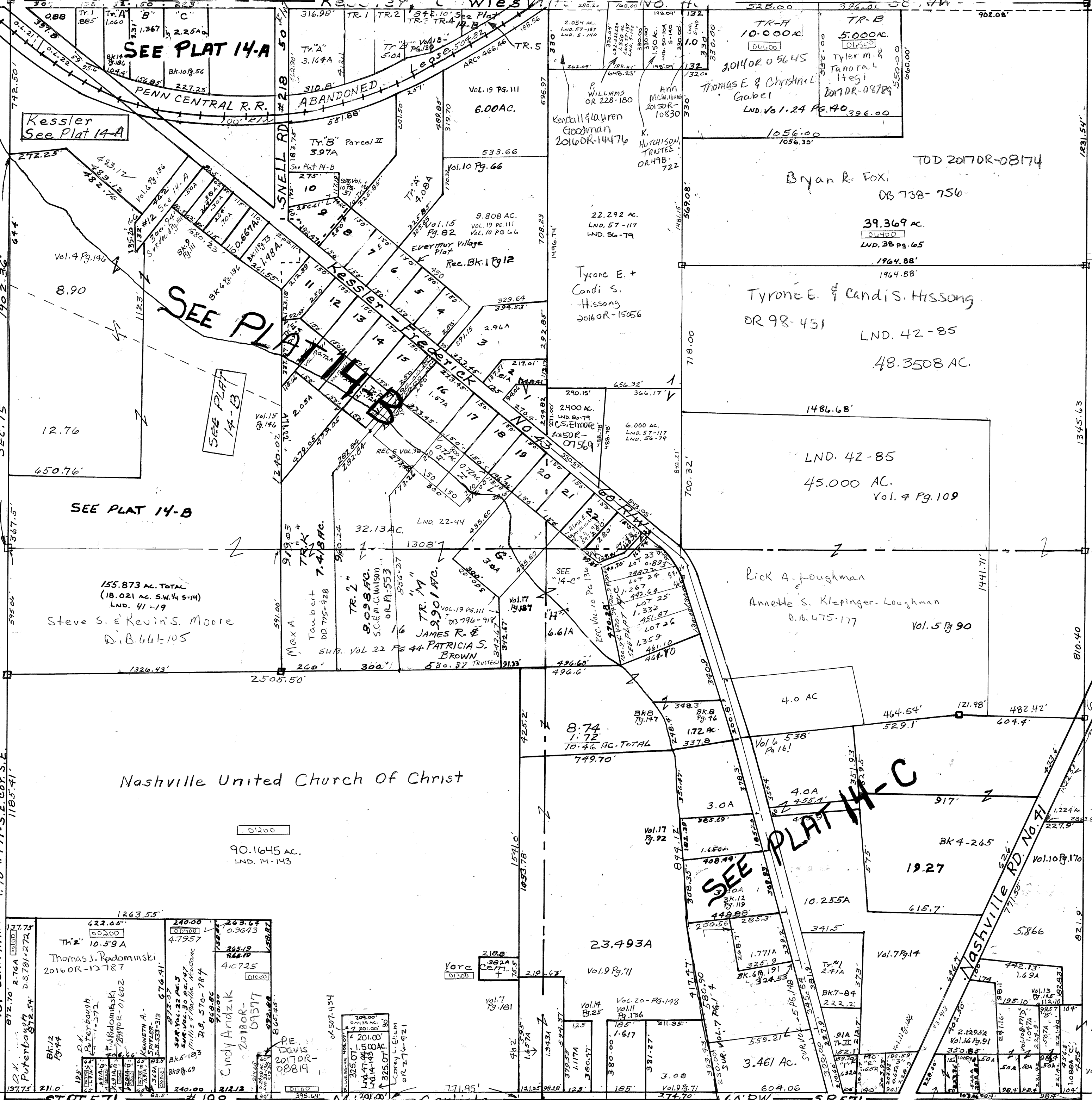


- Vol. 4 Pg. 109-N.L. E 1/2
- Vol. 4 " 146-W.Pt. W 1/2
- Vol. 4 " 265-S.E. Pt. S.E.
- Vol. 4 " 298-Cen. Pt. N.W.
- Vol. 5 " 90-N.E. Pt. S.E.
- Vol. 5 " 140-N.W. Pt. S.W.
- Vol. 5 " 183-S.Cen. Pt. S.W.
- Vol. 6 " 136-C. Pt. N.W.
- Vol. 7 " 164-S.Cen. Pt. S.E.
- Vol. 7 " 181-S.Cen. Pt. S.E.
- Vol. 8 " 46-Cen. Pt. S.E.
- Vol. 8 " 147-Cen. Pt. S.E.
- Vol. 8 " 181-Cen. Pt. N.W.
- Vol. 9 Pg. 69-S.W. Pt. S.W.
- Vol. 9 " 9 " 71-S.W. Pt. S.W.
- Vol. 9 " 9 " 111-Cen. Pt. N.W.
- Vol. 9 " 9 " 148-S.E. Pt. S.E.
- Vol. 7 " 6 " 191-W.Cen. Pt. S.E.
- Vol. 7 " 7 " 14-S.E. Pt. S.E.
- Vol. 8 " 8 " 14-N.W. cor. N.W.
- Vol. 10 " 10 " 571-Pt. N.W. Tri.
- Vol. 10 " 10 " 56-N.W. cor. N.W.
- Vol. 10 " 10 " 66-N.E. Pt. N.W.
- Vol. 10 " 10 " 170-E.Cen. Pt. S.E.
- Vol. 10 " 10 " 171-S.E. cor. S.E.
- Vol. 10 Pg. 173-S.E. cor. S.E.
- Vol. 10 " 11 " 73-Cen. Pt. N.W.
- Vol. 10 " 11 " 136-S.W. Pt. S.E.
- Vol. 10 " 11 " 156-S.Cen. Pt. S.E.
- Vol. 10 " 12 " 44-S.W. Pt. S.W.
- Vol. 10 " 12 " 119-Cen. Pt. S.E.
- Vol. 10 " 13 " 125-S.E. Pt. S.E.
- Vol. 10 " 14 " 143-Cen. Pt. S.W.
- Vol. 10 " 14 " 186-N.W. cor. N.W.
- Vol. 10 " 14 " 25-S.W. Pt. S.E.
- Vol. 10 " 15 " 82-Pt. N.W.
- Vol. 10 " 15 " 146-S.Cen. Pt. N.W.
- Vol. 11 Pg. 92-Cen. Pt. S.E.
- Vol. 11 Pg. 25-S.E. Pt. S.E.
- Vol. 11 Pg. 130-N.Pt. N.W.
- Vol. 11 Pg. 170-SECOR 5E
- Und. 47-94 SE Pt. SW QTR.



SMIDA NUMBER
L32-UN014



SCALE = 1" = 330'

REVISED: 9-26-2017
D. VENTURA