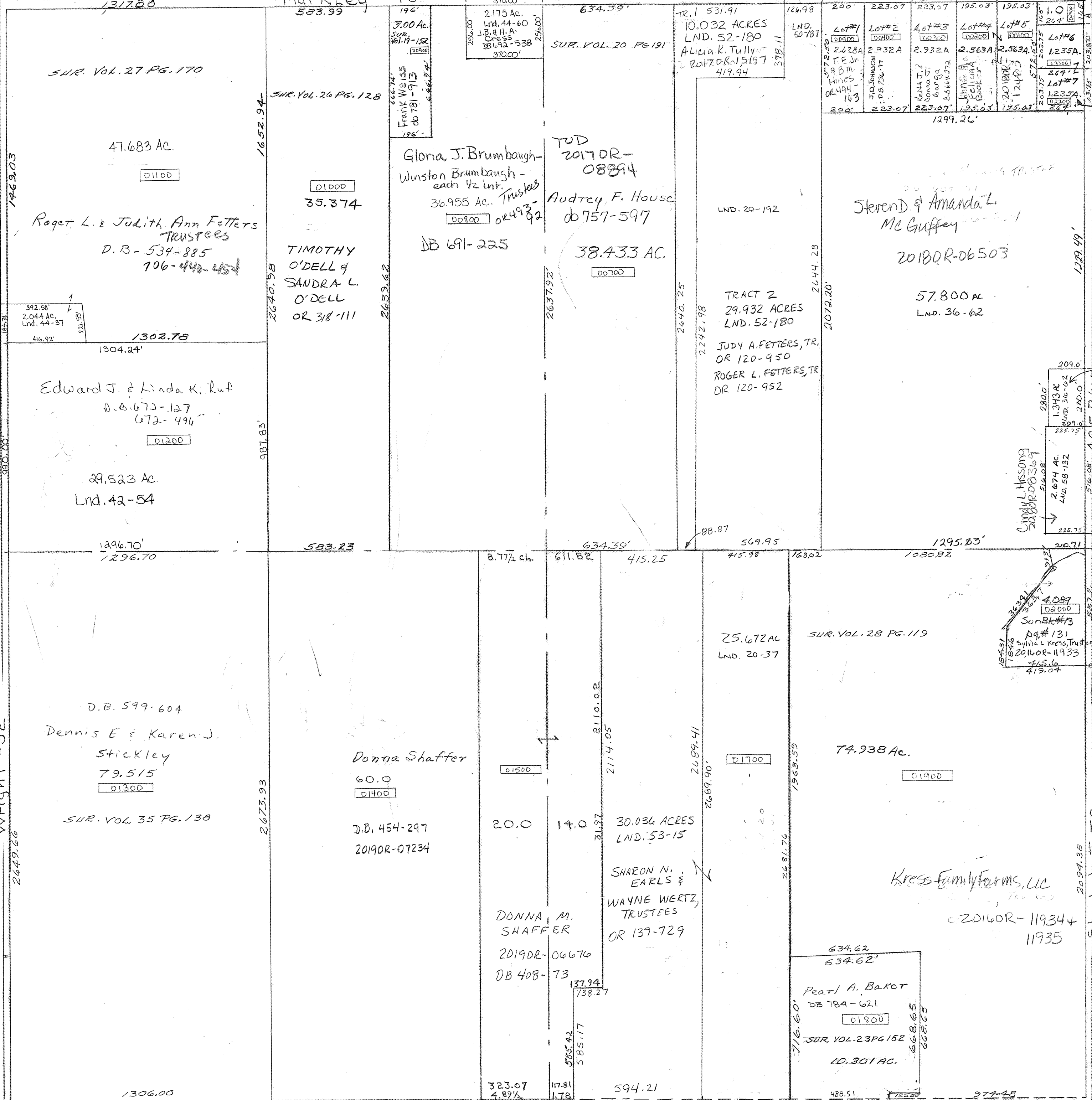


Markley # 45



Vol. 20 Pg 37 Cen. Pt SE
Lnd. 44-54-SW Pt. NW Qtr.
Lnd. 44-37-W. Pt. NW Qtr.
Lnd. 44-60-NE Pt. NW Qtr.
A SEC. 15 No record of width
A SEC. 15 Wright # 52
Surveys
Vol. 3 Pg. 274 - E 1/2 NE QTR
13 " 131 - NE Pt SE
Rec. Vol. 9 " 20 - NE Pt. NE Sunny Acres #1

Joseph D Johnson
OR 201-691
Sunny Acres
Subd. #1
Rec. Vol. 9-Pg. 20
R.E. & Lis Creech
DB 742-492

55' RW THRU
SUBDIVISION
L32-UN0140-
SMDA NUMBER

J.L. F.K.S.
McGuffey
DB 605-196

SCALE = 1" = 330'

55' RW THRU
V SEC. 13
V SEC. 23
Shiloh # 50