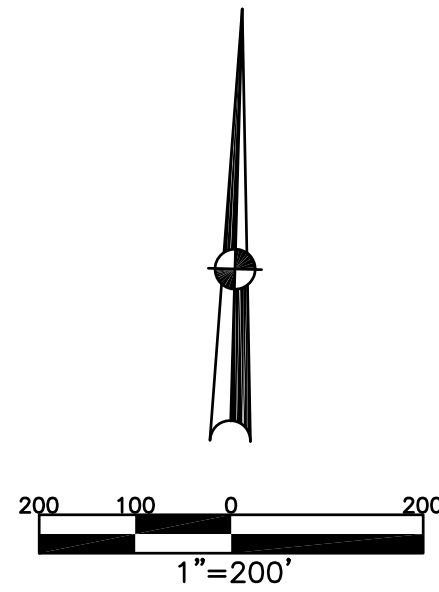


UNION TWP.
MIAMI COUNTY, OHIO

SECTION 23 TOWN 6 RANGE 5
NORTHEAST QUARTER

PARCEL NUMBER
L32-

PLAT 23-C



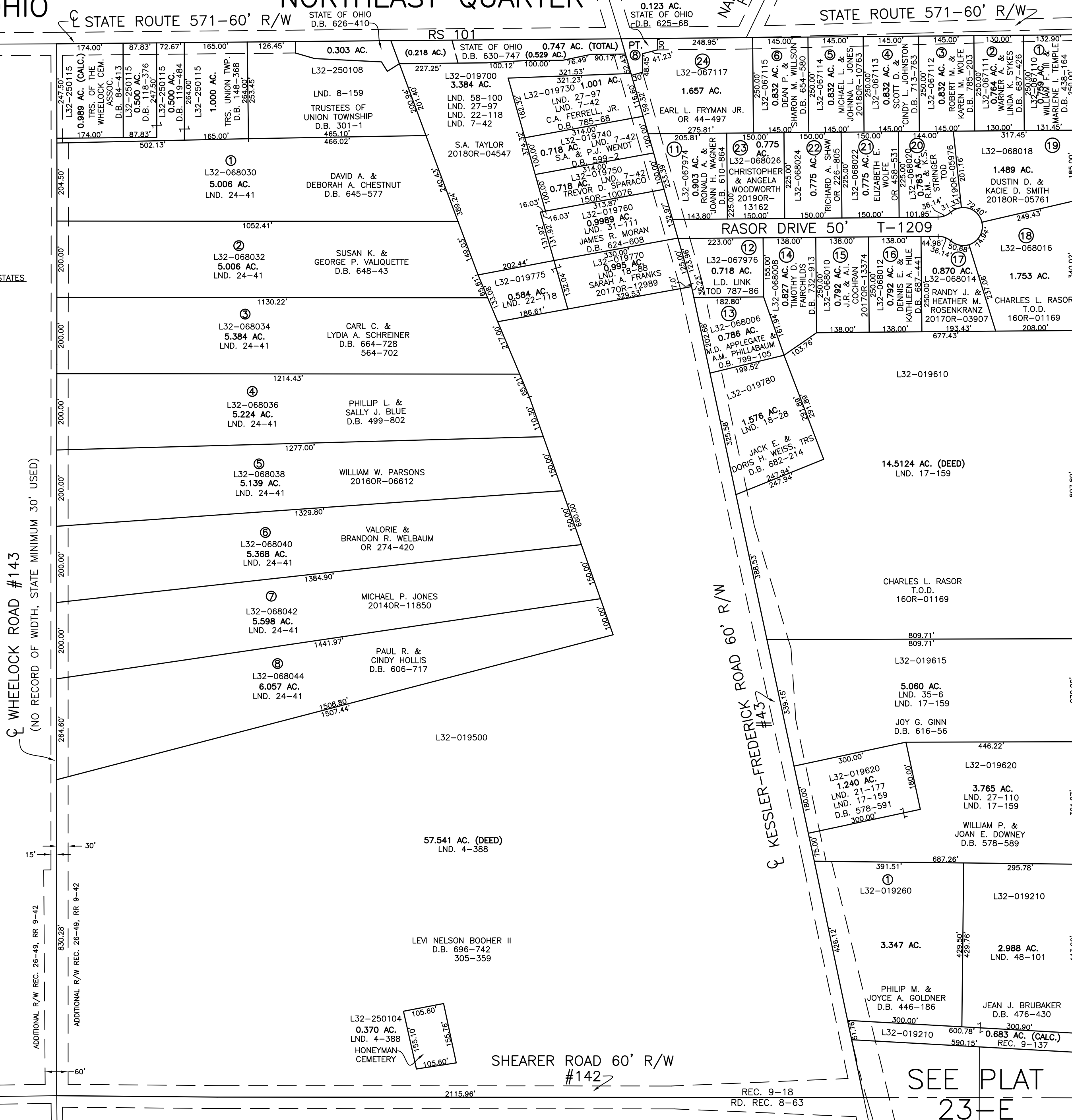
ARTISTIC HOMES ESTATES
REC. 11-52
LOTS 1-8

ABBREVIATION LEGEND		
2014OR-07759	=	RECORDER'S DOCUMENT NUMBER
OR 257-619	=	OFFICIAL RECORD 257 PAGE 619
D.B. 613-172	=	DEED BOOK 613, PAGE 172
REC. 15-72	=	RECORDER'S PLAT BOOK 15, PAGE 72
LND. 33-15	=	LAND SURVEY VOLUME 33, PAGE 15
LOT 19-12	=	LOT SURVEY VOLUME 19, PAGE 12
R.R. 8-29	=	ROAD RECORD VOLUME 8, PAGE 29
R/W	=	RIGHT OF WAY
CL	=	CENTERLINE
AC.	=	ACRES
TWP.	=	TOWNSHIP
TR.	=	TRACT
Ⓢ	=	LOT CREATED BY RECORDER'S PLAT

LINE LEGEND		
	=	Blow-up Boundary
	=	Property Line
	=	Lot Split Line
	=	Section Line
	=	Centerline
	=	Right-of-Way Line
	=	Corporation Line

SURVEY INDEX		
LND. 4-388	LND. 35-6	REC. 9-18
LND. 7-42	LND. 48-101	REC. 9-64
LND. 8-159	LND. 58-100	REC. 9-137
LND. 17-159		REC. 11-16
LND. 18-28		REC. 11-47
LND. 18-88		REC. 11-52
LND. 21-177		REC. 22-79
LND. 22-118		REC. 26-49
LND. 24-41		
LND. 27-97		RD. REC. 8-63
LND. 27-110		RD. REC. 9-42
LND. 31-111		RS 101

WHEELLOCK ROAD #143
(NO RECORD OF WIDTH, STATE MINIMUM 30' USED)



FARMVIEW ACRES
SEC. 1
REC. 9-64
LOTS 1-10

REPLAT: LOTS 9-10
REC. 11-16
LOTS 11-12

REPLAT: LOTS 7, PT. B
REC. 22-79
LOT 24

FARMVIEW ACRES
SEC. 2
REC. 11-47
LOTS 13-23

COUNTRYSIDE ALLOTMENT
SEC. A
REC. 9-137
LOTS 1 & 2

PREPARED BY: MIAMI COUNTY ENGINEER'S MAP DEPARTMENT
PAUL P. HUELSKAMP, P.E., P.S., COUNTY ENGINEER
DATE: NOVEMBER 3, 2016 MDB

REVISED: November 6, 2019 DSTUMPPF

SHEARER ROAD 60' R/W
#142

SEE PLAT
23-E