

MIAMI COUNTY, OHIO
CITY OF PIQUA

S.E. PLAT 8

SCALE: 1" = 50'

PARCEL NUMBER
N44 - - - - -

PLAT 4

PLAT 5

EAST MAIN ST. 66' R/W

LOTS NO. 3530 through 3540
KIMBERS ADDITION - D.B.20, PG.380

LOTS NO. 3713 through 3724
BROOKS ADDITION - REC. BK.2, PG.66

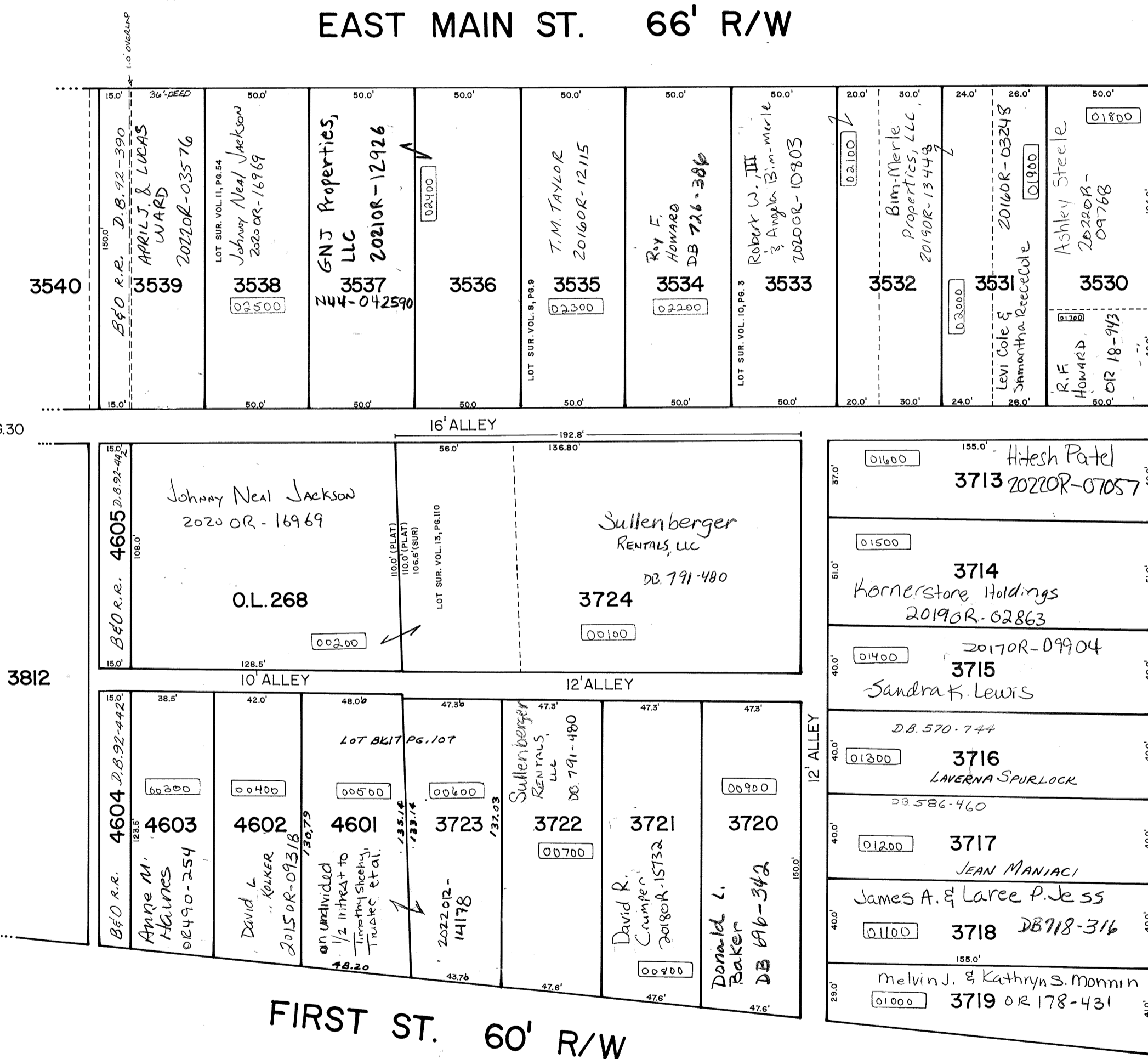
LOTS NO.4601 through 4605
SUB-DIVIDED FROM O.L.268
(formerly O.L. 12, Huntersville) REC. BK.3, PG.30

PLAT 7

3812

STAUNTON RD. 60' R/W

PLAT 10



PLAT 24