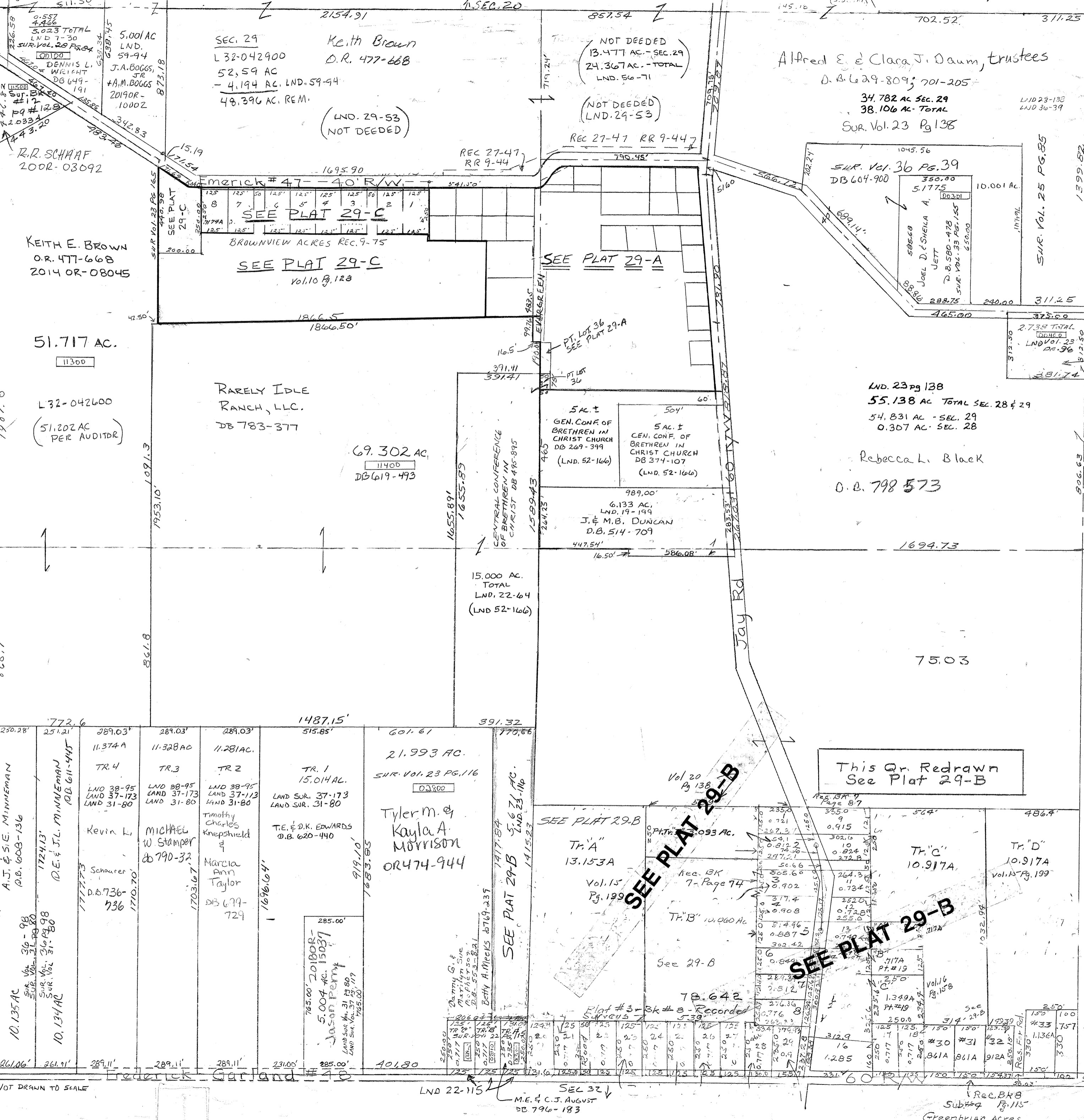


Range 5 Town 6 Section 29 Union Township SEE SEC. 29 Plat No. 29



- Vol. 15 Pg. 189 S.P. 5E
- Vol. 16 Pg. 209 Con. Pt. NW
- Vol. 16 Pg. 158 Division of Lot #19 in Greenbriar Subd
- Vol. 17 Pg. 85 E. Pt. NW
- Rec. Vol. 19 Pg. 75 Brown View Subd #1
- 19 Pg. 199 SW Cor NE
- SUR Vol. 31 Pg 80
- SUR Vol. 36 Pg 98

- Vol. 10 - Pg. 12 W. & N. Pt. W 1/2
- 13B - E. Corner of Pt. NW 1/4
- 153 - W. Pt. NE + Hoke
- 12B - NW Pt. NW
- 102 - S. Pt. SE
- 107 - S. Pt. SE
- 3 - S. Pt. SE
- 63A - W. Pt. NE
- 115 - S. Pt. NE
- Vol. 10 Pg. 36 - E. Pt. NW - Hoke
- Vol. 9 Pg. 55 - E. Pt. NW - Hoke
- Vol. 9 Pg. 133 - W. Pt. NE - Hoke
- Vol. 9 Pg. 80 - E. Pt. NW - Hoke
- 78.31 5168.46 1st Sec. 30
- 865.7
- 1907.0

- NW Cor NW - Vol. 3 Pg. 339
- SE Cor SE - Vol. 6 Pg. 102
- NW Pt NW - Vol. 7 Pg. 30
- W Pt NE - Hoke - Vol. 8 Pg. 165
- Hoke Plat - Vol. 9 Pg. 23
- 1730.57
- A.J. & S.E. MINNEMAN DB 608-136
- 1724.13
- D.E. & J.L. MINNEMAN DB 611-445
- 1717.73
- Schaumer DB 736-736
- 1710.70
- 1703.67
- Timothy Charles Kneppshield & Marcia Ann Taylor DB 679-729
- 1696.64

NOT DRAWN TO SCALE

NSADA NUMBER
L32-UN029

SCALE - 1" = 330'

- 10.135 AC
- 10.134 AC
- 10.134 AC
- 5.004 AC. 15037
- 5.000 AC. 20100R
- 5.004 AC. 15037
- 5.004 AC. 15037

REVISED!
9-9-2019 DS
REVISED: 3-3-15
AM

LND 22-115
SEC 32
M.E. & C.J. AUGUST
DB 796-183

Rec. BK 8
Sub # 4
Pg. 115
Greenbriar Acres