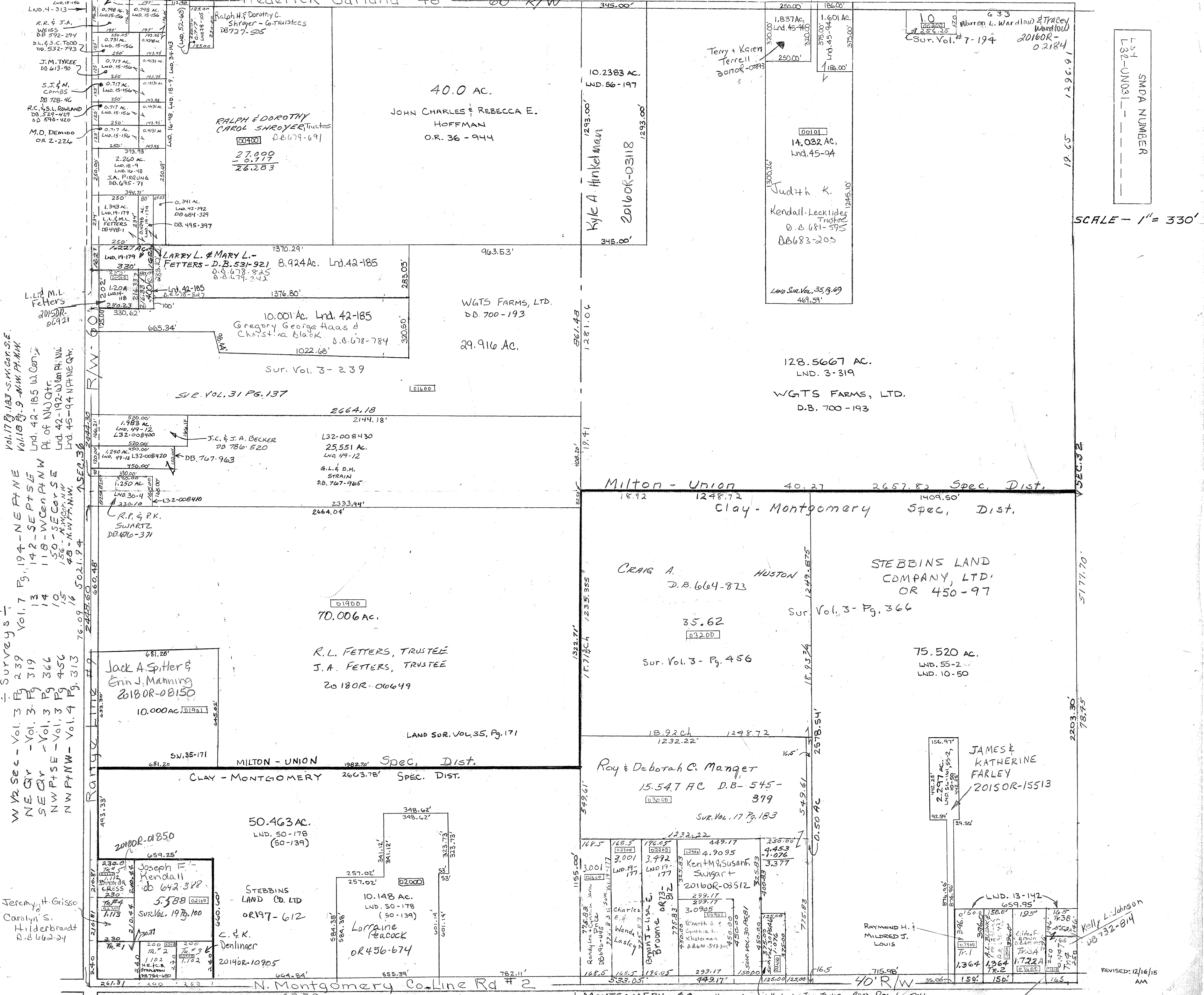


Frederick-Garland #48 60' R/W



Surveys - Vol. 3 Pg. 239
NE Qtr - Vol. 3 Pg. 319
SE Qtr - Vol. 3 Pg. 366
NW P+SE - Vol. 3 Pg. 456
NW P+NW - Vol. 4 Pg. 313

Jeremy H. Grisso
Carolyn S.
Hilderbrandt
D.B. 662-24

SMCA NUMBER
L32-UN031

SCALE - 1" = 330'

SEC. 32

5177.70

2203.30

78.75

REVISED: 12/16/15 AM

Montgomery Co. Kevin James & Katherine Joya Taylor ROAD REC. 6-214 2010R-10855