

UNION TWP.  
MIAMI COUNTY, OHIO

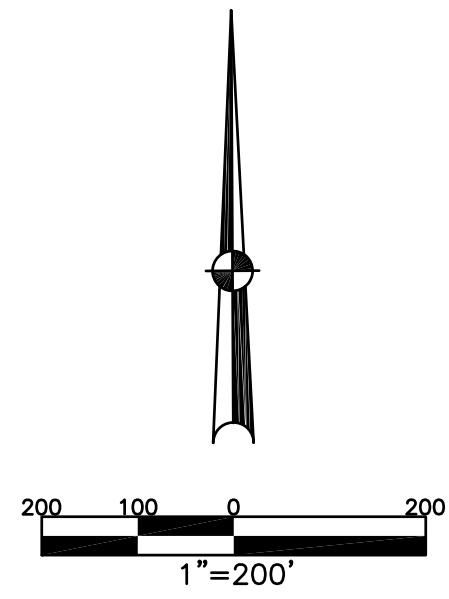
SECTION 32 TOWN 6 RANGE 5  
SE 1/4

PARCEL NUMBER  
L32-\_\_\_\_\_ PLAT 32-A

JAY ROAD 60' R/W  
#56

SEE PLAT  
32-B

BAKER ROAD  
T-58



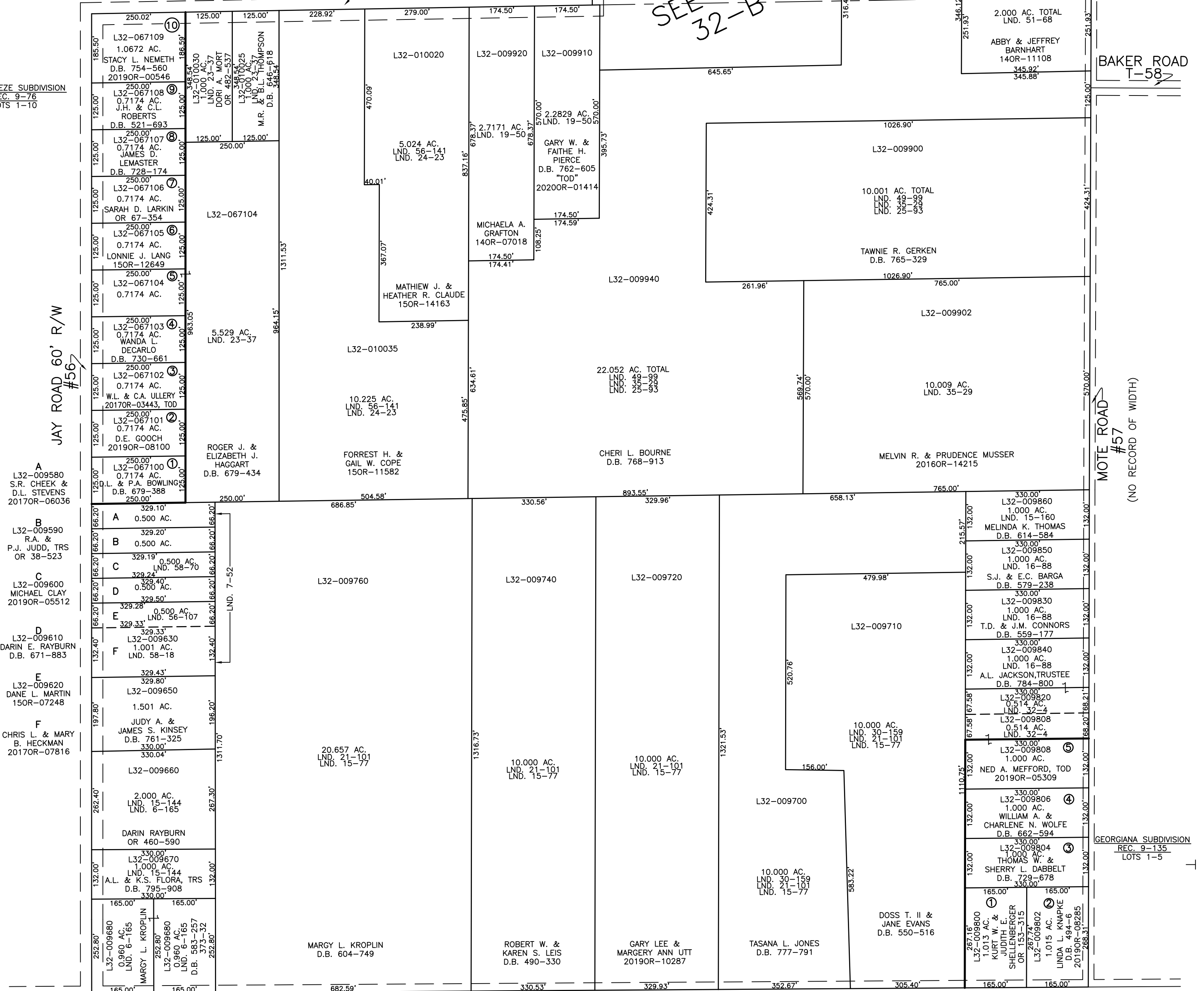
ABBREVIATION LEGEND		
2014OR-07759	=	RECORDER'S DOCUMENT NUMBER
OR 257-619	=	OFFICIAL RECORD 257 PAGE 619
D.B. 613-172	=	DEED BOOK 613, PAGE 172
REC. 15-72	=	RECORDER'S PLAT BOOK 15, PAGE 72
LND. 33-15	=	LAND SURVEY VOLUME 33, PAGE 15
LOT 19-12	=	LOT SURVEY VOLUME 19, PAGE 12
R.R. 8-29	=	ROAD RECORD VOLUME 8, PAGE 29
R/W	=	RIGHT OF WAY
C	=	CENTERLINE
AC.	=	ACRES
TWP.	=	TOWNSHIP
TR.	=	TRACT
Ⓢ	=	LOT CREATED BY RECORDER'S PLAT

LINE LEGEND		
	=	Blow-up Boundary
	=	Property Line
	=	Lot Split Line
	=	Section Line
	=	Centerline
	=	Right-of-Way Line
	=	Corporation Line

SURVEY INDEX		
LND. 3-244	LND. 56-141	RD. REC. 6-214
LND. 6-165	LND. 58-18	REC. 9-76
LND. 7-52	LND. 58-70	REC. 9-135
LND. 15-77		
LND. 15-144		
LND. 15-160		
LND. 16-88		
LND. 19-50		
LND. 21-101		
LND. 23-37		
LND. 24-23		
LND. 25-93		
LND. 30-159		
LND. 32-4		
LND. 35-29		
LND. 35-57		
LND. 49-99		
LND. 51-68		
LND. 56-107		



PREPARED BY: MIAMI COUNTY ENGINEER'S MAP DEPARTMENT  
PAUL P. HUELSKAMP, P.E., P.S., COUNTY ENGINEER  
DATE: SEPTEMBER 22, 2016 MDB  
REVISED: February 4, 2020 DVENTURA

NORTH MONTGOMERY COUNTY LINE RD. WEST 40' R/W  
#2 RD. REC. 6-214