

SYCAMORE STREET (VACATED)

(SEE PLAT SE 103 FOR DETAILS)

44' R/W

STREET

DOWNING

66' R/W (NOT TO SCALE)

STREET

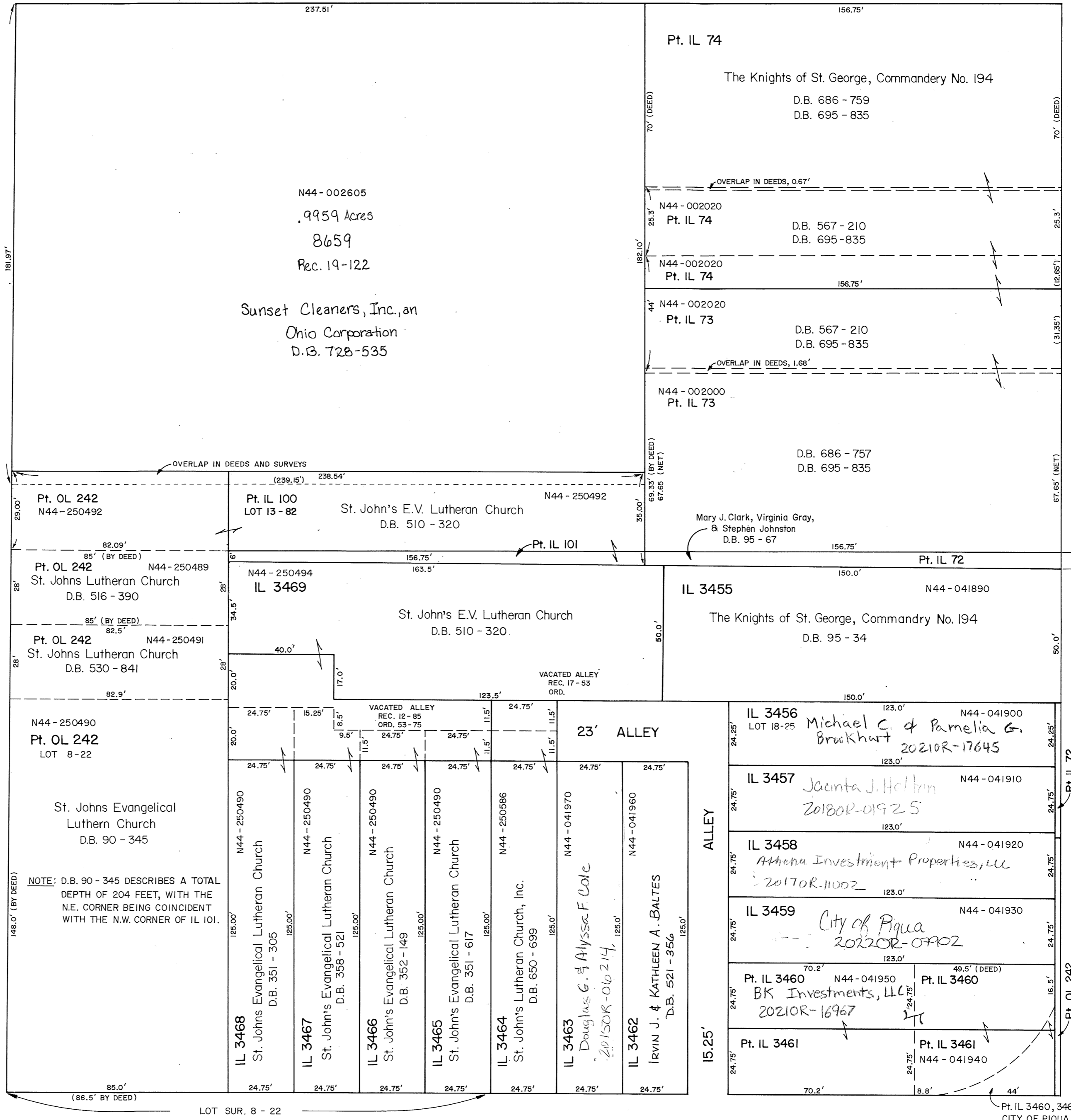
WAYNE



Inlots 72, 73, 74, 99, & 100  
Deed Book I, Page I

Outlot 242 - Rec. Bk. 2 Pg. 5

Inlots 3456 thru 3469  
Rec. Bk. 2 Pg. 143



DEED BOOK 96, PG. 67 DESCRIBES THE NORTHEAST CORNER OF INLOT 72 AS BEING 210' NORTH OF THE NORTHWEST CORNER OF WOOD AND WAYNE STREETS. ADDING FRONTAGES FOR INLOT 73 (89') AND INLOT 74 (107.25') TOTALS 416.25', WHICH IS SUPPORTED BY ORTHOPHOGRAPHY.

NOTE: AS PLATTED IN REC. BK. 2-143, LOTS 3456 THRU 3461 BEGIN 2' WEST OF ORIGINAL WEST LINE OF WAYNE STREET.

Pt. IL 3460, 3461 CITY OF PIQUA D.B. 278 - 470