

PIQUA Corporation

S.E. SECTION

PLAT No 72
Scale 1"=40'

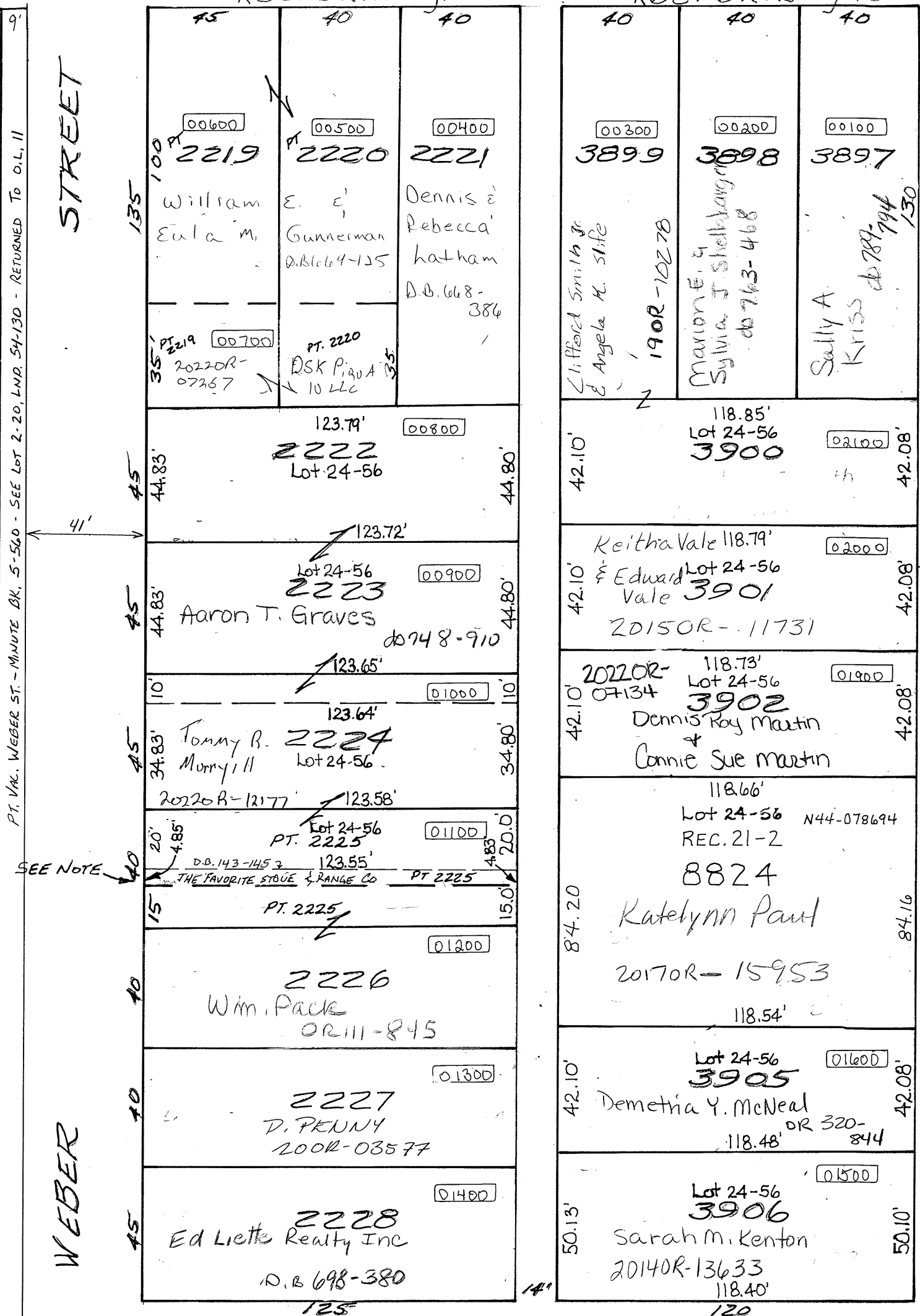
SMDA NUMBER
N44-SE072-_____

ORIG. 36.5' R/W - 5' APPROPRIATED EACH SIDE BY ORD. DATED 4-3-1889

YOUNG STREET

Rec. Bk. 2-Pg. 50

Rec. Bk. 2-Pg. 184



NOTE: THE FAVORITE STOVE & RANGE Co.
ACQUIRED ALL OF INLOT 2225 BY DEED
BOOK 143-145. THEY SOLD OFF 15'
OFF SOUTH SIDE BY DEED BOOK 195-591.
THEN THEY TRANSFERRED ALL OF LOT 2225
EXCEPT 20' OFF SOUTH SIDE, LEAVING
(4.85') 5' CEN. PT STILL OWNED BY THE
FAVORITE STOVE AND RANGE Co.
BY Lot SUR. 24-56

D. VENTURA
DEP. ENG.
12-9-2003

PT. VAC. WEBER ST. - MANUTE BK. 5-560 - SEE LOT 2-20, LNR 54130 - RETURNED TO O.L.I.I

SEE NOTE