

PIQUA Corporation

S.E. SECTION

PLAT No. 77  
Scale 1"=30'

SOUTH

(60' R/W)

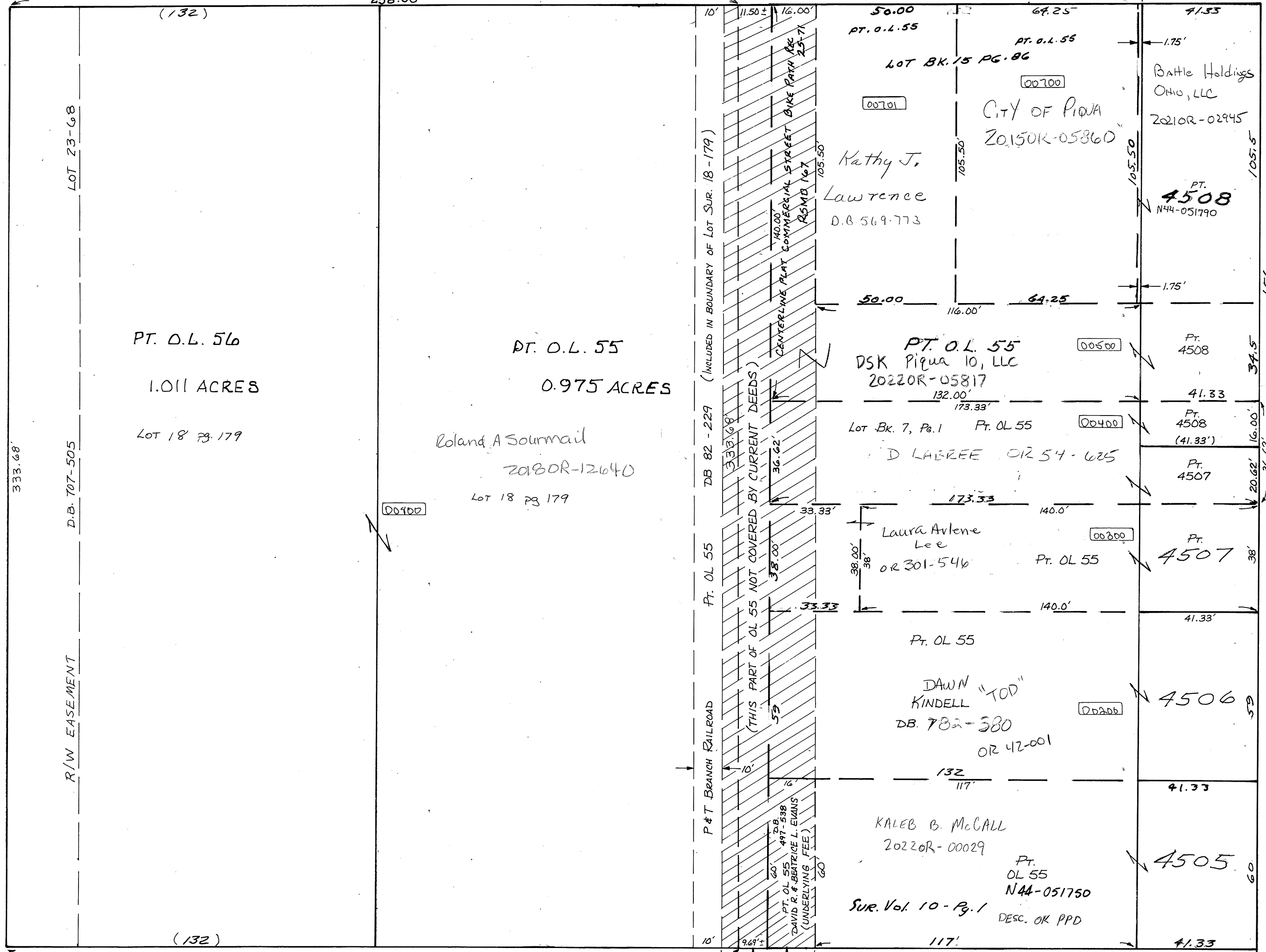
STREET

PARCEL NUMBER  
N 44 -

STREET

25'

ORR



AVE.

ROOSEVELT

EASEMENT AREA GRANTED TO CITY OF PIQUA FOR COMMERCIAL ST. BY D.B. 72-637 (NOT TO EXCEED 16.5 FEET IN WIDTH)

EASEMENT AREA GRANTED TO CITY OF PIQUA FOR COMMERCIAL ST. BY D.B. 72-639 (NOT TO EXCEED 16.5 FEET IN WIDTH). DEEDS AND SURVEYS INDICATE 16 FEET.

REVISED: 4/13/22 ADP