

PARCEL NUMBER
N 44 - - - - -

WOOD STREET 49.5' R/W

(PT. OL 16) FORMERLY HYDRAULIC CANAL LAND

COLLEGE STREET R/W VARIES

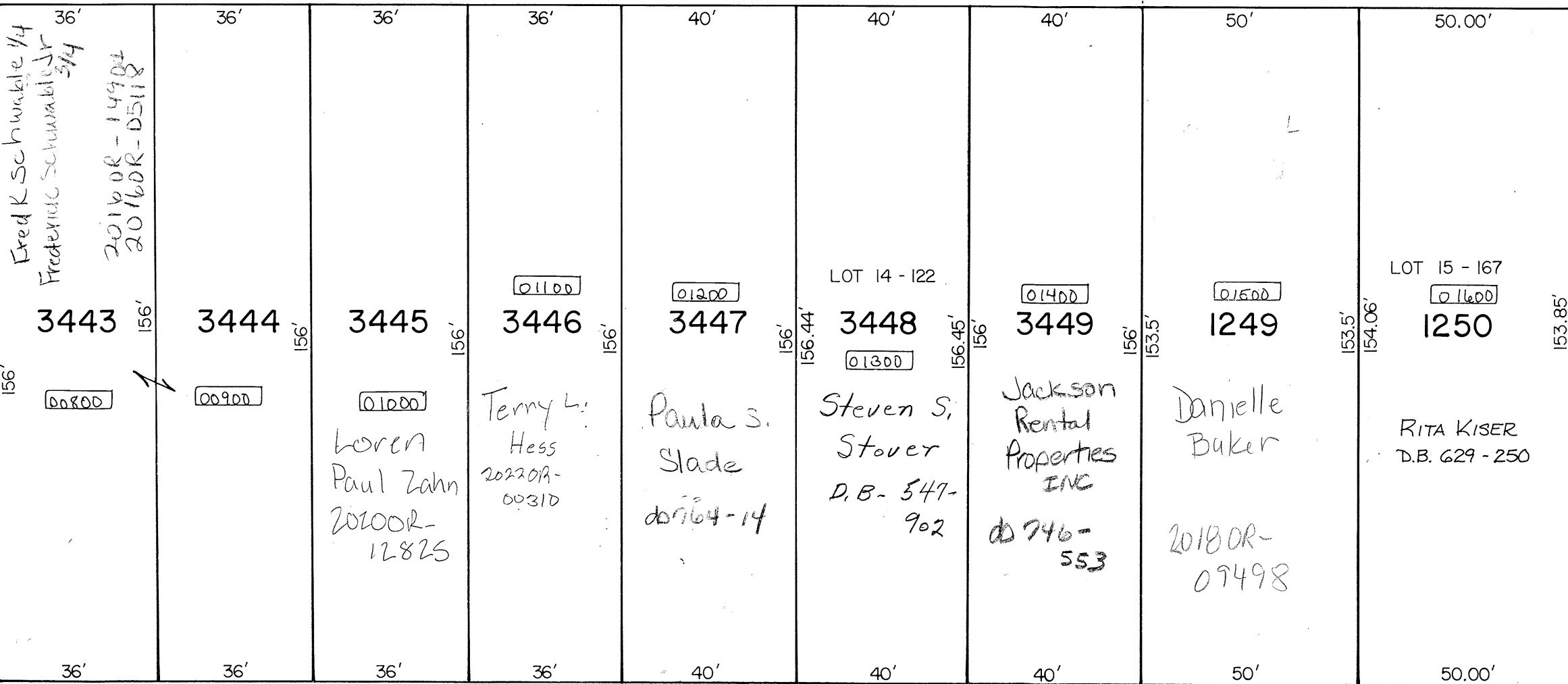
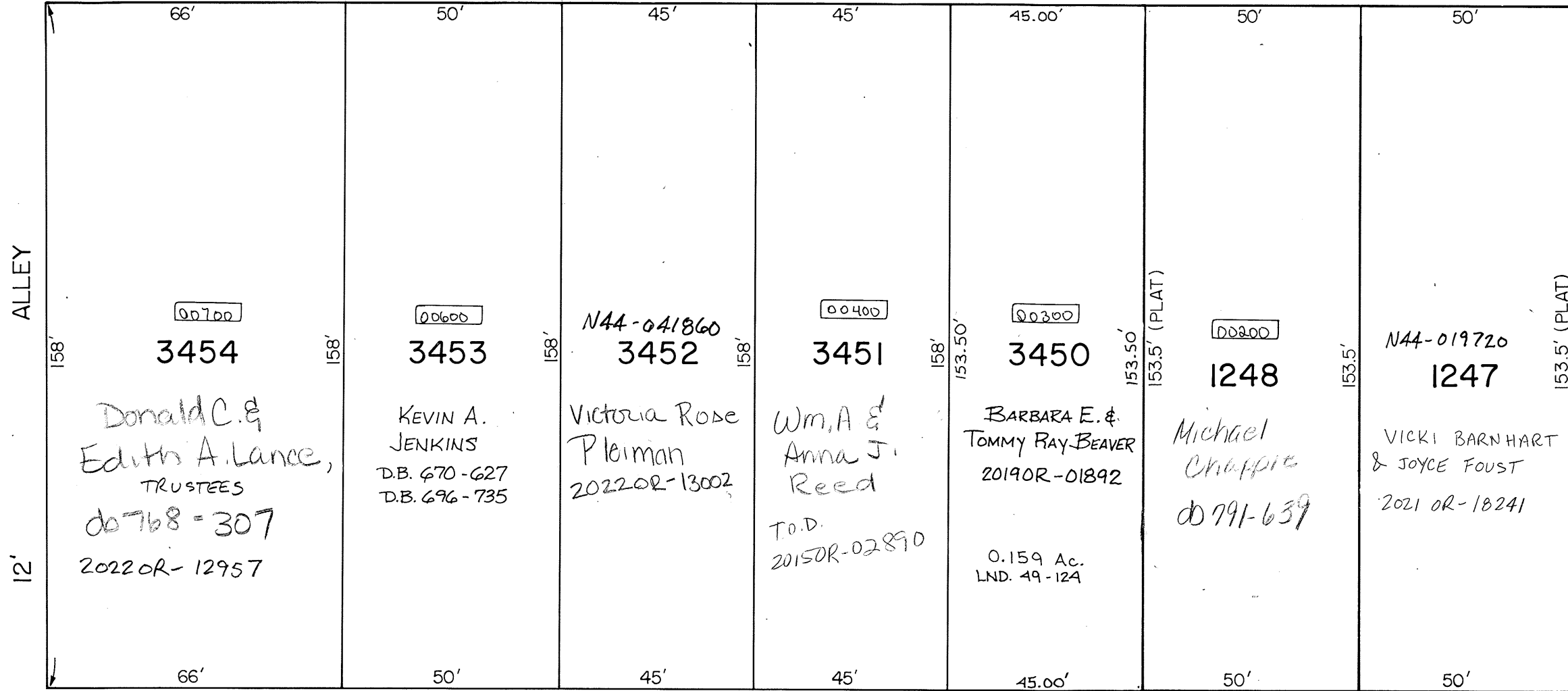
CITY OF PIQUA
D.B. 72-636

THIS PART OF OL 9 WAS CONVEYED BY JOSEPH DAVIS TO THE
PIQUA HYDRAULIC CO. JULY 30, 1868. NO DEED RECORDED.

PT. OL 9 - FORMERLY HYDRAULIC CANAL LAND

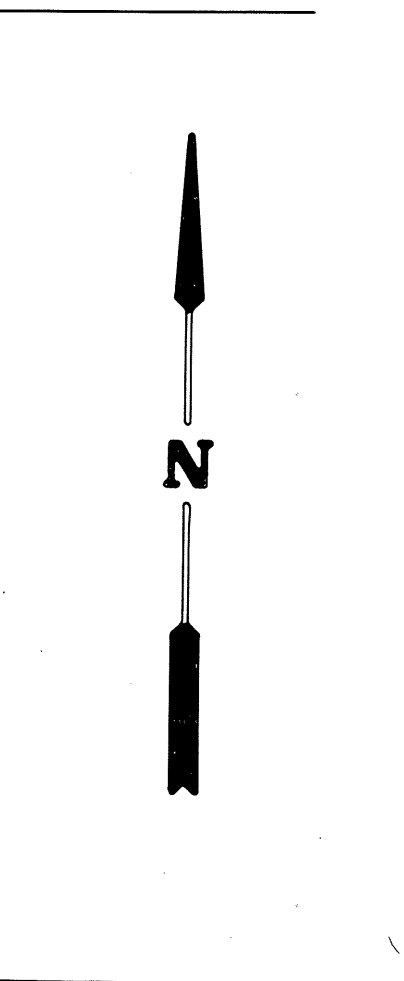
CINCINNATI, HAMILTON, & DAYTON RAILROAD Co.
D.B. 87-14

PT. OL 9



25' R/W

WEBER STREET



INLOTS 1247 THRU 1250, REC. BK. 1, PAGE 236
INLOTS 3443 THRU 3454, REC. BK. 2, PAGE 140
OUTLOTS 9 & 16, DEED BK. 15, PAGE 488

32' SE CORNER, OUTLOT 16

32' SW CORNER, OUTLOT 9

MIAMI STREET 50' R/W

SE CORNER, OUTLOT 9