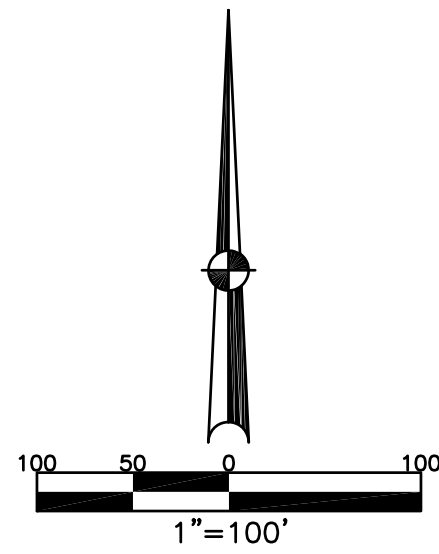


CITY OF PIQUA
MIAMI COUNTY, OHIO

SECTIONS 19, 20 TOWN 6 RANGE 6

PARCEL ID NUMBER
N44-_____

PLAT SE 131

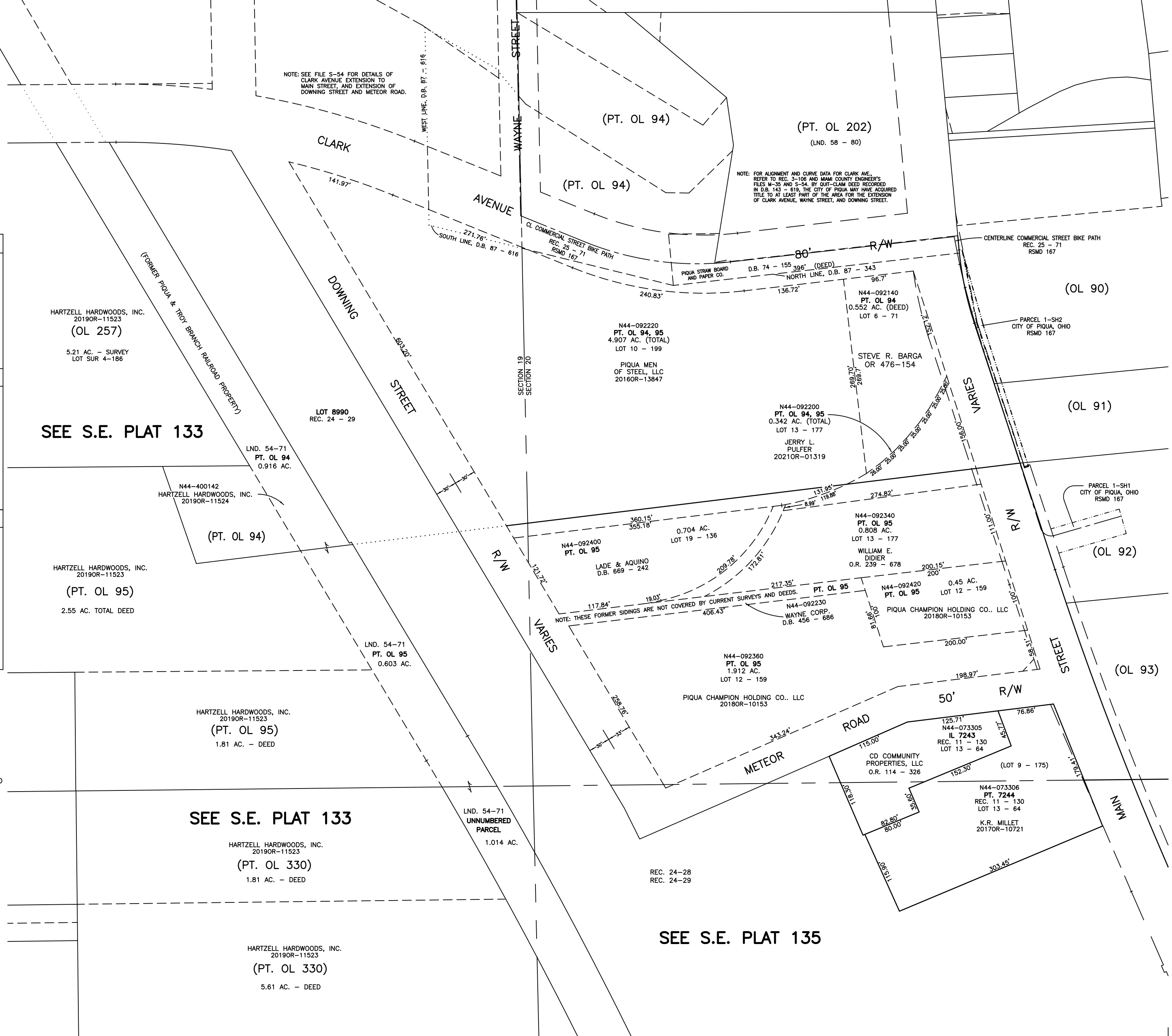


ABBREVIATION LEGEND		
OR 406-509	=	OFFICIAL RECORD 406 PAGE 509
D.B. 613-172	=	DEED BOOK 613, PAGE 172
REC. 15-72	=	RECORDER'S PLAT BOOK 15, PAGE 72
LND. 33-15	=	LAND SURVEY VOLUME 33, PAGE 15
LOT 19-12	=	LOT SURVEY VOLUME 19, PAGE 12
R.R. 8-29	=	ROAD RECORD VOLUME 8, PAGE 29
R/W	=	RIGHT OF WAY
CL	=	CENTERLINE
AC.	=	ACRES
TWP.	=	TOWNSHIP
TR.	=	TRACT
IL	=	INLOT

LINE LEGEND	
	Blow-up Boundary
	Property Line
	Lot Split Line
	Section Line
	Centerline
	Right-of-Way Line
	Corporation Line

SURVEY INDEX		
LOT 2 - 123	LND. 14 - 18	REC. 1 - 331, 332
LOT 2 - 124A, B	LND. 16 - 167	REC. 9 - 71
LOT 6 - 71	LND. 17 - 133	REC. 11 - 130
LOT 9 - 35	LND. 54 - 71	REC. 24-28
LOT 9 - 175		REC. 24-29
LOT 10 - 199		
LOT 12 - 159		
LOT 13 - 64		
LOT 13 - 177		
LOT 19 - 136		

HARTZELL PLAT		
BEING A CONSOLIDATION OF PT. OUTLOT 94, PT. OUTLOT 95, OUTLOT 257, OUTLOT 296, OUTLOT 328, OUTLOT 330, UNNUMBERED LOT, INLOTS 4061 & 4062 VACATED ELETRIC AVENUE, PT. VACATED ALLEY CITY OF PIQUA, MIAMI COUNTY, OHIO INLOT 9083 TOTAL AREA = 26.468 ACRES		
PLATBOOK 28 PAGE 21A		



PREPARED BY: MIAMI COUNTY ENGINEER'S MAP DEPARTMENT
PAUL P. HUELSKAMP, COUNTY ENGINEER
DATE: APRIL 1, 2002
REVISED: February 3, 2021 CSHOUP

SEE S.E. PLAT 135

SEE S.E. PLAT 133

SEE S.E. PLAT 133