

SMDA NUMBER
N44-SE150- - - - -

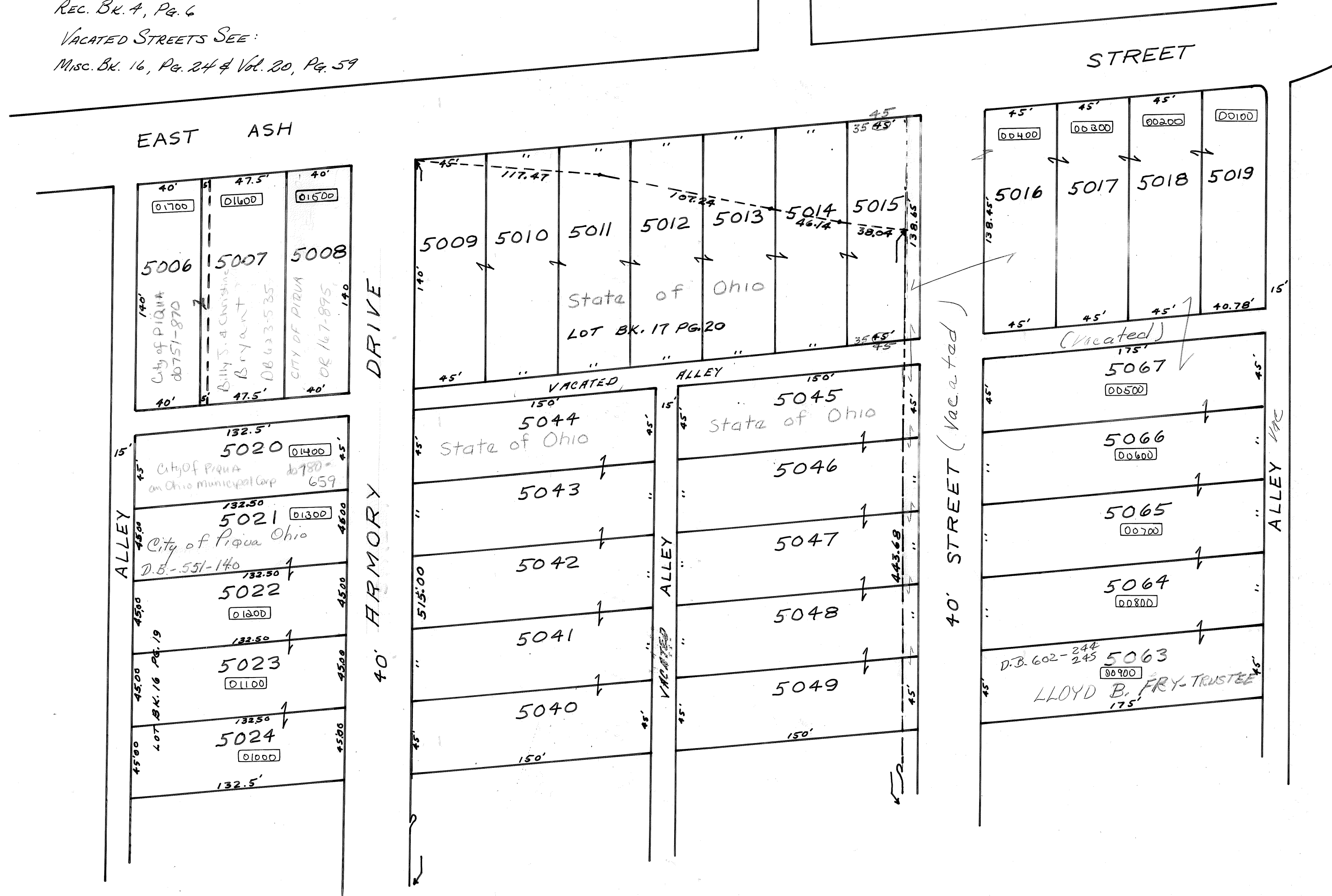
THIS PAGE NO LONGER USED
SEE PIQUA SE 92

CHARLES H. MAY SUB-DIVISION:

REC. BK. 4, Pg. 6

VACATED STREETS SEE:

Misc. BK. 16, Pg. 24 & Vol. 20, Pg. 59



SEE PLAT 134 S.E.

REVISED 12-28-11 DS