

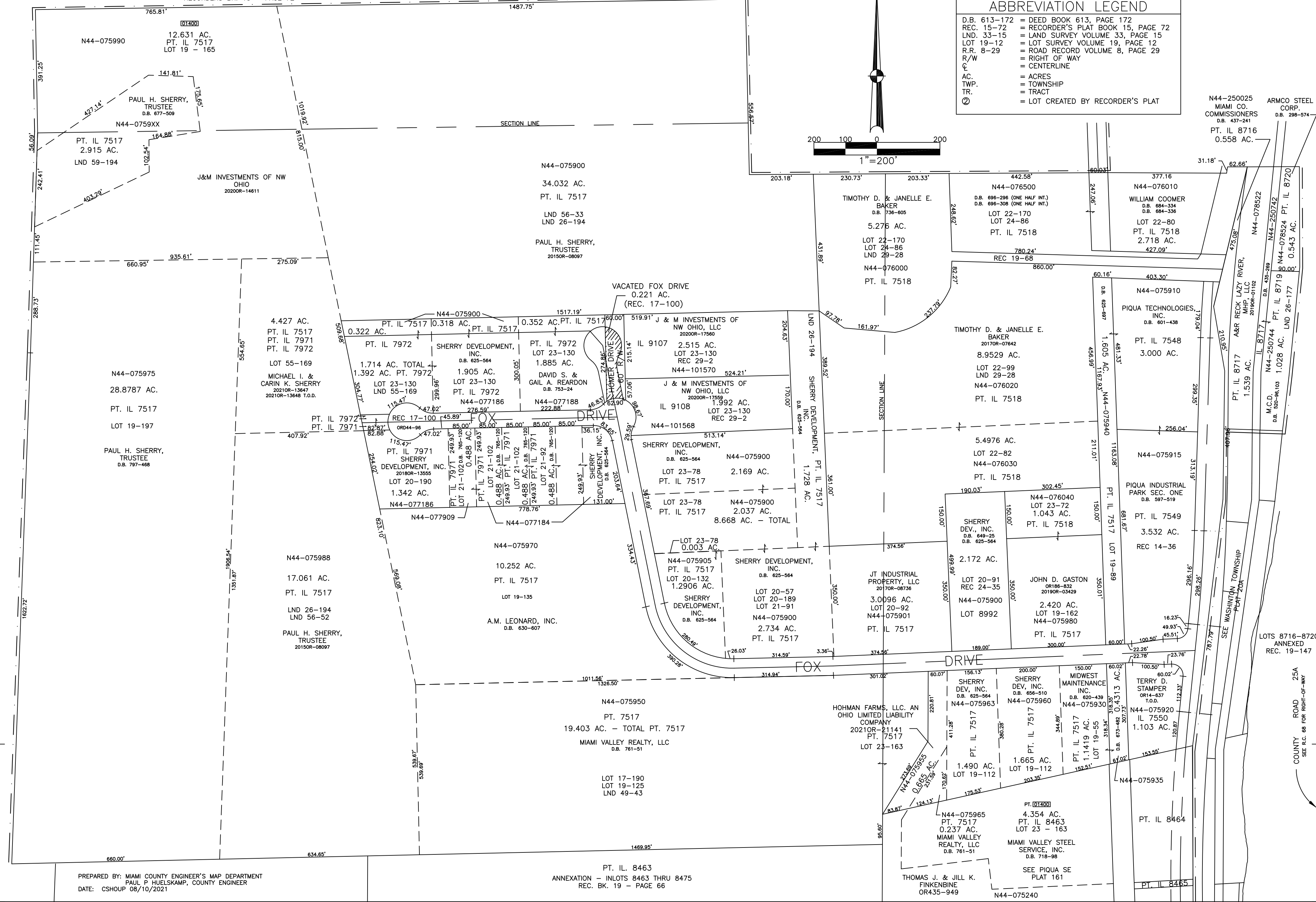
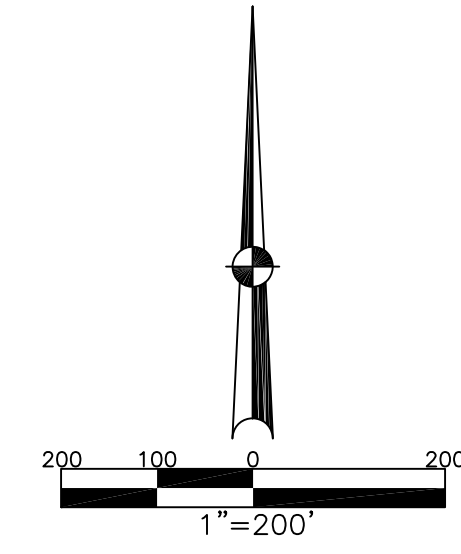
SECTION 29 & 30  
TOWN 6  
RANGE 6E

# CITY OF PIQUA MIAMI COUNTY, OHIO

## PLAT SE 156

ANNEXATION TO CITY OF PIQUA  
RECORDERS BK. 13 - PAGE 72

ABBREVIATION LEGEND	
D.B. 613-172	= DEED BOOK 613, PAGE 172
REC. 15-72	= RECORDER'S PLAT BOOK 15, PAGE 72
LND. 33-15	= LAND SURVEY VOLUME 33, PAGE 15
LOT 19-12	= LOT SURVEY VOLUME 19, PAGE 12
R.R. 8-29	= ROAD RECORD VOLUME 8, PAGE 29
R/W	= RIGHT OF WAY
C	= CENTERLINE
AC	= ACRES
TWP.	= TOWNSHIP
TR.	= TRACT
②	= LOT CREATED BY RECORDER'S PLAT



PREPARED BY: MIAMI COUNTY ENGINEER'S MAP DEPARTMENT  
PAUL P. HUELSKAMP, COUNTY ENGINEER  
DATE: CSHOUP 08/10/2021

ANNEXATION - LOTS 8463 THRU 8475  
REC. BK. 19 - PAGE 66

COUNTY ROAD 25A  
SEE REC. 68 FOR RIGHT-OF-WAY