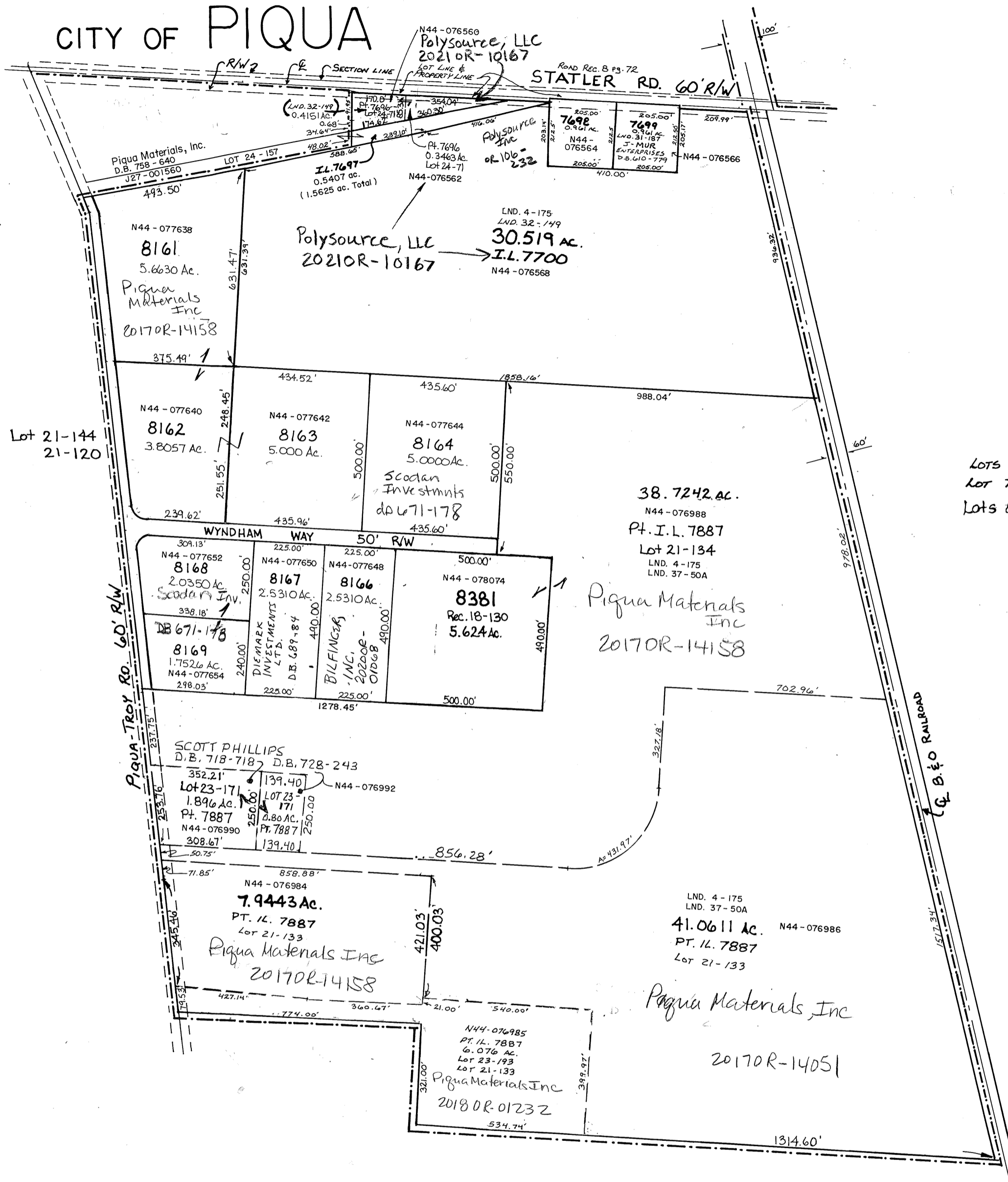


CITY OF PIQUA



Handwritten notes:
 1. 11/17/18
 2. 11/17/18
 3. 11/17/18
 4. 11/17/18
 5. 11/17/18
 6. 11/17/18
 7. 11/17/18
 8. 11/17/18
 9. 11/17/18
 10. 11/17/18

LOTS 7696 - 7700 - ANNEXED REC. BK. 15 PG 12
 LOT 7887 - ANNEXED REC. BK. 15 PG. 137 (LAND SUR. 37-50A)
 Lots 8165 & Pt. 7887 Replatted Rec. 18-130
 LND. 4-175
 WYNDHAM INDUSTRIAL PARK SEC. I
 LOTS 8161 - 8169
 REC. BK. 18-14



1" = 300'