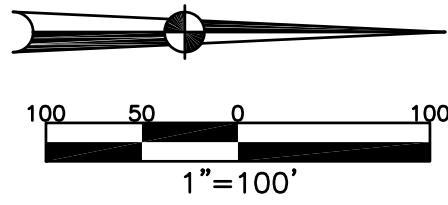


SPRINGCREEK TOWNSHIP  
MIAMI COUNTY, OHIO

PART SOUTHEAST QUARTER  
SECTION 25 TOWN 1 RANGE 12

PARCEL ID NUMBER  
J27-\_\_\_\_\_

PLAT 21-B

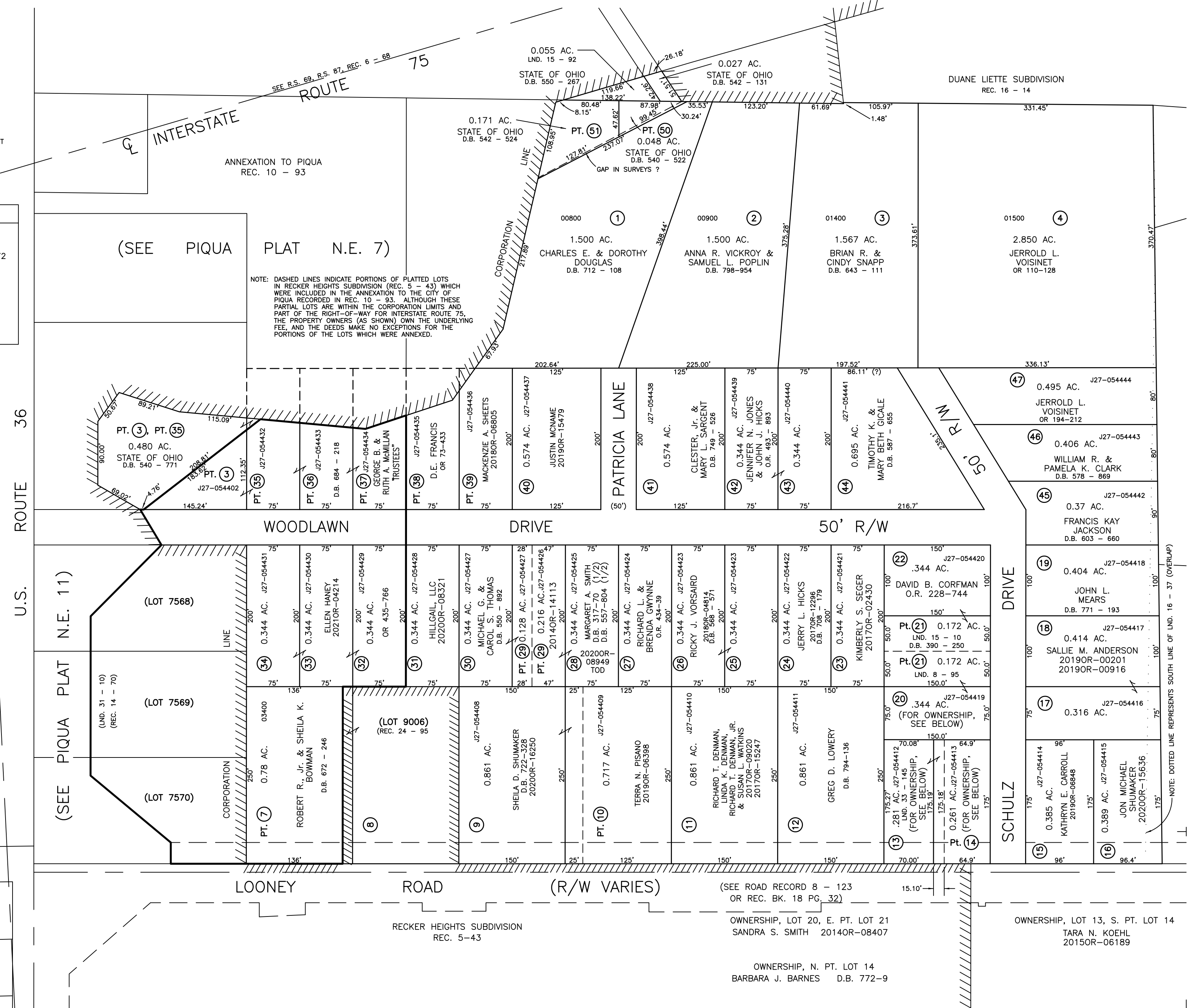


PREPARED BY: MIAMI COUNTY ENGINEER'S MAP DEPARTMENT  
PAUL P. HUELSKAMP, COUNTY ENGINEER  
OCTOBER 16, 1996

REVISED: March 15, 2021 IGRIFIN

ABBREVIATION LEGEND	
2014OR-07759	= RECORDER'S DOCUMENT NUMBER
OR 60-978	= OFFICIAL RECORD 60 PAGE 978
D.B. 613-172	= DEED BOOK 613, PAGE 172
REC. 15-72	= RECORDER'S PLAT BOOK 15, PAGE 72
LND. 33-15	= LAND SURVEY VOLUME 33, PAGE 15
LOT 19-12	= LOT SURVEY VOLUME 19, PAGE 12
R.R. 8-29	= ROAD RECORD VOLUME 8, PAGE 29
R/W	= RIGHT OF WAY
CL	= CENTERLINE
AC.	= ACRES
TWP.	= TOWNSHIP
TR.	= TRACT
②	= LOT CREATED BY RECORDER'S PLAT

SURVEY INDEX		
LND. 6-120	REC. 5-43	
LND. 8-95	REC. 10-93	
LND. 15-10	REC. 14-70	
LND. 16-37	REC. 16-14	
LND. 31-10	REC. 24-95	
LND. 33-145		
	R.S. 69	
	R.S. 87	
	RD. REC. 8-123	



NOTE: DASHED LINES INDICATE PORTIONS OF PLATTED LOTS IN RECKER HEIGHTS SUBDIVISION (REC. 5 - 43) WHICH WERE INCLUDED IN THE ANNEXATION TO THE CITY OF PIQUA RECORDED IN REC. 10 - 93. ALTHOUGH THESE PARTIAL LOTS ARE WITHIN THE CORPORATION LIMITS AND PART OF THE RIGHT-OF-WAY FOR INTERSTATE ROUTE 75, THE PROPERTY OWNERS (AS SHOWN) OWN THE UNDERLYING FEE, AND THE DEEDS MAKE NO EXCEPTIONS FOR THE PORTIONS OF THE LOTS WHICH WERE ANNEXED.

NOTE: DOTTED LINE REPRESENTS SOUTH LINE OF LND. 16 - 37 (OVERLAP)