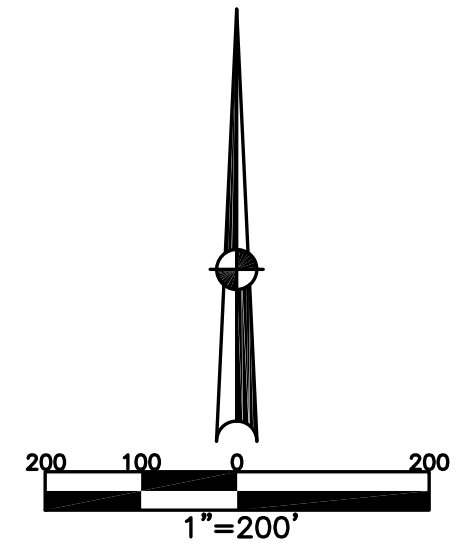


SPRINGCREEK TWP.
MIAMI COUNTY, OHIO

NORTHEAST QUARTER
SECTION 26 TOWN 1 RANGE 12

PARCEL NUMBER
J27-_____

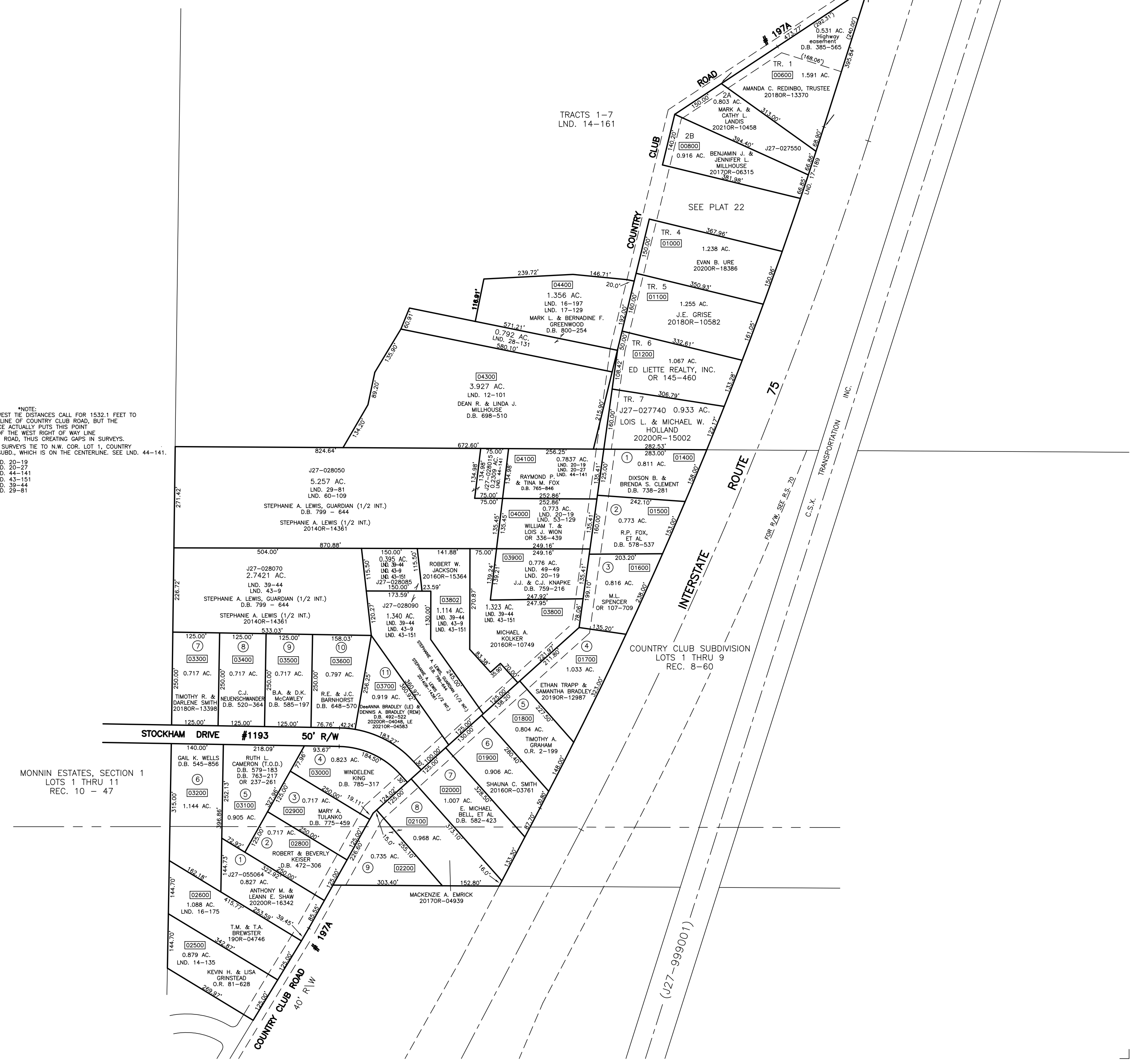
PLAT 22A



ABBREVIATION LEGEND	
2014OR-07759	= RECORDER'S DOCUMENT NUMBER
OR 107-709	= OFFICIAL RECORD 107 PAGE 709
D.B. 613-172	= DEED BOOK 613, PAGE 172
REC. 15-72	= RECORDER'S PLAT BOOK 15, PAGE 72
LND. 33-15	= LAND SURVEY VOLUME 33, PAGE 15
LOT 19-12	= LOT SURVEY VOLUME 19, PAGE 12
R.R. 8-29	= ROAD RECORD VOLUME 8, PAGE 29
R/W	= RIGHT OF WAY
CL	= CENTERLINE
AC.	= ACRES
TWP.	= TOWNSHIP
TR.	= TRACT
Ⓢ	= LOT CREATED BY RECORDER'S PLAT

SURVEY INDEX		
NORTHEAST QUARTER		
LND. 3-163	LND. 43-151	REC. 8-60
LND. 12-101	LND. 44-141	REC. 10-47
LND. 14-161	LND. 46-74	
LND. 16-197	LND. 49-49	
LND. 17-129	LND. 60-109	
LND. 20-19		
LND. 20-27		
LND. 44-141		
LND. 43-151		
LND. 17-189		
LND. 28-131		
LND. 29-81		
LND. 39-44		
LND. 43-9		
		R.S. 70
SOUTHEAST QUARTER		
LND. 3-163		REC. 8-60
LND. 14-135		REC. 10-47
LND. 16-175		
		R.S. 70

*NOTE:
EAST-WEST TIE DISTANCES CALL FOR 1532.1 FEET TO CENTERLINE OF COUNTRY CLUB ROAD, BUT THE DISTANCE ACTUALLY PUTS THIS POINT WEST OF THE WEST RIGHT OF WAY LINE OF THE ROAD, THUS CREATING GAPS IN SURVEYS. NEWER SURVEYS TIE TO N.W. COR. LOT 1, COUNTRY CLUB SUBD., WHICH IS ON THE CENTERLINE. SEE LND. 44-141.



PREPARED BY: MIAMI COUNTY ENGINEER'S MAP DEPARTMENT
PAUL P. HUELSKAMP, P.E., P.S., COUNTY ENGINEER
DATE: DECEMBER 1993
REVISED: June 15, 2021 M2FORMS