

ASHELBY CO.

PLAT NO. L3

MIAMI SHELBY

NOTE: DEEDS MARKED * ARE DEEDS TO THE TRUSTEES OF SPRING CREEK TWP. FOR 20' MEASURED FROM THE E. GEISERMAN ROAD. ALTHOUGH THEY ARE QUIT CLAIM & TRUSTEES DEEDS, WE ARE GOING TO TREAT THEM AS EASEMENTS AS NOT TO NEGATE THE SURVEYS DONE IN THE AREA. ALSO, AUDITOR "OK'ED" - NOT TRANSFERRED DEEDS, ALSO INDICATING EASEMENTS. NO TRANSFERS WERE MADE IN THE AUDITOR'S TRANSFER BOOK.

D. VENTURA
 DEP. ENG.
 9-10-2009

Washington Township
 Sec. 33

Kelly A.
 Earhart, Trustee
 DB 735-481

Robert
 Covault
 DB 701-416

Robert
 2017R-15481

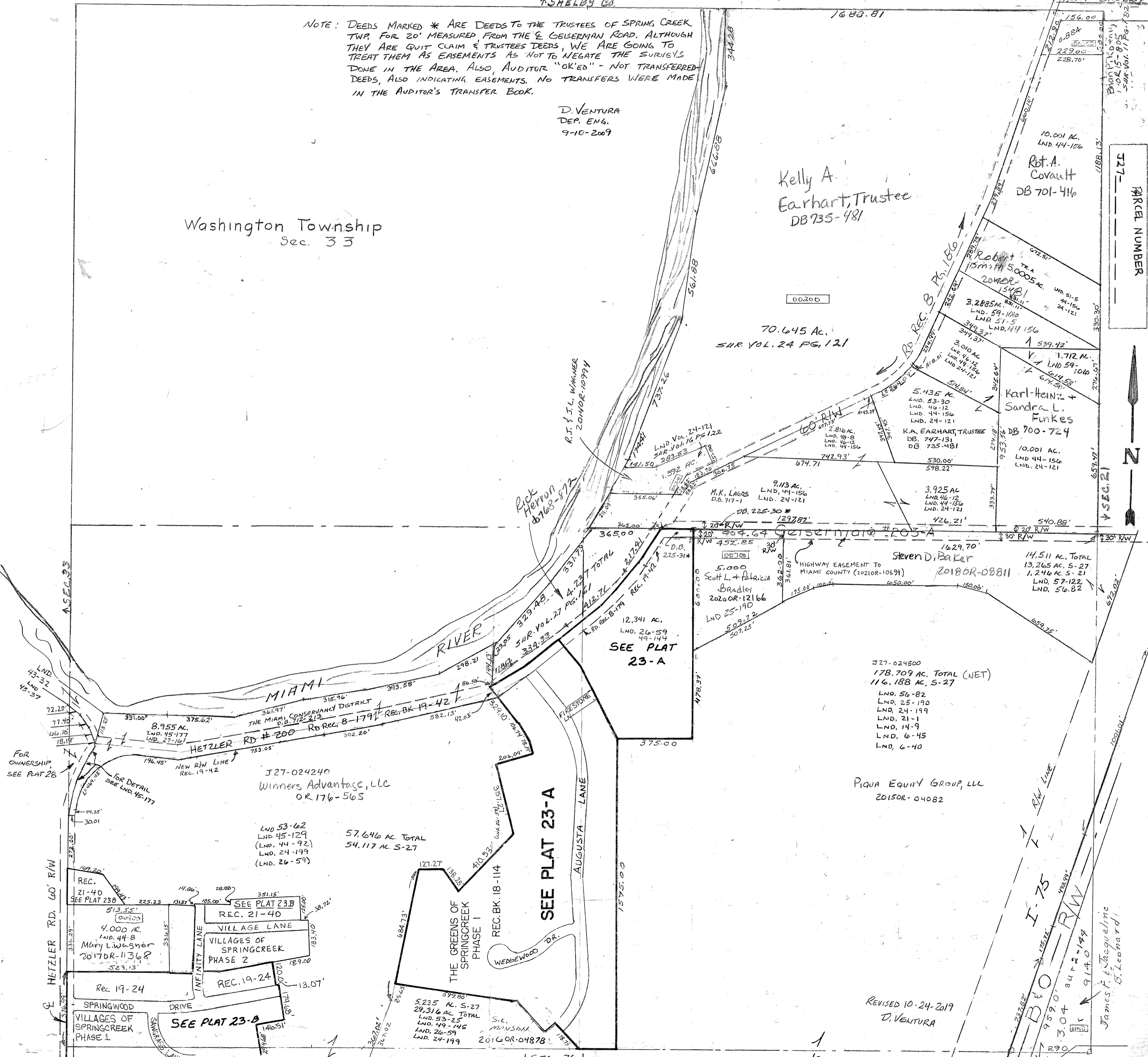
Karl-Heinz +
 Sandra L.
 Funks
 DB 700-724

K.A. EARHART, TRUSTEE
 DB. 747-131
 DB 735-481

10,001 AC.
 LND. 44-156
 LND. 24-121

70.645 AC.
 SUR. VOL. 24 PG. 121

- Surveys -
- Vol. 2 Pg. 144 - SE PT SE
- Vol. 6 Pg. 40 - SCEN PT SE
- Vol. 6 Pg. 45 - SCEN PT SE
- Vol. 9 Pg. 68 - W Cen PT SW
- Vol. 11 Pg. 182 - NE CORNE
- Vol. 14 Pg. 9 - Cen PT SE
- Vol. 16 Pg. 122 - S.W. PT NE.



J27-024240
 Winners Advantage, LLC
 OR 176-565

57.646 AC. TOTAL
 54.117 AC. S-27

J27-024500
 178.709 AC. TOTAL (NET)
 116.188 AC. S-27
 LND. 56-82
 LND. 25-190
 LND. 24-199
 LND. 21-1
 LND. 14-9
 LND. 6-45
 LND. 6-40

PIONA EQUITY GROUP, LLC
 2015OR-04082

REVISED 10-24-2019
 D. VENTURA

James F. Jacquard
 B. Leonard

527- PARCEL NUMBER



1
 2
 3
 4
 5
 6
 7
 8
 9
 10
 11
 12

FOR OWNERSHIP
 SEE PLAT 28

FOR DETAIL
 SEE LND. 45-177

REC. 21-40
 SEE PLAT 23B

SEE PLAT 23B
 REC. 21-40

VILLAGES OF
 SPRINGCREEK
 PHASE 2

REC. 19-24

SEE PLAT 23-B

THE GREENS OF
 SPRINGCREEK
 PHASE 1

5.235 AC. S-27
 29.316 AC. TOTAL
 LND. 53-25
 LND. 49-145
 LND. 26-59
 LND. 24-199

SEE PLAT 23-A

SEE PLAT
 23-A

2017R-15481

Steven D. Baker
 2018OR-08811

M.K. LAGOS
 D.B. 717-1

LND. 24-121
 SUR. VOL. 16 PG. 122

3,288 AC.
 LND. 59-100
 LND. 51-5
 LND. 44-156

3,010 AC.
 LND. 46-12
 LND. 44-156
 LND. 24-121

3,493 AC.
 LND. 51-5
 LND. 44-156

3,288 AC.
 LND. 59-100
 LND. 51-5
 LND. 44-156

10,001 AC.
 LND. 44-156
 LND. 24-121

10,001 AC.
 LND. 44-156
 LND. 24-121

10,001 AC.
 LND. 44-156
 LND. 24-121

10,001 AC.
 LND. 44-156
 LND. 24-121

ASEL33

ASEL33

ASEL33

ASEL33

ASEL33

ASEL33

ASEL33

ASEL33

ASEL33

ASEL33

ASEL33

ASEL33

ASEL33

ASEL33

ASEL33

ASEL33

ASEL33

ASEL33

ASEL33

ASEL33

ASEL33

ASEL33

ASEL33

ASEL33

ASEL33

ASEL33

ASEL33

ASEL33

ASEL33

ASEL33

ASEL33

ASEL33

ASEL33

ASEL33

ASEL33

ASEL33

ASEL33

ASEL33

ASEL33

ASEL33

ASEL33

ASEL33

ASEL33

ASEL33

ASEL33

ASEL33

ASEL33

ASEL33

ASEL33

ASEL33

ASEL33

ASEL33

ASEL33

ASEL33

ASEL33

ASEL33

ASEL33

ASEL33

ASEL33

ASEL33

ASEL33

ASEL33

ASEL33

ASEL33

ASEL33

ASEL33

ASEL33

ASEL33

ASEL33

ASEL33

ASEL33

ASEL33

ASEL33

ASEL33

ASEL33

ASEL33

ASEL33

ASEL33

ASEL33

ASEL33

ASEL33

ASEL33

ASEL33

ASEL33

ASEL33

ASEL33

ASEL33

ASEL33

ASEL33

ASEL33