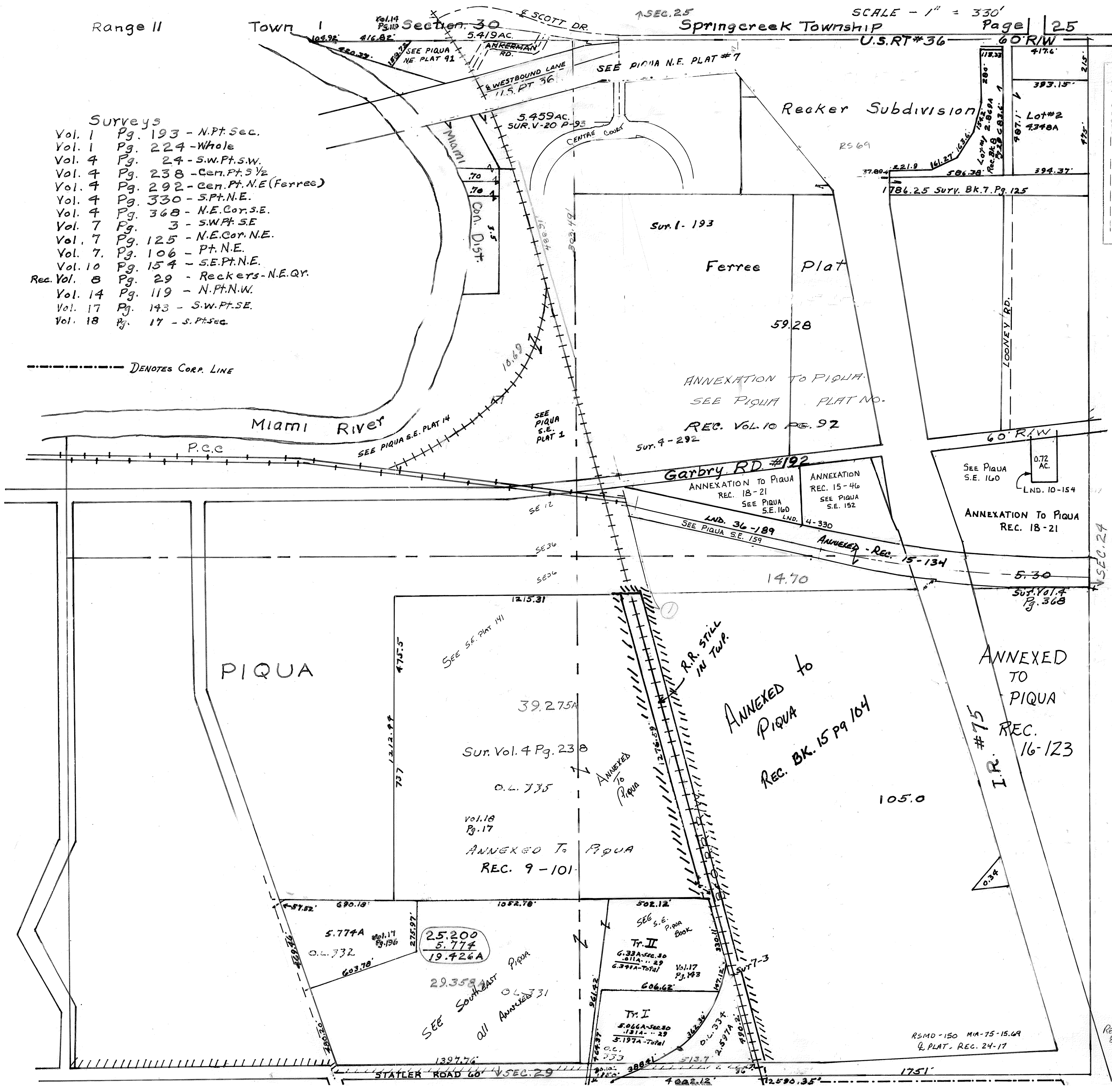


- Surveys**
- Vol. 1 Pg. 193 - N.Pt. Sec.
  - Vol. 1 Pg. 224 - Whole
  - Vol. 4 Pg. 24 - S.W.Pt. S.W.
  - Vol. 4 Pg. 238 - Cen. Pt. S.W.
  - Vol. 4 Pg. 292 - Cen. Pt. N.E. (Ferree)
  - Vol. 4 Pg. 330 - S.Pt. N.E.
  - Vol. 4 Pg. 368 - N.E. Cor. S.E.
  - Vol. 7 Pg. 3 - S.W.Pt. S.E.
  - Vol. 7 Pg. 125 - N.E. Cor. N.E.
  - Vol. 7 Pg. 106 - Pt. N.E.
  - Vol. 10 Pg. 154 - S.E. Pt. N.E.
  - Rec. Vol. 8 Pg. 29 - Reckers - N.E. Qr.
  - Vol. 14 Pg. 119 - N.Pt. N.W.
  - Vol. 17 Pg. 143 - S.W. Pt. S.E.
  - Vol. 18 Pg. 17 - S. Pt. Sec.

--- DENOTES CORP. LINE



SMDA NUMBER  
337-SC045

REVISED  
8-19-2014  
D. VENTURA