

David K. & Susan Lillierap

Bk. # 12 Pg. # 102

91400

75.755 AC. LAND. 40-25

SUR 1-241 2-71

20180R-08301 Piqua Concrete LLC

Henry J. Ernst, Trustee OR 93-477 OR 246-624 2020OR-19213

SUR. Bk. 8 Pg. 126

17.827 AC. LND. 43-175

KAREN A. PEKER DO 721-18 2021OR-11476

PAUL SHERRY & DAVID ARBOGAST D.B. 597-615

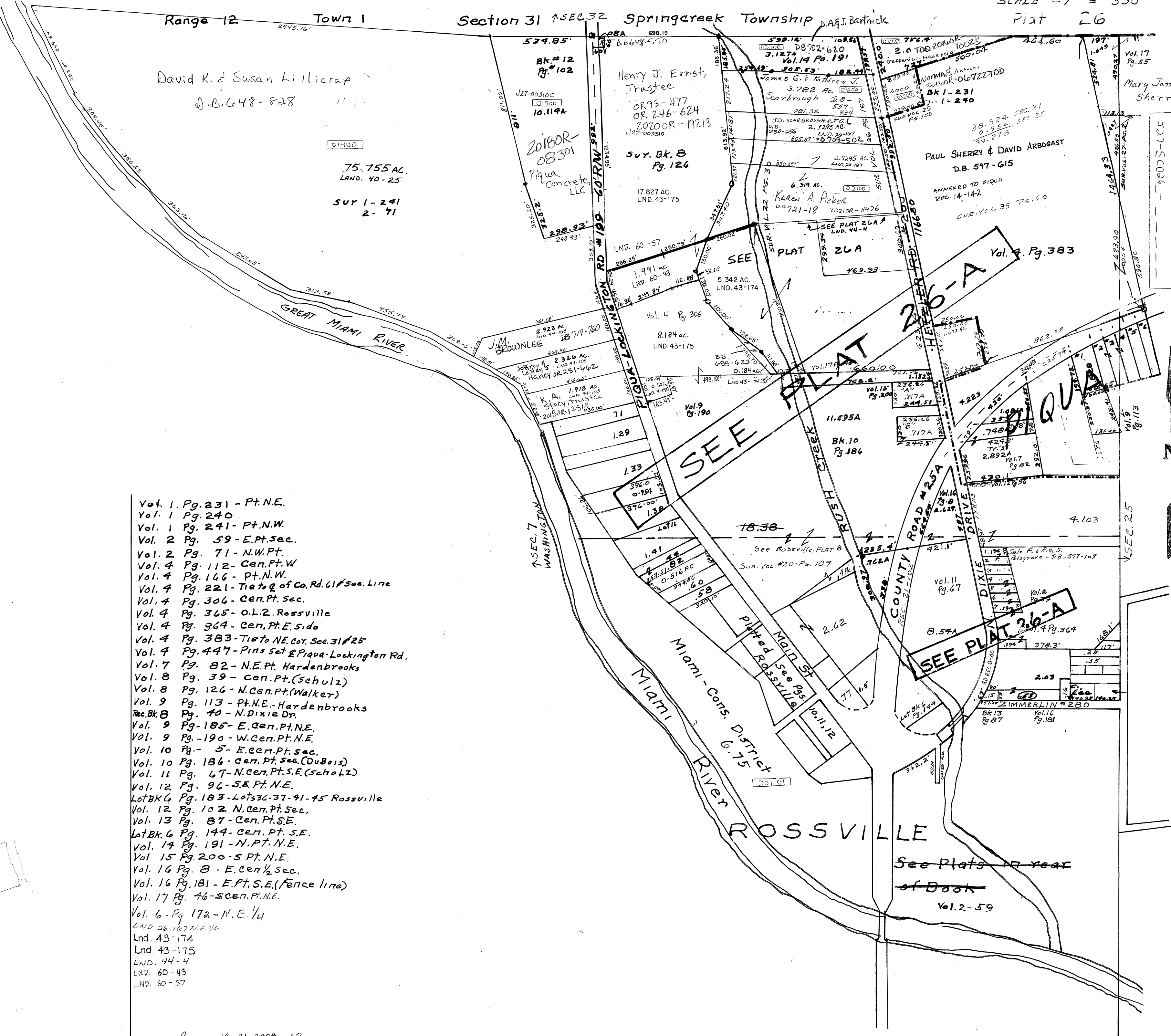
ANNEXED TO PIQUA REC. 14-142

SUR. VOL. 35 PG. 60

Vol. 7, Pg. 383

Mary Jane Sherry

SMOA NUMBER



- Vol. 1 Pg. 231 - Pt. N.E.
- Vol. 1 Pg. 240
- Vol. 1 Pg. 241 - Pt. N.W.
- Vol. 2 Pg. 59 - E. Pt. Sec.
- Vol. 2 Pg. 71 - N.W. Pt.
- Vol. 4 Pg. 112 - Cen. Pt. W
- Vol. 4 Pg. 146 - Pt. N.W.
- Vol. 4 Pg. 221 - Tie to E of Co. Rd. 61 1/2 Sec. Line
- Vol. 4 Pg. 306 - Cen. Pt. Sec.
- Vol. 4 Pg. 365 - O.L.R. Rossville
- Vol. 4 Pg. 364 - Cen. Pt. E. Side
- Vol. 4 Pg. 383 - Tie to NE. cor. Sec. 31 1/2
- Vol. 4 Pg. 447 - Pins Set E Piqua-Lookington Rd.
- Vol. 7 Pg. 82 - N.E. Pt. Hardenbrooks
- Vol. 8 Pg. 39 - Cen. Pt. (Schulz)
- Vol. 8 Pg. 126 - N. Cen. Pt. (Walker)
- Vol. 9 Pg. 113 - Pt. N.E. - Hardenbrooks
- Rec. Bk. 8 Pg. 40 - N. Dixie Dr.
- Vol. 9 Pg. 185 - E. Cen. Pt. N.E.
- Vol. 9 Pg. 190 - W. Cen. Pt. N.E.
- Vol. 10 Pg. 5 - E. Cen. Pt. Sec.
- Vol. 10 Pg. 186 - Cen. Pt. Sec. (DuBois)
- Vol. 11 Pg. 67 - N. Cen. Pt. S.E. (Scholtz)
- Vol. 12 Pg. 96 - S.E. Pt. N.E.
- Lot Bk. 6 Pg. 183 - Lots 36-37-41-45 Rossville
- Vol. 12 Pg. 102 - N. Cen. Pt. Sec.
- Vol. 13 Pg. 87 - Cen. Pt. S.E.
- Lot Bk. 6 Pg. 144 - Cen. Pt. S.E.
- Vol. 14 Pg. 191 - N. Pt. N.E.
- Vol. 15 Pg. 200 - S Pt. N.E.
- Vol. 16 Pg. 8 - E. Cen. Pt. Sec.
- Vol. 16 Pg. 181 - E. Pt. S.E. (Fence line)
- Vol. 17 Pg. 46 - S. Cen. Pt. N.E.
- Vol. 6 - Pg. 17a - N. E. 1/4
- LND 26-167 N.E. 1/4
- Lnd. 43-174
- Lnd. 43-175
- LND. 44-4
- LND. 60-43
- LND. 60-57