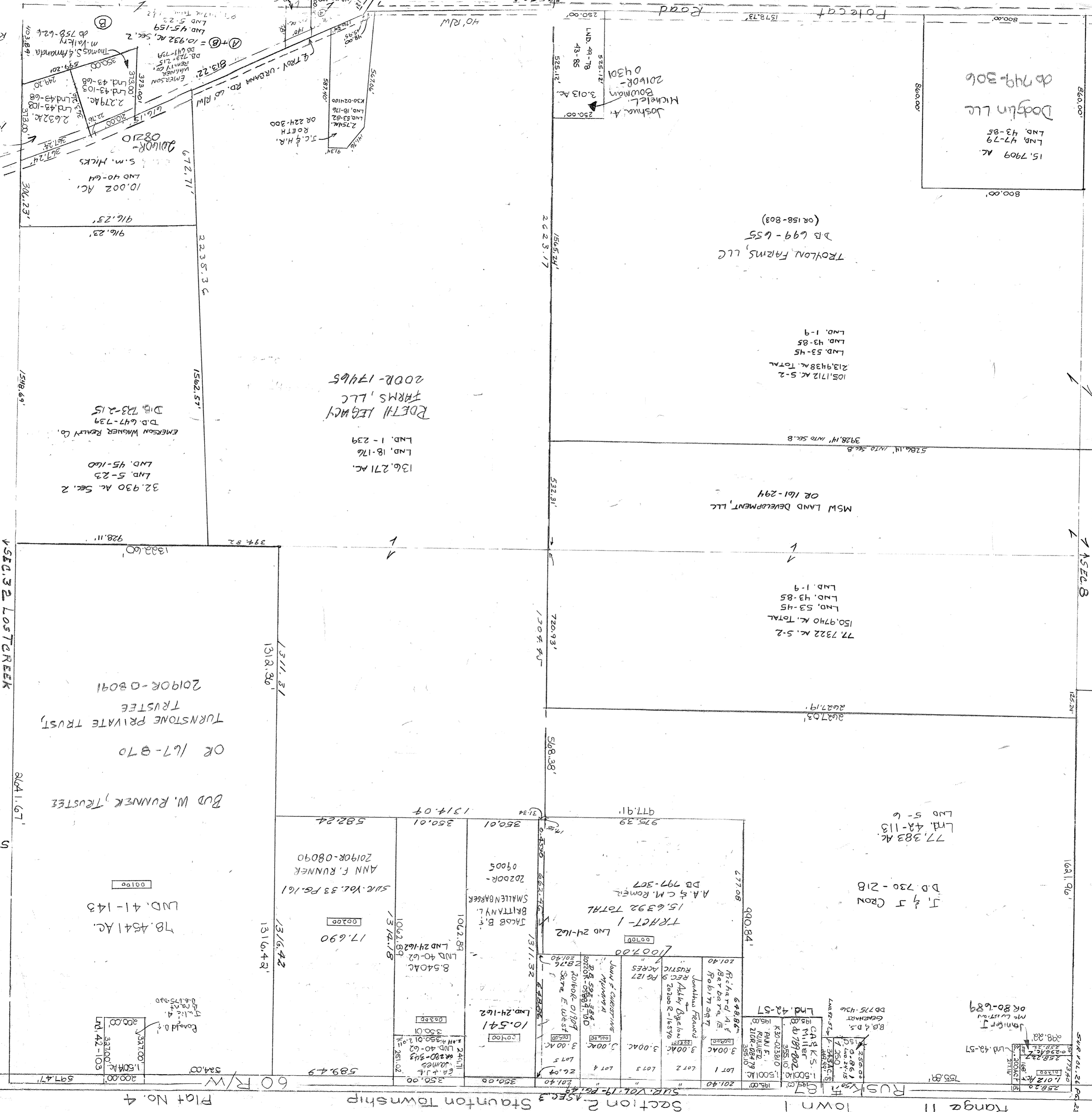


SURVEYS

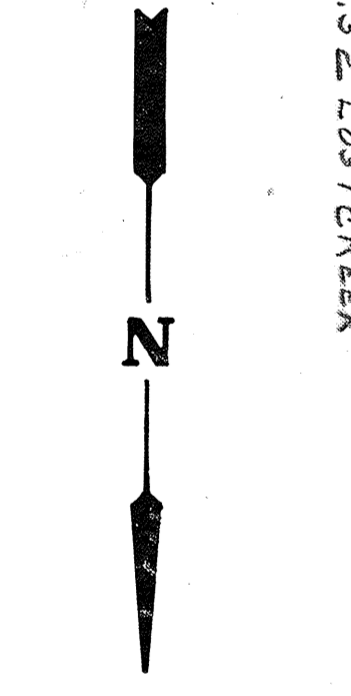
Vol. 1 Pg. 9 - W 1/2 Sec
 Vol. 1 Pg. 239 - SE QTR
 Vol. 5 Pg. 6 - N 1/4 NW
 Vol. 5 Pg. 23 - E Side SE

LND. 40-64 SE 1/4
 LND. 41-143 NE 1/4
 LND. 42-57 NW COR. NW QTR & N. COR. PT. NW QTR.
 LND. 42-103 NE COR. NE QTR.
 LND. 42-113 N. COR. PT. NW QTR.

Lnd. 43-68 SE Pt. SE QTR.
 Lnd. 43-103 SE Pt. SE QTR.
 Lnd. 49-78 SE Pt. SW QTR.



Revised 04/14/2022
 190R-06772
 Teresa Karmel



SCALE - 1" = 330'

PARCEL NUMBER
 K30 -

Plat No. 4