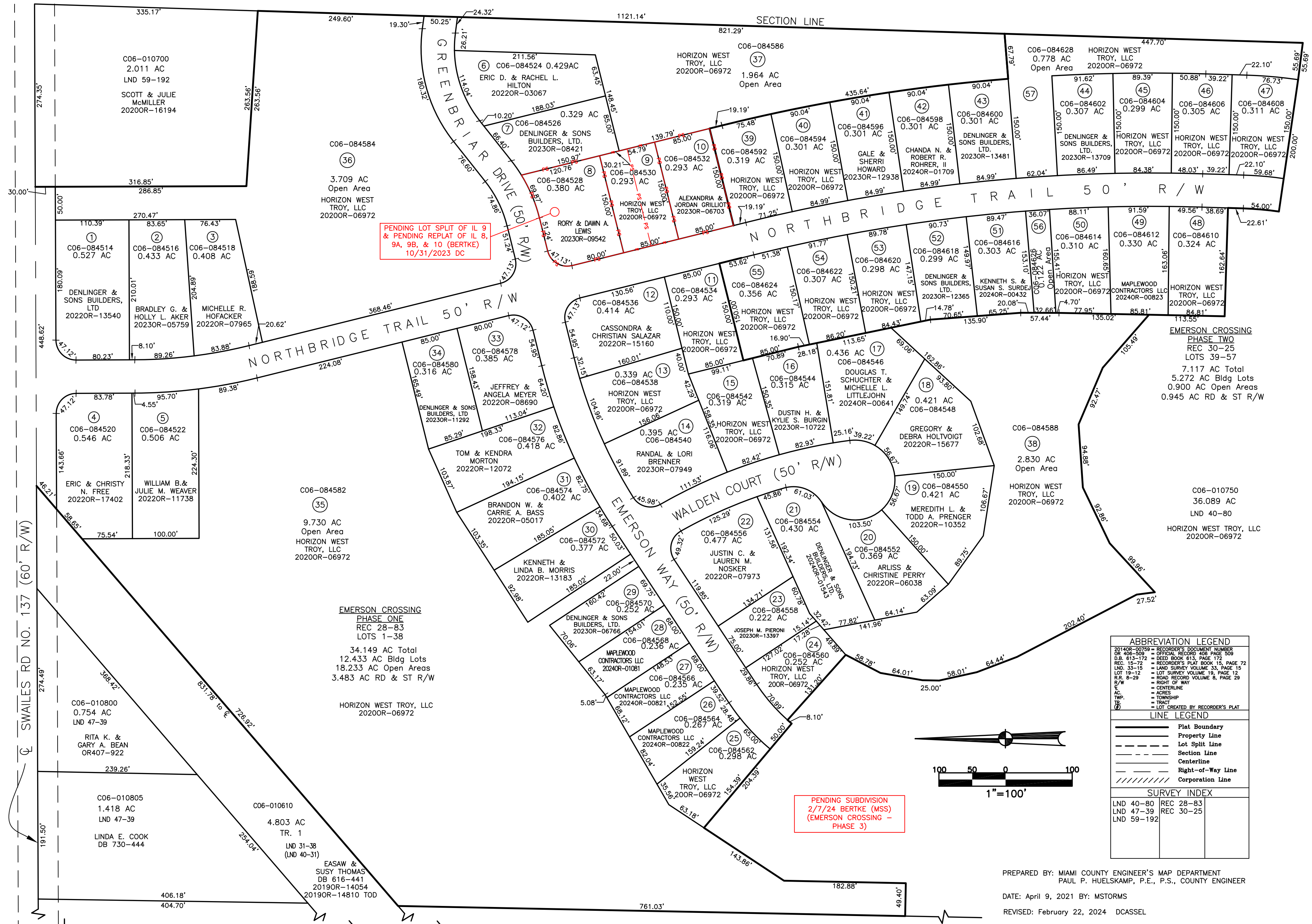


CONCORD TOWNSHIP
MIAMI COUNTY, OHIO

SECTION 6 TOWN 4 RANGE 6
PART of NORTHEAST QUARTER

PARCEL NUMBER
C06-_____

PLAT 9-E



PENDING LOT SPLIT OF IL 9 & PENDING REPLAT OF IL 8, 9A, 9B, & 10 (BERTKE) 10/31/2023 DC

PENDING SUBDIVISION 2/7/24 BERTKE (MSS) (EMERSON CROSSING - PHASE 3)

ABBREVIATION LEGEND	
201406-00759	RECORDER'S DOCUMENT NUMBER
OR 408-509	OFFICIAL RECORD 408 PAGE 509
D.B. 615-172	DEED BOOK 615, PAGE 172
REC. 15-72	RECORDER'S PLAT BOOK 15, PAGE 72
LND. 33-15	LAND SURVEY VOLUME 33, PAGE 15
LOT 19-12	LOT SURVEY VOLUME 19, PAGE 12
R.R. 8-29	ROAD RECORD VOLUME 8, PAGE 29
R/W	RIGHT OF WAY
C	CENTERLINE
A	ACRES
TWP.	TOWNSHIP
TR	TRACT
(C)	LOT CREATED BY RECORDER'S PLAT

LINE LEGEND	
———	Plat Boundary
———	Property Line
- - - - -	Lot Split Line
———	Section Line
———	Centerline
———	Right-of-Way Line
———	Corporation Line

SURVEY INDEX	
LND 40-80	REC 28-83
LND 47-39	REC 30-25
LND 59-192	

PREPARED BY: MIAMI COUNTY ENGINEER'S MAP DEPARTMENT
PAUL P. HUELSKAMP, P.E., P.S., COUNTY ENGINEER
DATE: April 9, 2021 BY: MSTORMS
REVISED: February 22, 2024 DCASSEL