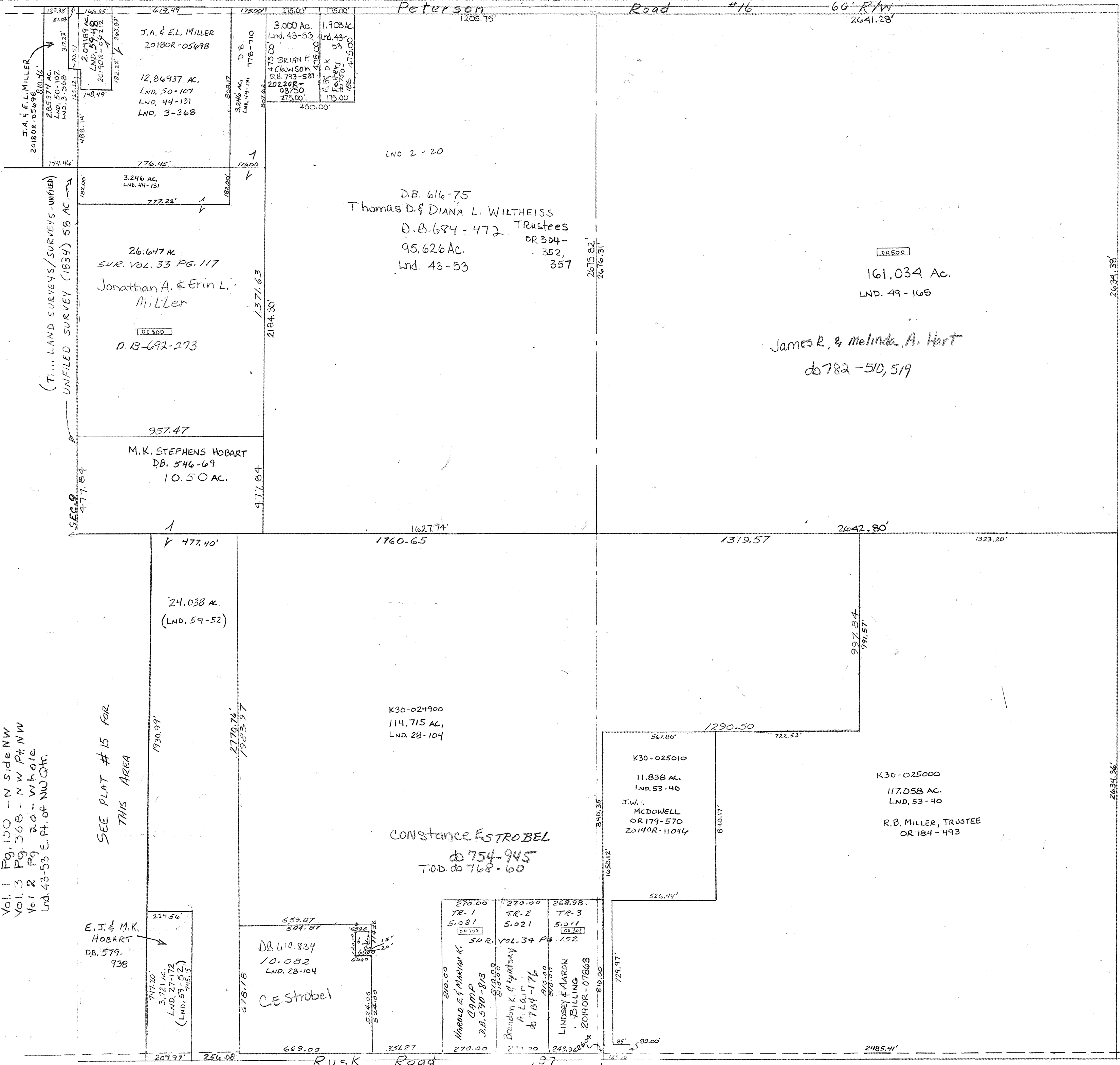


Peterson Road #16

60' R/W  
2641.28'



SMDA NUMBER  
K30-ST04

SCALE - 1" = 330'



V SEC. 33 Lost Creek

SURVEYS  
 Vol. 1 Pg. 150 - N side NW  
 Vol. 3 Pg. 368 - NW Pt NW  
 Vol. 2 Pg. 20 - whole  
 Lnd. 43-53 E. Pt. of NW Qtr.

SEE PLAT # 15 FOR  
 THIS AREA

REVISED  
 3/10/22  
 ADP