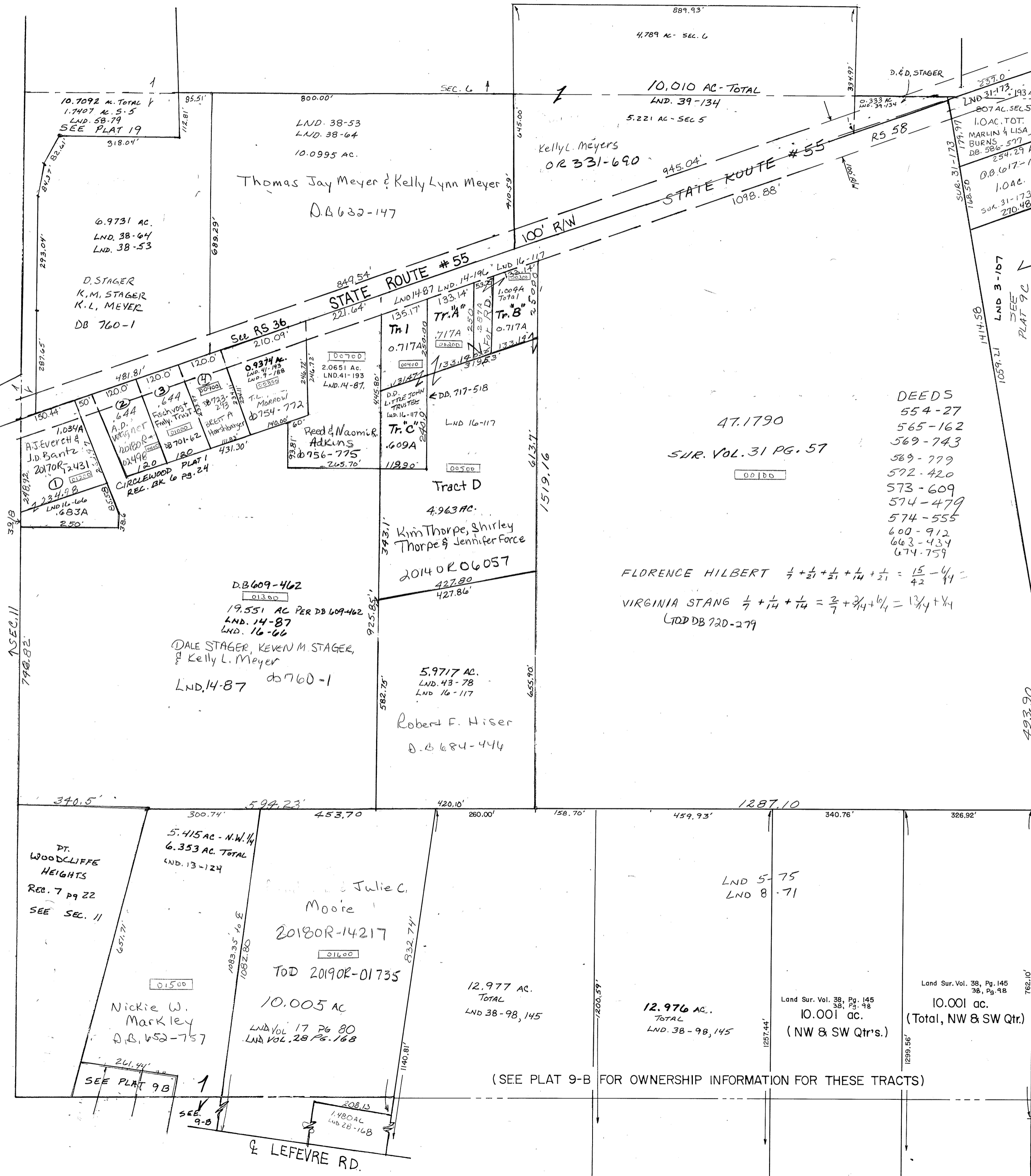


N.W. QR SECTION

SMDA NUMBER  
K30-ST009A-

SCALE - 1" = 200'



- SURVEYS**
- Vol 2 Pg 37 - S Pt of Sec
  - 3 " 49 - NE Pt. SE
  - 3 " 75 - Pt. E Line - @ Sayers Rd.
  - 3 " 107 - NW, Cor. NE.
  - 5 " 75 - S. Cen. Pt. NW, & N. Cen. Pt. SW.
  - 5 " 129 - SW. Cor. NW.
  - 5 " 145 - SE. Pt. SE.
  - 7 " 184 - S. Cen. Pt. NE.
  - 8 " 71 - Cen. Pt. Sec. -
  - 8 " 118 - NW. Cor. SE.
  - 9 " 188 - Cen. Pt. NW.
  - 10 " 14 - NW. Cor. SW.
  - 10 " 9 - Cen. Pt. S 1/2
  - SubDN 1 " 40 - N. Pt. SW.
  - 1 " 66 - SW. Cor. NW.
  - Vol 13 " 69 - N. Cen. Pt. SE.
  - 14 " 1 - Cen. W. Side SW.
  - 14 " 43 - Cen. Pt. SW.
  - 14 " 87 - Cen. Pt. W. Side NW.
  - R.S. 8 " 28 - N. Cen. Pt. SW.
  - Vol 14 " 136 - E. Cen. Pt. SW.
  - Sub Div. 1 " 3 - Cen. Pt. W. Side NW.
  - 9 " 191 - Cen. Pt. SE.
  - LND 38 pg 53 N. pt NW 1/4
  - LND 38 - 64 N. PART N.W. 1/4
  - LND. 41-193 - NW PT. NW QTR.
  - LND. 43-78
  - LND 58-79
- DEEDS**
- 554-27
  - 565-162
  - 569-743
  - 589-779
  - 572-420
  - 573-609
  - 574-479
  - 574-555
  - 600-912
  - 663-434
  - 674-759
- Equations:**
- FLORENCE HILBERT  $\frac{1}{2} + \frac{1}{21} + \frac{1}{21} + \frac{1}{14} + \frac{1}{21} = \frac{15}{42} + \frac{4}{42} = \frac{19}{42}$
  - VIRGINIA STANG  $\frac{1}{2} + \frac{1}{14} + \frac{1}{14} = \frac{2}{7} + \frac{3}{14} + \frac{1}{14} = \frac{13}{14} + \frac{1}{14} = \frac{14}{14} = 1$



(SEE PLAT 9-B FOR OWNERSHIP INFORMATION FOR THESE TRACTS)