

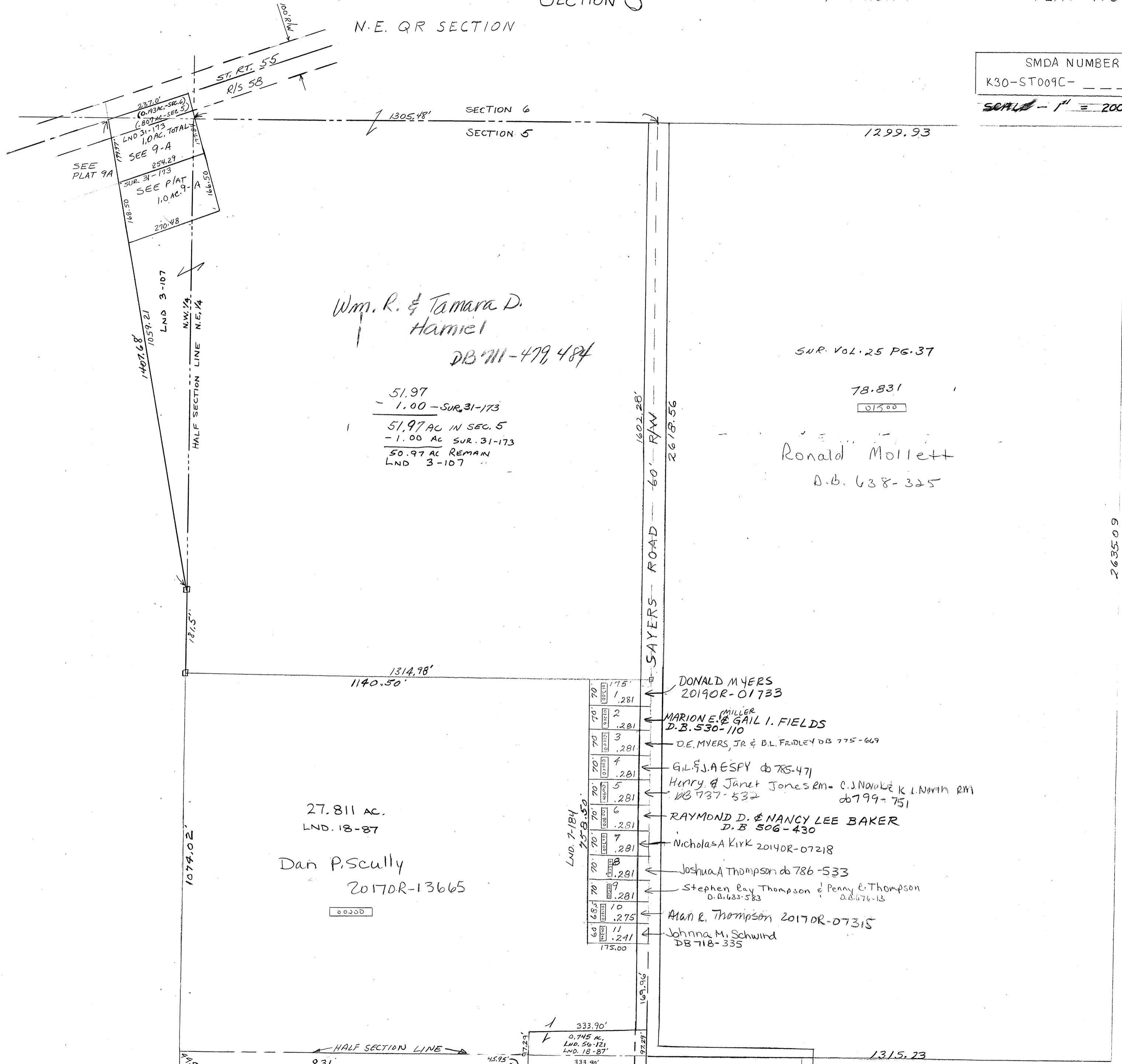
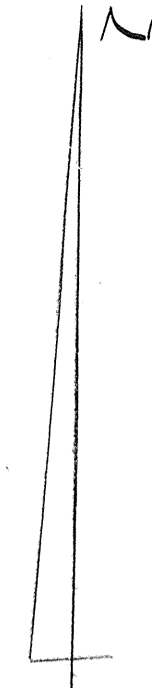
N.E. QR SECTION

SEC. 5

N.E. 1/4

SMDA NUMBER  
K30-ST009C-

SCALE - 1" = 200'



SEE PLAT 9A  
LND 31-173  
1.0 AC. TOTAL  
SEE 9-A  
254.29  
SUR. 31-173  
SEE PLAT  
1.0 AC. 9-A  
166.50  
270.48

Wm. R. & Tamara D.  
Hamiel  
DB 711-479, 484

51.97  
- 1.00 - SUR. 31-173  
51.97 AC IN SEC. 5  
- 1.00 AC SUR. 31-173  
50.97 AC REMAIN  
LND 3-107

SUR. VOL. 25 PG. 37

78.831  
01500

Ronald Mollett  
D.B. 638-325

27.811 AC.  
LND. 18-87  
Dan P. Scully  
20170R-13665  
00200

- 175' 1.281 DONALD MYERS 20190R-01733
- 70' 2 .281 MARION E. & GAIL I. FIELDS D.B. 530-110
- 70' 3 .281 D.E. MYERS, JR & B.L. FRIDLEY DB 775-669
- 70' 4 .281 GIL E. A. ESPY db 785-471
- 70' 5 .281 Harry & Janet Jones RM - C.J. NAWKE & K.L. NORTH RM db 737-532 db 799-751
- 70' 6 .281 RAYMOND D. & NANCY LEE BAKER D.B. 506-430
- 70' 7 .281 Nicholas A Kirk 20140R-07218
- 70' 8 .281 Joshua A Thompson db 786-533
- 70' 9 .281 Stephen Ray Thompson & Penny E. Thompson D.B. 633-583 db 676-13
- 68.5' 10 .275 Alan R. Thompson 20170R-07315
- 60' 11 .241 Johanna M. Schwind DB 718-335

2635.09  
SEC. 35 ELIZABETH