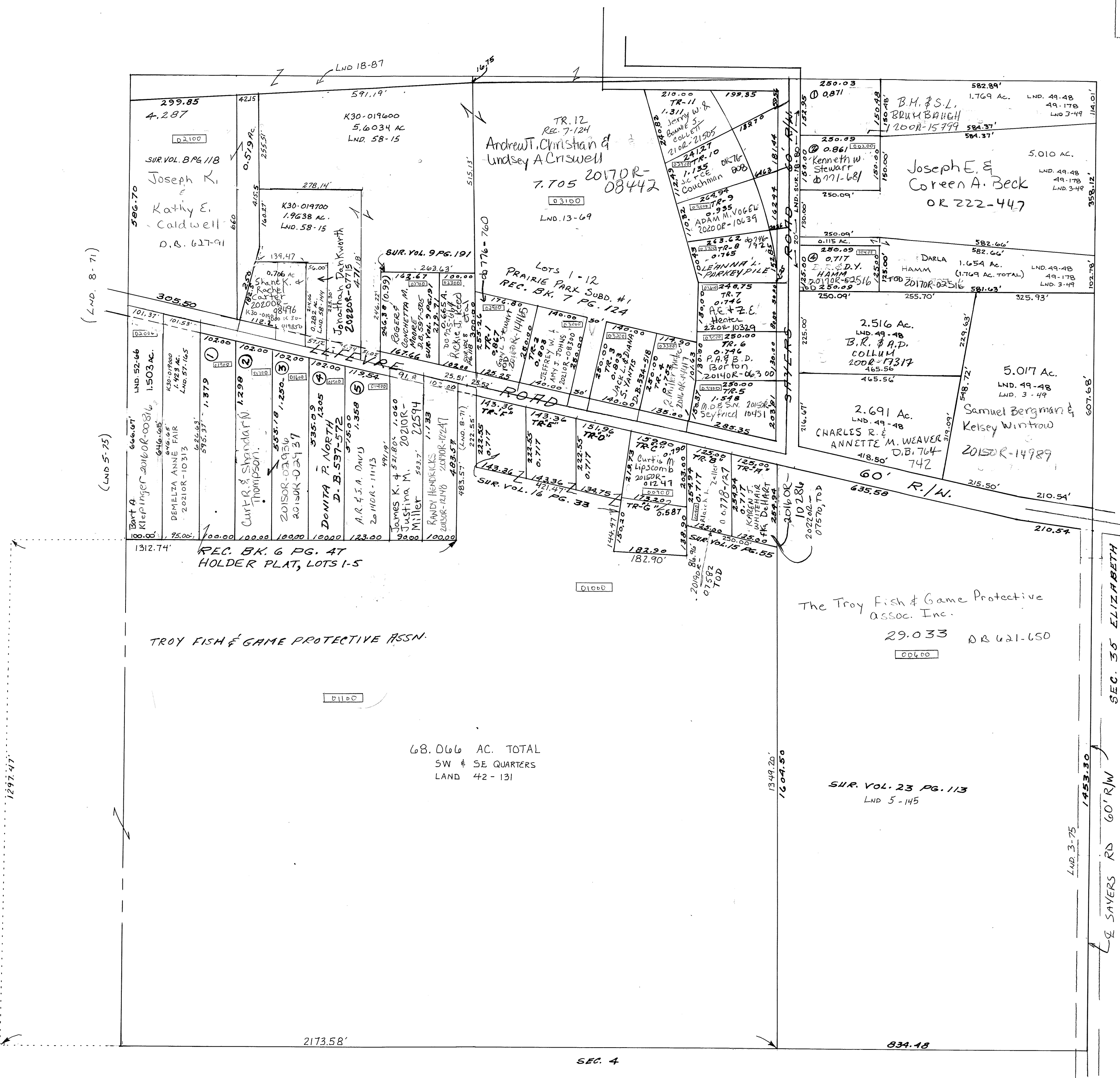


PARCEL NUMBER
K30- _____



1297.47'

(LND. 8-71)

(LND. 5-73)

299.85
4.287
0.2100
SUR. VOL. BPG 118
Joseph K.
Kathy E.
Caldwell
D.B. 627-91

LND 18-87
591.19'
K30-019600
5.6034 AC
LND. 58-15

TR. 12
REC. 7-124
Andrew T. Christian &
Lindsey A. Criswell
7.705 2017OR-
08442
0.3100
LND. 13-69

250.03
0.871
B.H. & S.L.
BRUMBAUGH
1200R-15799
584.37'
5.010 AC.
LND. 49-48
49-178
LND. 3-49

250.09
0.861
Kenneth W.
Stewart
1771-681
250.09'
250.09'
0.115 AC.
250.09
0.717
DARLA
HAMM
1.654 AC.
LND. 49-48
49-178
LND. 3-49
582.66'
582.66'
2.516 AC.
LND. 49-48
B.R. & A.P.
COLLUM
200R-17317
465.56'
2.691 AC.
LND. 49-48
CHARLES R. &
ANNETTE M. WEAVER
O.B. 764-
742
5.017 AC.
LND. 49-48
LND. 3-49
Samuel Bergman &
Kelsey Wintrow
2015OR-14989

1312.74'
REC. BK. 6 PG. 47
HOLDER PLAT, LOTS 1-5

TROY FISH & GAME PROTECTIVE ASSN.

68.066 AC. TOTAL
SW & SE QUARTERS
LAND 42-131

The Troy Fish & Game Protective
Assoc. Inc.
29.033 OR 621-650
0.0400

SUR. VOL. 23 PG. 113
LND 5-145

SEC. 35 ELIZABETH

60' R/W
LND. 3-75
1453.30
L& SAVERS RD 60' R/W