

RANGE II

TOWN I

SECTION 10

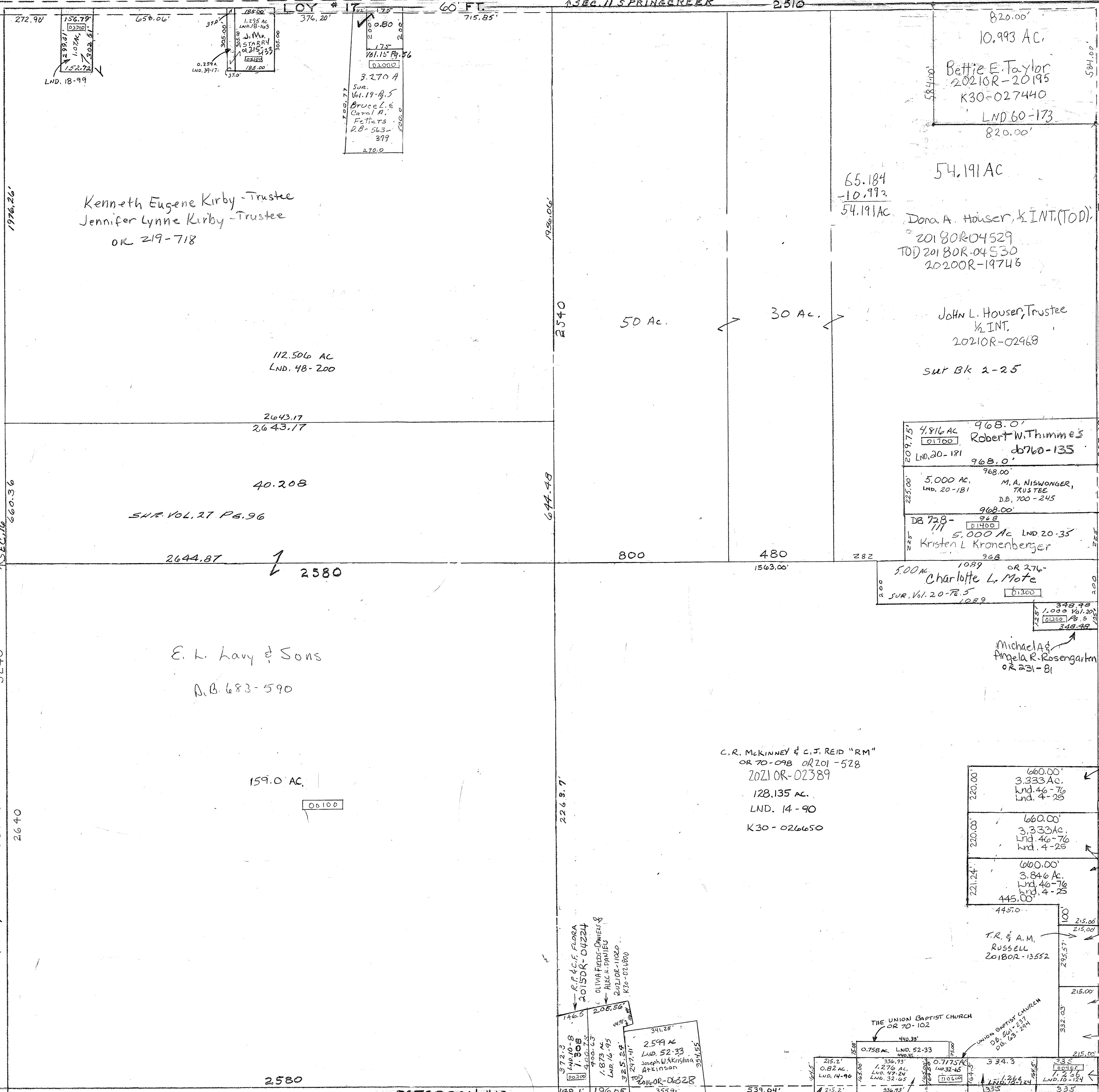
STAUNTON TOWNSHIP

PLAT NO. 18

60 FT.

1/4 SEC. 11 SPRINGCREEK 2.510

Vol. 13 - Pg. 169 - SE 1/4 PT. S.E.
 Vol. 14 - Pg. 90 - SE 1/4 QTR.
 Vol. 15 - Pg. 54 - S.E. 1/4 N.W.
 Vol. 16 - Pg. 95 - S.W. 1/4 S.E.
 Vol. 20 - Pg. 35 - S.E. COR. N.E.
 2-25-EK-NE
 VOL. 4-25-E-Cor-SE
 10-8-SW-Cor-SE
 10-124-SE-Cor-SE



SMDA NUMBER K30-ST018

SCALE - 1" = 330'

UNION SHELBY

REVISED 12.12.08.21

Kenneth Eugene Kirby - Trustee
Jennifer Lynne Kirby - Trustee
OR 219-718

112.506 AC
LND. 48-200

2643.17
2643.17

40.208

SUR VOL. 27 PG. 96

2644.87

2580

E. L. Lavy & Sons
A.B. 683-590

159.0 AC

00100

C.R. MCKINNEY & C.J. REID "RM"
OR 70-098 OR 201-528
2021OR-02389
128.135 AC.
LND. 14-90
K30-026650

JEREMY & KATHARINE HOWARD
2020OR-09503

Richard L. & Mya L. Manns
2019OR-10968

Nicole & Adam G. Sluss
2022OR-01524

K30-027200
4.459 AC.
LND. 58-184
LND. 46-76
LND. 13-164

1.636 AC.
LND. 58-184
LND. 46-76
LND. 13-164
B. & D. HEWLETT
2020OR-00386

Travis L. & Amanda
2020OR-11357

PETERSON #16

60' R/W

SEC. 9

M.A. & C. DEAL
D.B. 541-535

UNION BAPTIST CHURCH
D.B. 720-244
D.B. 722-548

KEVIN M. VORE
2019OR-00950