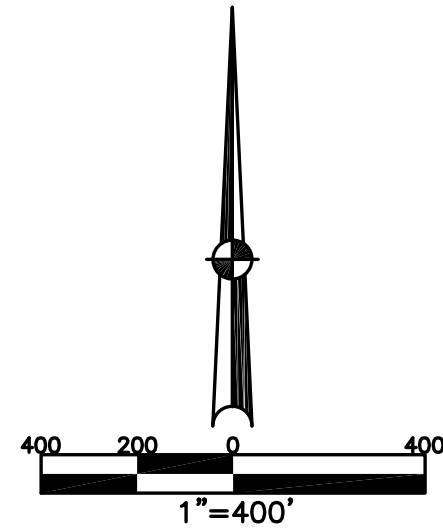


# STAUNTON TOWNSHIP MIAMI COUNTY, OHIO

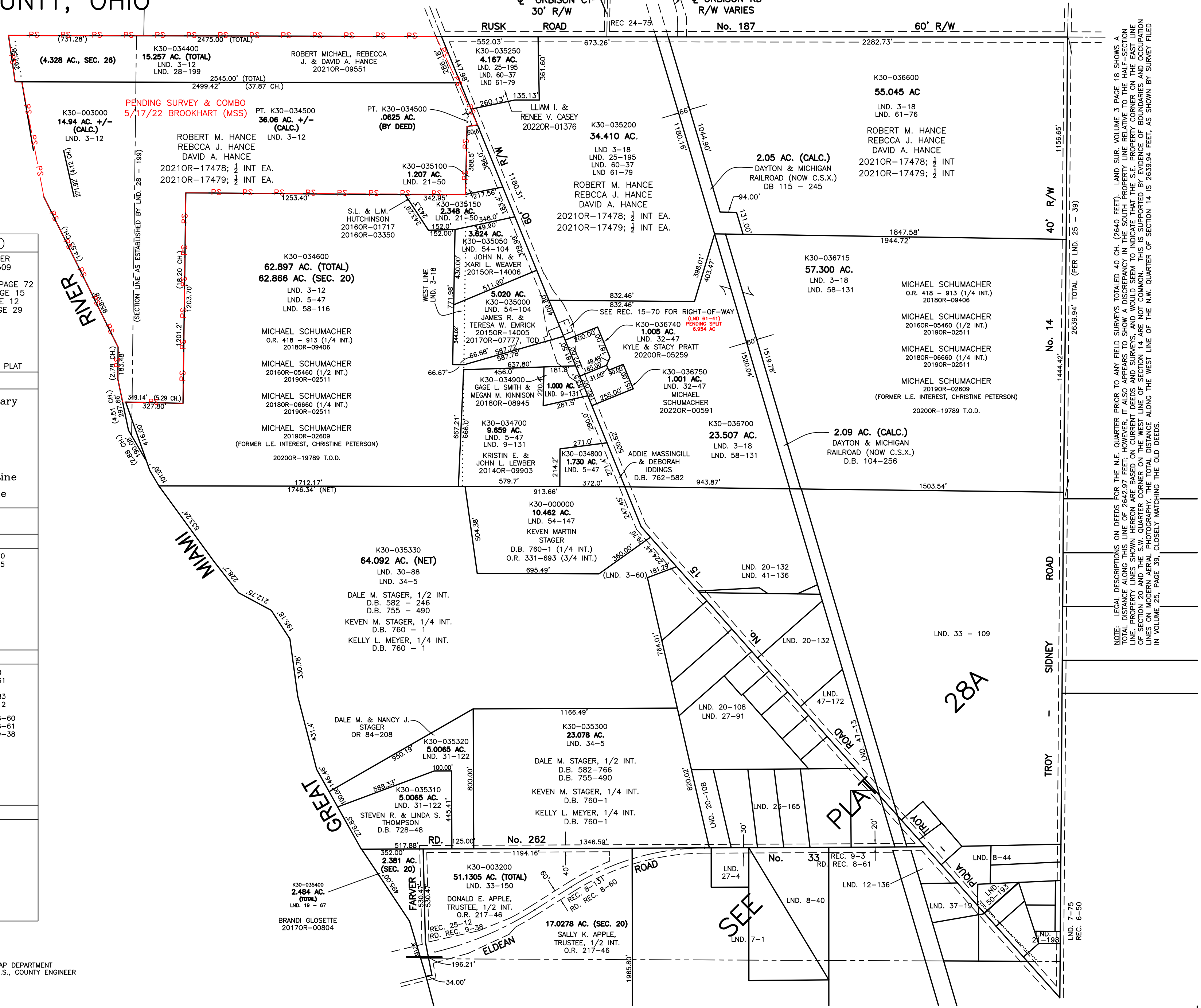
## SECTIONS 20 & 26 TOWN 1 RANGE 11

PARCEL NUMBER  
K30-XXXXXX

## PLAT 28



ABBREVIATION LEGEND		
2014OR-07759	=	RECORDER'S DOCUMENT NUMBER
OR 406-509	=	OFFICIAL RECORD 406 PAGE 509
D.B. 613-172	=	DEED BOOK 613, PAGE 172
REC. 15-72	=	RECORDER'S PLAT BOOK 15, PAGE 72
LND. 33-15	=	LAND SURVEY VOLUME 33, PAGE 15
LOT 19-12	=	LOT SURVEY VOLUME 19, PAGE 12
R.R. 8-29	=	ROAD RECORD VOLUME 8, PAGE 29
R/W	=	RIGHT OF WAY
CL	=	CENTERLINE
AC.	=	ACRES
TWP.	=	TOWNSHIP
TR.	=	TRACT
②	=	LOT CREATED BY RECORDER'S PLAT
LINE LEGEND		
	=	Blow-up Boundary
	=	Property Line
	=	Lot Split Line
	=	Section Line
	=	Centerline
	=	Right-of-Way Line
	=	Corporation Line
SURVEY INDEX		
NORTH HALF SECTION 20		
LND. 3-12	LND. 60-37	REC. 15-70
LND. 3-18	LND. 61-76	REC. 24-75
LND. 5-47		
LND. 9-131		
LND. 21-50		
LND. 25-95		
LND. 28-199		
LND. 32-47		
LND. 54-104		
LND. 58-116		
LND. 58-131		
SOUTH HALF SECTION 20		
LND. 1-173	LND. 30-88	REC. 6-50
LND. 3-60	LND. 31-122	REC. 8-131
LND. 7-1	LND. 33-109	REC. 9-3
LND. 7-75	LND. 33-150	REC. 24-83
LND. 8-40	LND. 34-5	REC. 25-12
LND. 8-44	LND. 34-19	
LND. 12-136	LND. 41-136	RD REC. 8-60
LND. 19-67	LND. 44-72	RD REC. 8-61
LND. 20-108	LND. 47-13	RD REC. 8-61
LND. 20-132	LND. 47-172	
LND. 21-198	LND. 50-193	
LND. 26-165	LND. 54-147	
LND. 27-4		
LND. 27-91		
SECTION 26		
LND. 3-12		
LND. 5-47		
LND. 28-199		
LND. 58-116		



NOTE: LEGAL DESCRIPTIONS ON DEEDS FOR THE N.E. QUARTER PRIOR TO ANY FIELD SURVEYS TOTALLED 40 CH. (6640 FEET). LAND SUR. VOLUME 3, PAGE 18 SHOWS A TOTAL DISTANCE OF 39 CH. (6240 FEET). HOWEVER, IT APPEARS TO SHOW A DISCREPANCY IN THE SOUTH PROPERTY LINE RELATIVE TO THE HALF-SECTION LINE. PROPERTY LINES SHOWN HEREON ARE BASED ON CURRENT DEEDS AND SURVEYS, AND WOULD SEEM TO INDICATE THAT THE S.E. PROPERTY CORNER ON THE EAST LINE OF SECTION 20 AND THE S.W. QUARTER CORNER ON THE WEST LINE OF SECTION 14 ARE NOT COMMON. THIS IS SUPPORTED BY EVIDENCE OF BOUNDARIES AND OCCUPATION LINES ON MODERN AERIAL PHOTOGRAPHY. THE TOTAL DISTANCE ALONG THE WEST LINE OF SECTION 14 IS 2639.94 FEET, AS SHOWN BY SURVEY FILED IN VOLUME 25, PAGE 39, CLOSELY MATCHING THE OLD DEEDS.