

RANGE 11

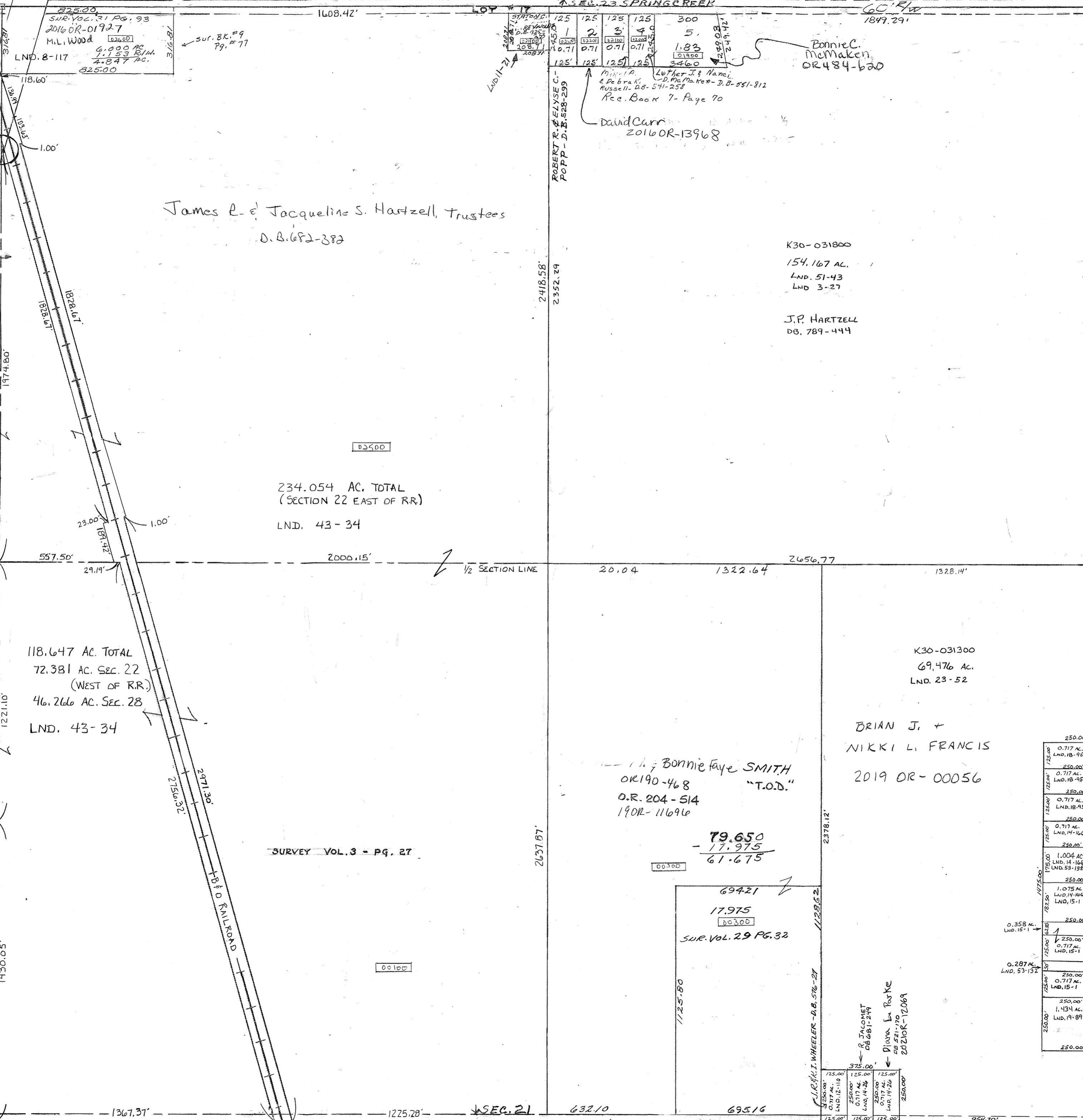
TOWN 1

SECTION 22

TOWNSHIP

PLAT NO. 30

TOTAL 630.19 A



SUR. BK. # 8  
Pg. # 168  
DITCH RELOCATION  
EASEMENT

Sub Div. BK. 1 - Pg. 100 NW Cor NE  
Vol. 15 Pg. 1 - E. Pt. S.E.  
Vol. 18 Pg. 95 - E. Pt. S.E.

Vol. 11 - Pg. 21 - NE. Cor. NW  
12 110' S. Cen. Pt. S.E.  
14 26' S. Cen. Pt. S.E.  
14 166' E. Cen. Pt. S.E.

Vol. 3 - 27 - Whole NW  
8-117 - NW. Cor. NW  
8-189 - Ditch Easement  
9-77 - NW. Cor. NW

James E. & Jacqueline S. Hartzell, Trustees  
D.B. 682-382

234.054 AC. TOTAL  
(SECTION 22 EAST OF RR.)  
LND. 43-34

118.647 AC. TOTAL  
72.381 AC. SEC. 22  
(WEST OF RR.)  
46.266 AC. SEC. 28  
LND. 43-34

Bonnie Faye SMITH  
OR 190-468  
O.R. 204-514  
190R-11696  
"T.O.D."

79.650  
- 17.975  
61.675

BRIAN J. +  
NIKKI L. FRANCIS  
2019 OR-00056

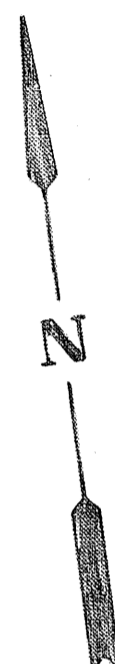
K30-031800  
154.167 AC.  
LND. 51-43  
LND 3-27

J.P. HARTZELL  
DB. 789-444

K30-031300  
69.476 AC.  
LND. 23-52

SCALE - 1" = 330'

SMDA NUMBER  
K30-ST030



SEC. 14  
E. TROY-SIDNEY RD #14 40' RW

- Michael J. + Rachel L. Grunloh  
20210R-06608
- Jennifer Bennett  
2019R-11978
- A.M. TILTON  
DB 531-451
- James A. Gordon, Jr.  
08117-14; OR 259-437  
20210R-07078
- JEREMY B. JOSEFOVSKY  
D.B. 738-619  
O.R. 208-628  
2019OR-10815  
2019OR-12472-TOD
- M.E. & L.A. PHILLIPS  
OR-156-604
- G.S. & M.K. STOLTZ  
OR 67-933
- G.S. & M.K. STOLTZ  
OR 208-630
- J.M. BROWN  
OR 428-144
- B.J. GROVES  
2016 OR-13325

REVISED  
7-13-21  
APMer