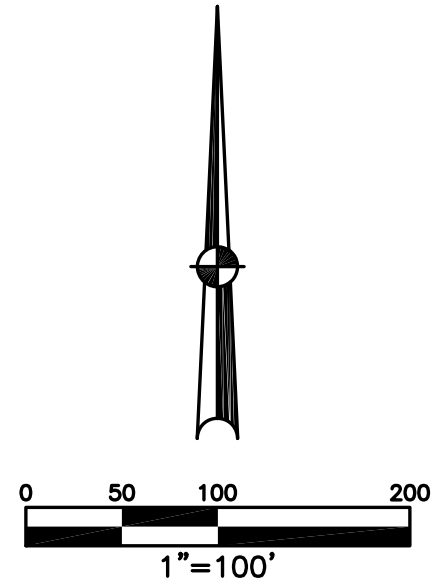


SECTION 8
TOWN 4
RANGE 6

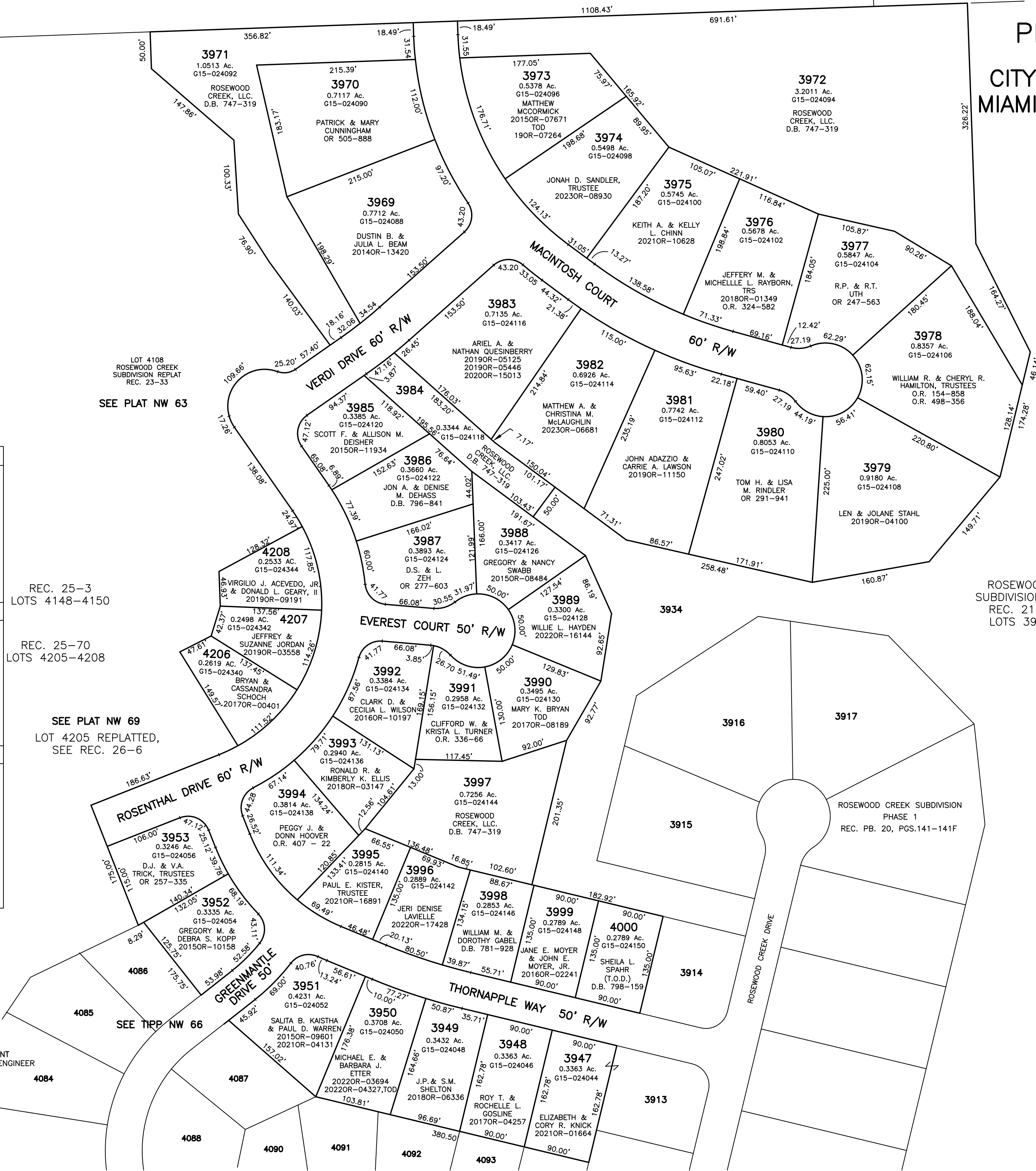
PLAT NW 67
CITY OF TIPP CITY
MIAMI COUNTY, OHIO



ABBREVIATION LEGEND	
2014OR-07759	= RECORDER'S DOCUMENT NUMBER
G15-024070	= AUDITOR'S PARCEL ID NUMBER
OR 406-509	= OFFICIAL RECORD 406 PAGE 509
D.B. 613-172	= DEED BOOK 613, PAGE 172
REC. 15-72	= RECORDER'S PLAT BOOK 15, PAGE 72
LND. 33-15	= LAND SURVEY VOLUME 33, PAGE 15
LOT 19-12	= LOT SURVEY VOLUME 19, PAGE 12
R.R. 8-29	= ROAD RECORD VOLUME 8, PAGE 29
R/W	= RIGHT OF WAY
C	= CENTERLINE
AC.	= ACRES
TWP.	= TOWNSHIP
TR.	= TRACT
IL	= INLOT

LINE LEGEND	
	Blow-up Boundary
	Property Line
	Lot Split Line
	Section Line
	Centerline
	Right-of-Way Line
	Corporation Line

SURVEY INDEX	
ROSEWOOD CREEK SUBDIVISION, PHASE 2 REC. 21-29-29D LOTS 3947-4000	ANNEXATION REC. 19-118 LOT 3603 (REC. 23-25)
ROSEWOOD CREEK SUBDIVISION REPLAT REC. 23-33 LOT 4108	REPLAT OF INLOTS 4148-4150, PT. IL. 4108 REC. 25-3 LOTS 4148-4150
REPLAT PART INLOT 4108 REC. 25-3 LOTS 4148-4150	REPLAT OF INLOTS 4148-4150, PT. IL. 4108 REC. 25-70 LOTS 4205-4208



LOT 4108
ROSEWOOD CREEK
SUBDIVISION REPLAT
REC. 23-33
SEE PLAT NW 63

REC. 25-3
LOTS 4148-4150

REC. 25-70
LOTS 4205-4208

SEE PLAT NW 69
LOT 4205 REPLATTED,
SEE REC. 26-6

SEE TIPP NW 66

3934

ROSEWOOD CREEK
SUBDIVISION, PHASE 2
REC. 21-29-29D
LOTS 3947-4000

PREPARED BY: MIAMI COUNTY ENGINEER'S MAP DEPARTMENT
PAUL P. HUELSKAMP P.E., P.S., COUNTY ENGINEER
DATE: AUGUST 7, 2007 DGS
REVISED: August 17, 2023 DCASSEL