

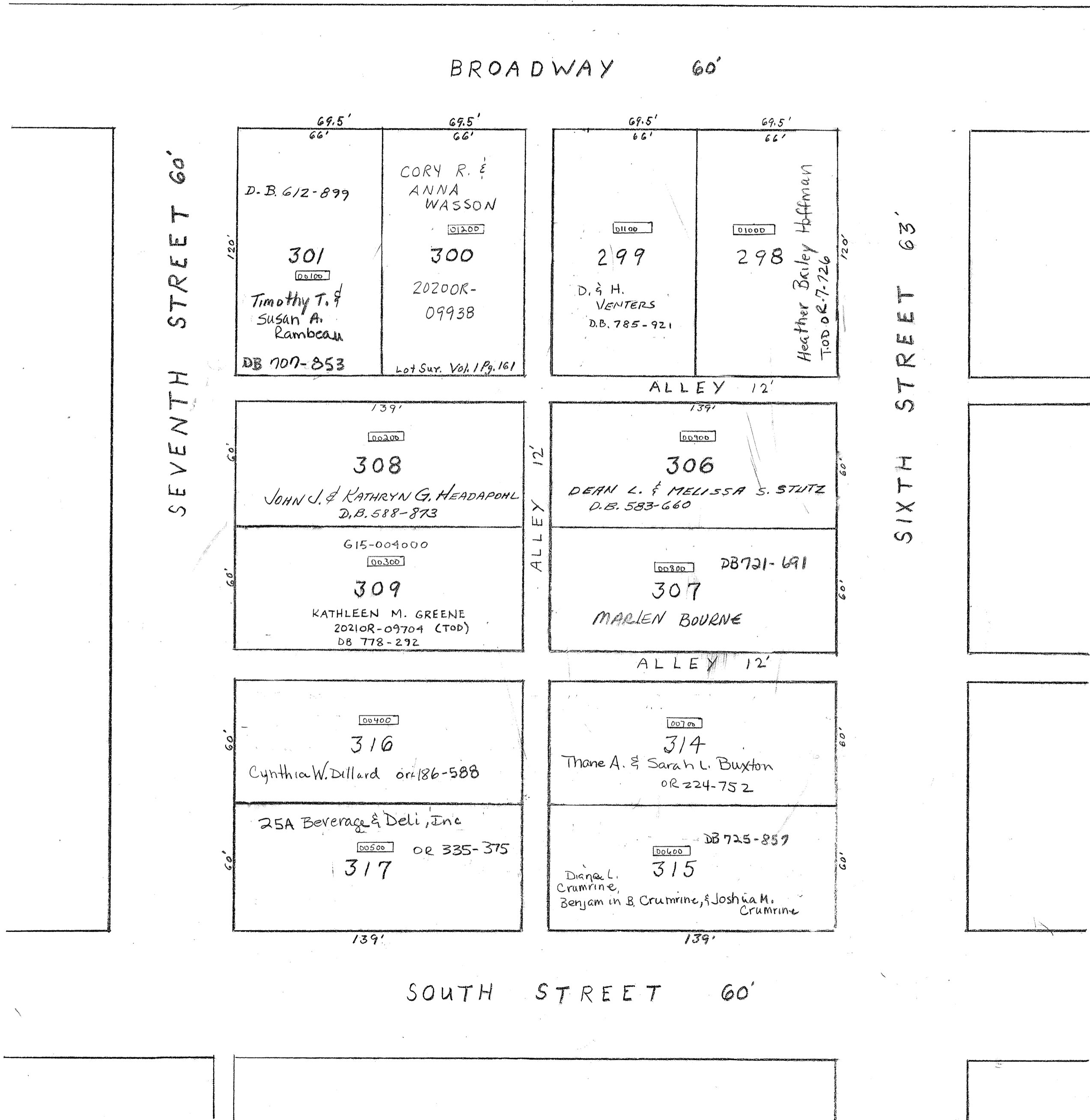
Tipp City

S.E.

PLAT NO 18

Scale 1-Inch 40 Feet

PARCEL	NUMBER
615-	-----



SEVENTH STREET 60'

SIXTH STREET 63'

BROADWAY 60'

SOUTH STREET 60'

<p>69.5' 66'</p> <p>D.B. 612-899</p> <p>301</p> <p>Timothy T. & Susan A. Rambau</p> <p>DB 707-853</p>	<p>69.5' 66'</p> <p>CORY R. & ANNA WASSON</p> <p>300</p> <p>20200R-09938</p> <p>Lot Sur. Vol. 1 Pg. 161</p>	<p>69.5' 66'</p> <p>299</p> <p>D. & H. VENTERS</p> <p>D.B. 785-921</p>	<p>69.5' 66'</p> <p>298</p> <p>Heather Bailey Hoffman</p> <p>TOD OR 7-726</p>
ALLEY 12'			
<p>139'</p> <p>308</p> <p>JOHN J. & KATHRYN G. HEADAPOHL</p> <p>D.B. 588-873</p>	<p>139'</p> <p>306</p> <p>DEAN L. & MELISSA S. STUTZ</p> <p>D.B. 583-660</p>		
<p>615-004000</p> <p>309</p> <p>KATHLEEN M. GREENE</p> <p>2021OR-09704 (TOD)</p> <p>DB 778-292</p>	<p>DB 721-691</p> <p>307</p> <p>MARLEN BOURNE</p>		
ALLEY 12'			
<p>00400</p> <p>316</p> <p>Cynthia W. Dillard OR 186-588</p>	<p>00700</p> <p>314</p> <p>Thane A. & Sarah L. Buxton</p> <p>OR 224-752</p>		
<p>25A Beverage & Deli, Inc</p> <p>00500 OR 335-375</p> <p>317</p>	<p>DB 725-857</p> <p>315</p> <p>Diana L. Crumrine, Benjamin B. Crumrine, & Joshua M. Crumrine</p>		
139'		139'	