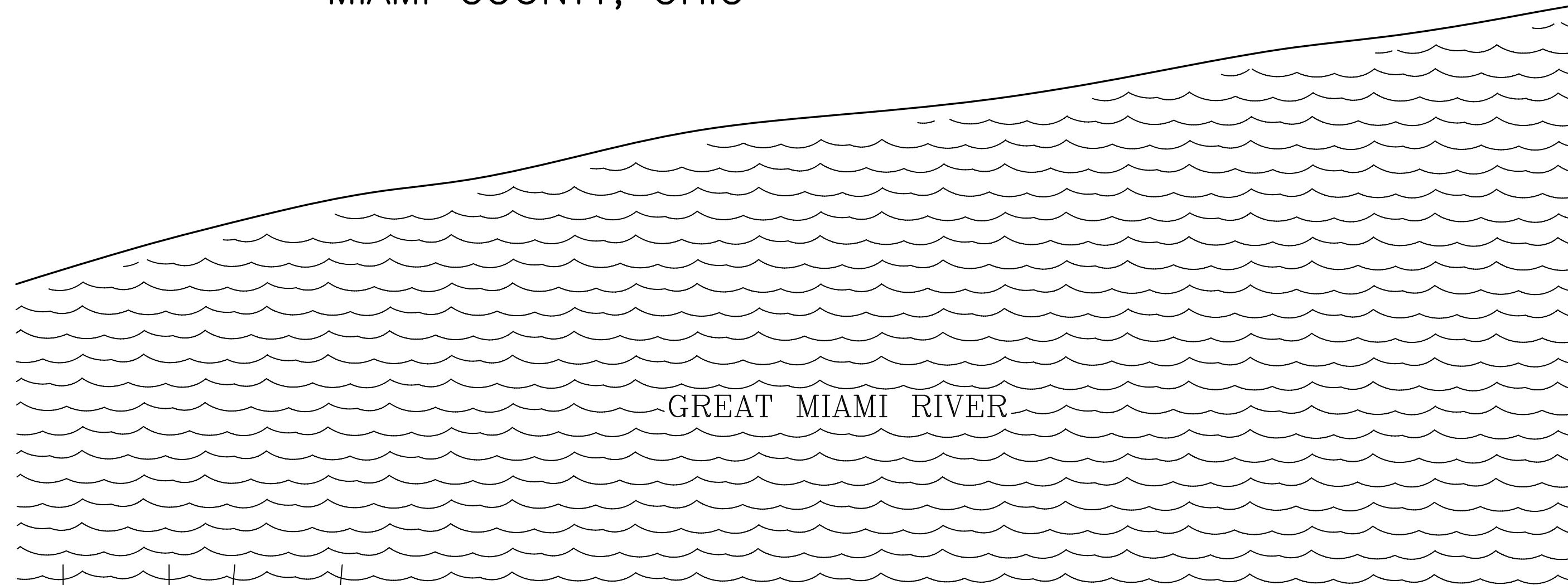
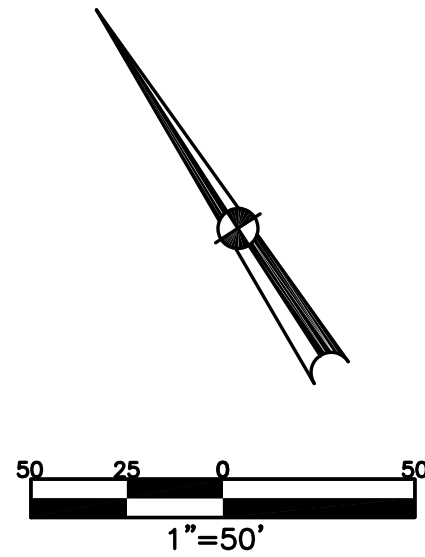


SECTION 22  
TOWN 4  
RANGE 6

CITY OF TROY  
MIAMI COUNTY, OHIO

PARCEL ID NUMBER  
D08-\_\_\_\_\_

PLAT NE 2



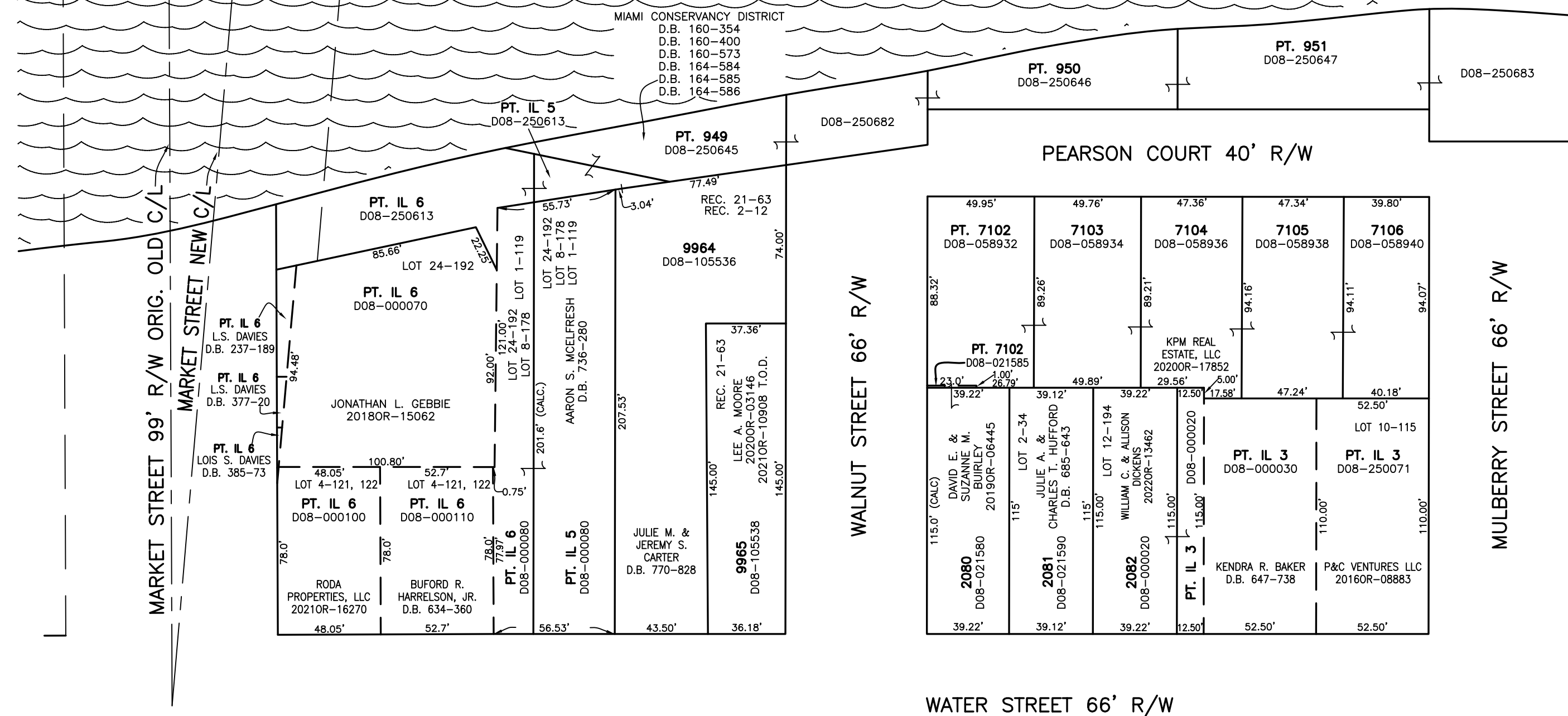
ABBREVIATION LEGEND	
2014OR-00759	= RECORDER'S DOCUMENT NUMBER
OR 406-509	= OFFICIAL RECORD 406 PAGE 509
D.B. 613-172	= DEED BOOK 613, PAGE 172
REC. 15-72	= RECORDER'S PLAT BOOK 15, PAGE 72
LND. 33-15	= LAND SURVEY VOLUME 33, PAGE 15
LOT 19-12	= LOT SURVEY VOLUME 19, PAGE 12
R.R. 8-29	= ROAD RECORD VOLUME 8, PAGE 29
R/W	= RIGHT OF WAY
C	= CENTERLINE
AC.	= ACRES
TWP.	= TOWNSHIP
TR.	= TRACT
IL	= INLOT

LINE LEGEND	
	Blow-up Boundary
	Property Line
	Lot Split Line
	Section Line
	Centerline
	Right-of-Way Line
	Corporation Line

SURVEY INDEX	
REC. 2-12	LOT 1-119
REC. 2-187	LOT 4-121
REC. 13-95	LOT 4-122
REC. 21-63	LOT 8-178
	LOT 10-115
	LOT 12-194
	LOT 24-192
D.B. 1-9, 10, 11	



ORIGINAL CITY OF TROY PLAT  
INLOTS 3, 5, & 6  
DEED BOOK 1, PGS. 9, 10, 11

SUBDIVISION OF INLOTS 4 & 950  
INLOTS 2080-2082  
REC. 2-187

PREPARED BY: MIAMI COUNTY ENGINEER'S MAP DEPARTMENT  
PAUL P. HUELSKAMP, P.E., P.S., COUNTY ENGINEER  
DATE: JUNE 14, 2017 CH  
REVISED: September 13, 2022 MSTORMS