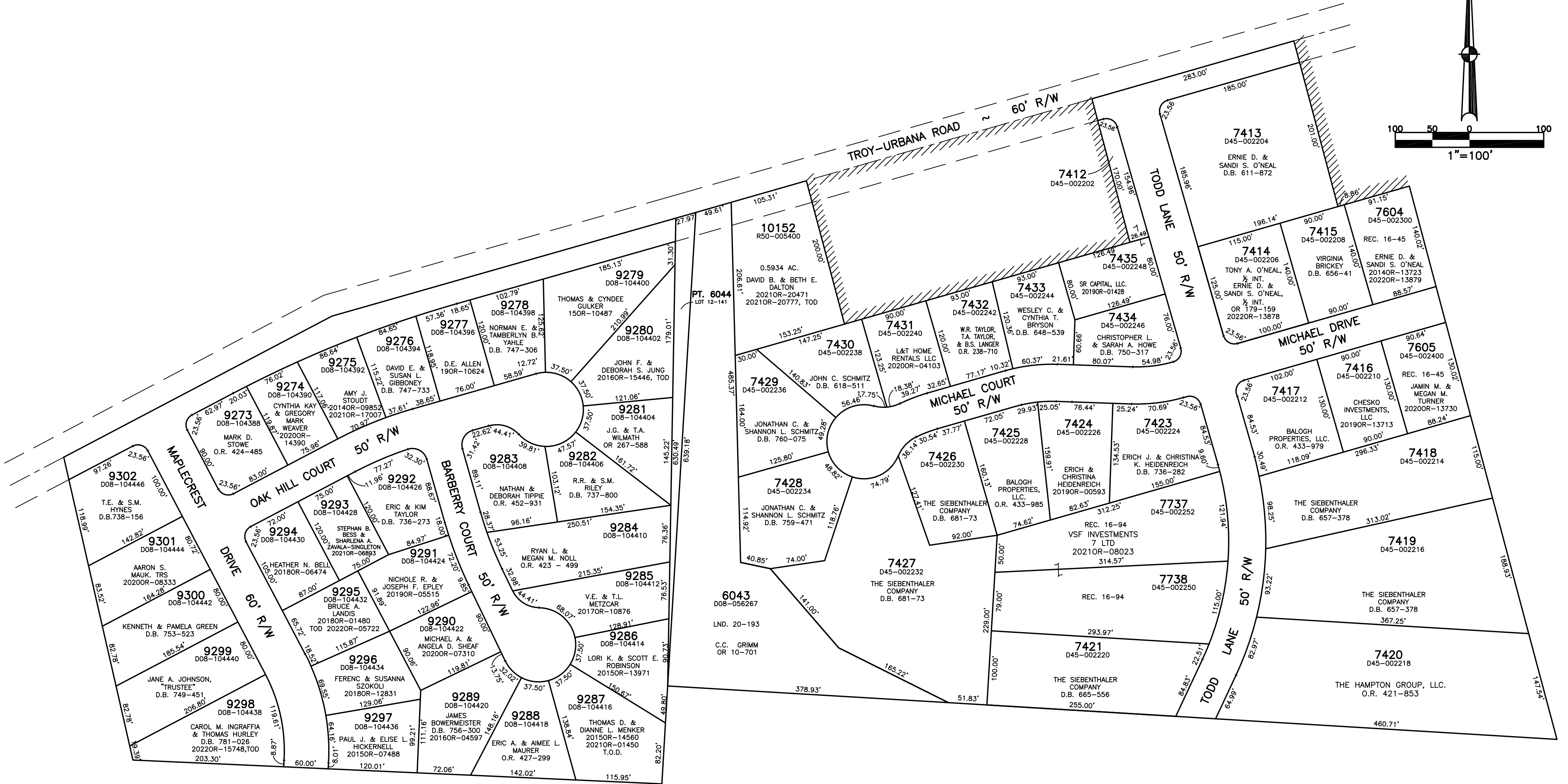
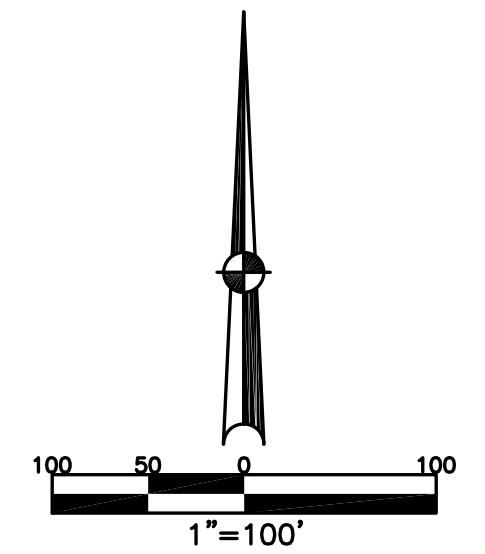


SECTION 12
TOWN 1
RANGE 10

CITY OF TROY
MIAMI COUNTY, OHIO

PARCEL ID NUMBER
DX-
R50-

PLAT NE 85



ABBREVIATION LEGEND	LINE LEGEND	SURVEY INDEX
2014OR-07759 = RECORDER'S DOCUMENT NUMBER	— Blow-up Boundary	LOT 12-141
O.R. 72-729 = OFFICIAL RECORD 72 PAGE 729	— Property Line	LND. 20-193
D.B. 613-172 = DEED BOOK 613, PAGE 172	- - - Lot Split Line	REC. 10-110
REC. 15-72 = RECORDER'S PLAT BOOK 15, PAGE 72	- - - Section Line	REC. 15-33 (ANNEXATION)
LND. 33-15 = LAND SURVEY VOLUME 33, PAGE 15	- - - Centerline	REC. 15-44 NORTHFIELD SECTION 1
LOT 19-12 = LOT SURVEY VOLUME 19, PAGE 12	- - - Right-of-Way Line	REC. 21-144 (ANNEXATION)
R.R. 8-29 = ROAD RECORD VOLUME 8, PAGE 29	- - - Corporation Line	
R/W = RIGHT OF WAY		
⊕ = CENTERLINE		
AC. = ACRES		REC. 16-45 NORTHFIELD SECTION 2 (Lots 7604 & 7605)
TWP. = TOWNSHIP		REC. 16-94 (REPLAT OF 7422)
TR. = TRACT		MAPLECREST SUBD. REC. 19-131, 131A
IL = INLOT		

PREPARED BY: MIAMI COUNTY ENGINEER'S MAP DEPARTMENT
PAUL P. HUELSKAMP, COUNTY ENGINEER
DATE: JULY 28, 2002
REVISED: November 1, 2022 MSTORMS