

SECTION 28
TOWN 5
RANGE 6

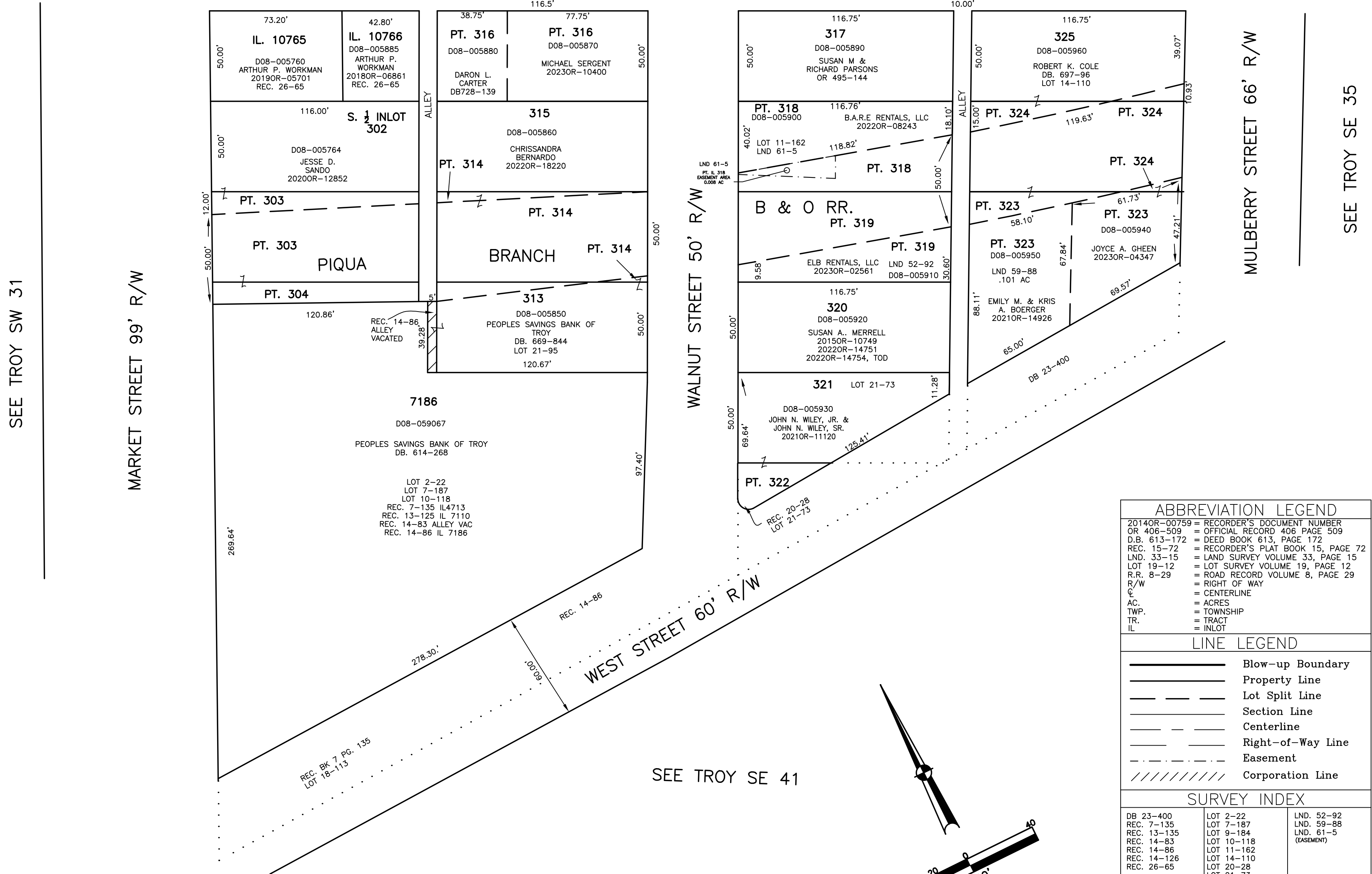
CITY OF TROY
MIAMI COUNTY, OHIO

SEE TROY SE 32

PARCEL ID NUMBER
D08-_____

PLAT SE 33

RAPER STREET 40' R/W



SEE TROY SW 31

MARKET STREET 99' R/W

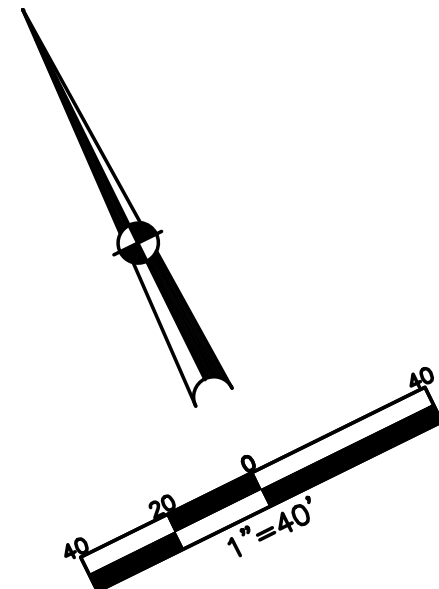
WALNUT STREET 50' R/W

WEST STREET 60' R/W

MULBERRY STREET 66' R/W

SEE TROY SE 35

SEE TROY SE 41



ABBREVIATION LEGEND		
2014OR-00759	=	RECORDER'S DOCUMENT NUMBER
OR 406-509	=	OFFICIAL RECORD 406 PAGE 509
D.B. 613-172	=	DEED BOOK 613, PAGE 172
REC. 15-72	=	RECORDER'S PLAT BOOK 15, PAGE 72
LND. 33-15	=	LAND SURVEY VOLUME 33, PAGE 15
LOT 19-12	=	LOT SURVEY VOLUME 19, PAGE 12
R.R. 8-29	=	ROAD RECORD VOLUME 8, PAGE 29
R/W	=	RIGHT OF WAY
CL	=	CENTERLINE
AC.	=	ACRES
TWP.	=	TOWNSHIP
TR.	=	TRACT
IL	=	INLOT

LINE LEGEND		
	=	Blow-up Boundary
	=	Property Line
	=	Lot Split Line
	=	Section Line
	=	Centerline
	=	Right-of-Way Line
	=	Easement
	=	Corporation Line

SURVEY INDEX		
DB 23-400	LOT 2-22	LND. 52-92
REC. 7-135	LOT 7-187	LND. 59-88
REC. 13-135	LOT 9-184	LND. 61-5
REC. 14-83	LOT 10-118	(EASEMENT)
REC. 14-86	LOT 11-162	
REC. 14-126	LOT 14-110	
REC. 26-65	LOT 20-28	
	LOT 21-73	
	LOT 21-95	

PREPARED BY: MIAMI COUNTY ENGINEER'S MAP DEPARTMENT
PAUL P. HUELSKAMP, P.E., P.S., COUNTY ENGINEER
DATE: AUGUST 7, 2019 MBR
REVISED: September 21, 2023 APALMER