

MIAMI COUNTY, OHIO
CITY OF TROY

S.E. PLAT 62

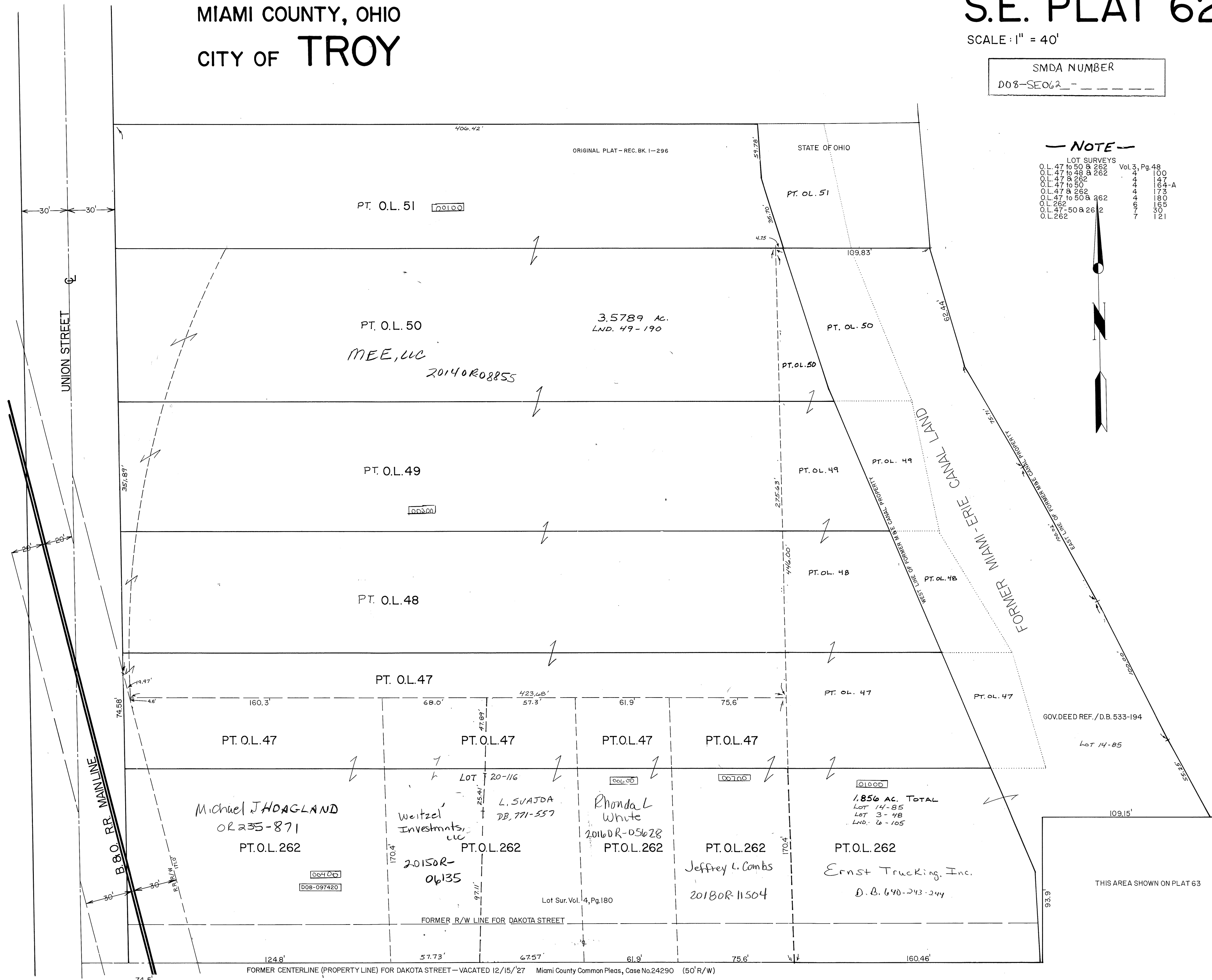
SCALE: 1" = 40'

SMDA NUMBER
D08-SE062 -

NOTE

LOT SURVEYS

Lot	Vol.	Pg.
O.L. 47 to 50 & 262	4	100
O.L. 47 & 262	4	147
O.L. 47 to 48 & 262	4	164-A
O.L. 47 to 50	4	173
O.L. 47 & 262	4	180
O.L. 47 to 50 & 262	6	165
O.L. 262	7	301
O.L. 47-50 & 262	7	121



FORMER CENTERLINE (PROPERTY LINE) FOR DAKOTA STREET - VACATED 12/15/27 Miami County Common Pleas, Case No. 24290 (50' R/W)

REVISED 8-21-2008
D. VENTURA