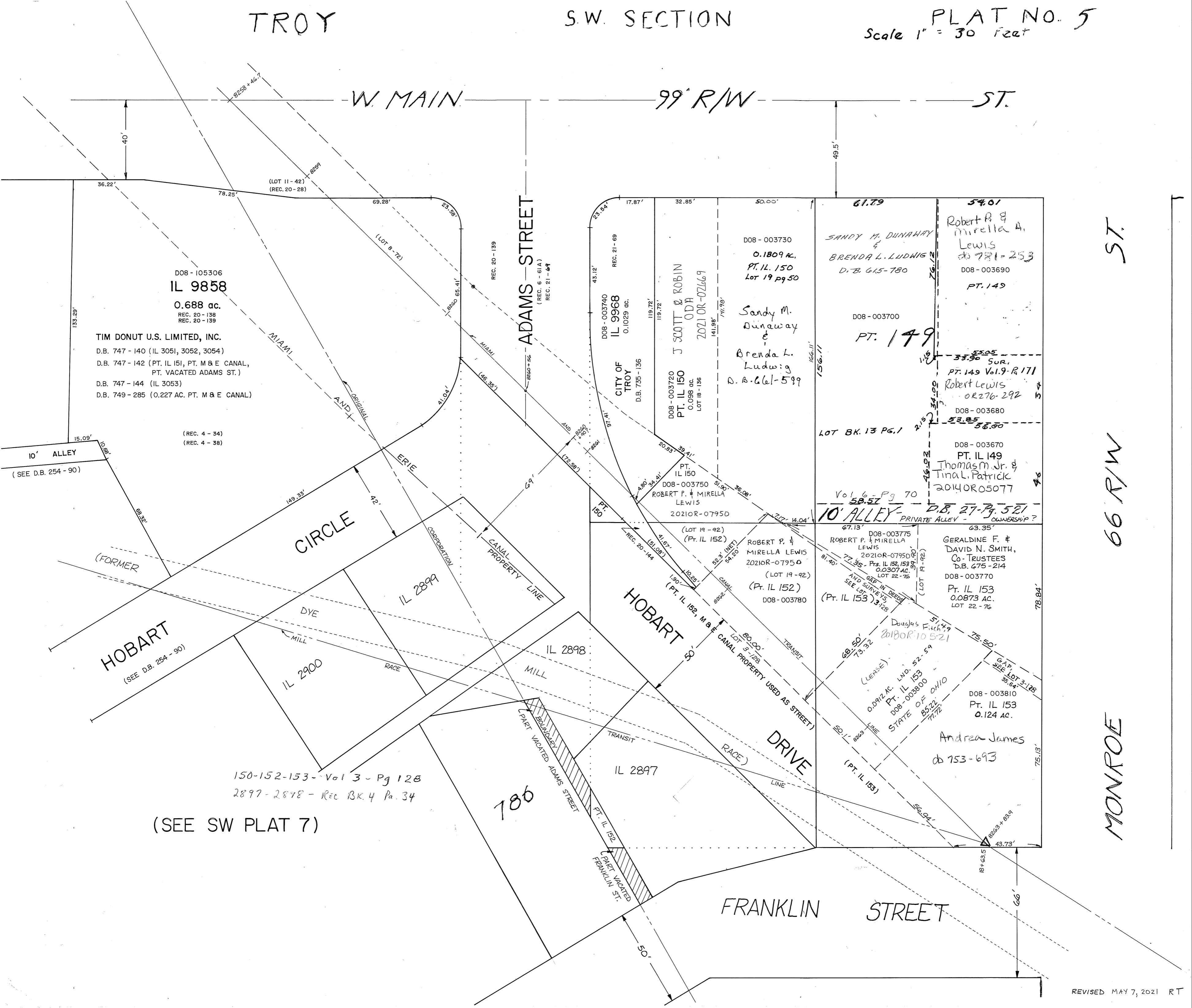


TROY

S.W. SECTION

PLAT NO. 5
Scale 1" = 30 Feet



D08-105306
IL 9858

0.688 ac.
REC. 20-138
REC. 20-139

TIM DONUT U.S. LIMITED, INC.

D.B. 747-140 (IL 3051, 3052, 3054)
D.B. 747-142 (PT. IL 151, PT. M & E CANAL,
PT. VACATED ADAMS ST.)
D.B. 747-144 (IL 3053)
D.B. 749-285 (0.227 AC. PT. M & E CANAL)

(REC. 4-34)
(REC. 4-38)

10' ALLEY
(SEE D.B. 254-90)

CIRCLE

ADAMS STREET

99' R/W

ST.

HOBART

(SEE D.B. 254-90)

IL 2900

IL 2899

IL 2898

IL 2897

786

DRIVE

HOBART ST

FRANKLIN STREET

(SEE SW PLAT 7)

150-152-153 - Vol 3 - Pg 128
2897-2898 - Rec BK. 4 Pa. 34

ST.

66' R/W

MONROE