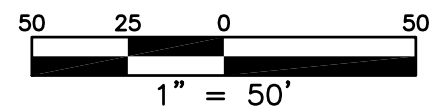
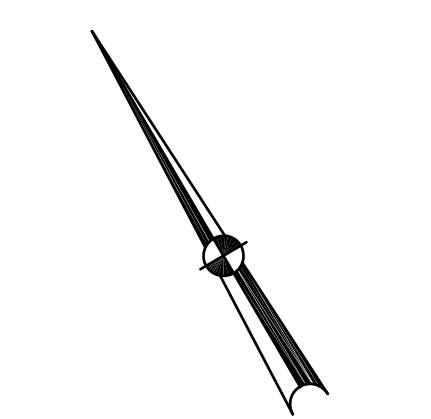


CITY OF TROY

MIAMI COUNTY, OHIO

SECTION 28 TOWN 5 RANGE 6

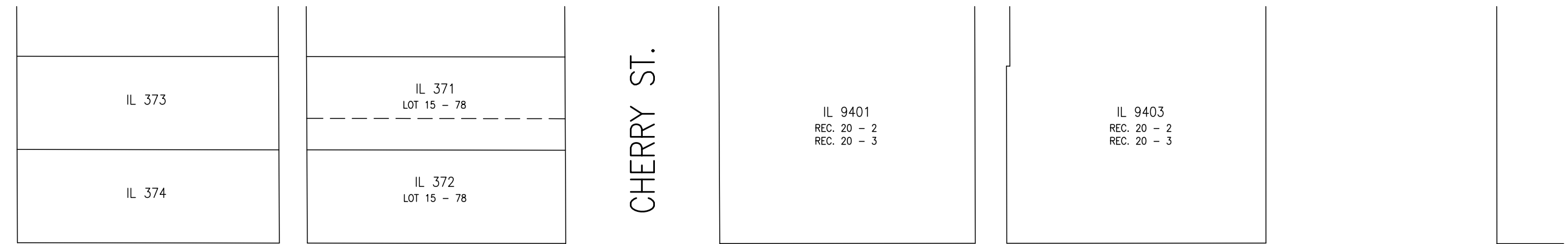
PLAT SW 14



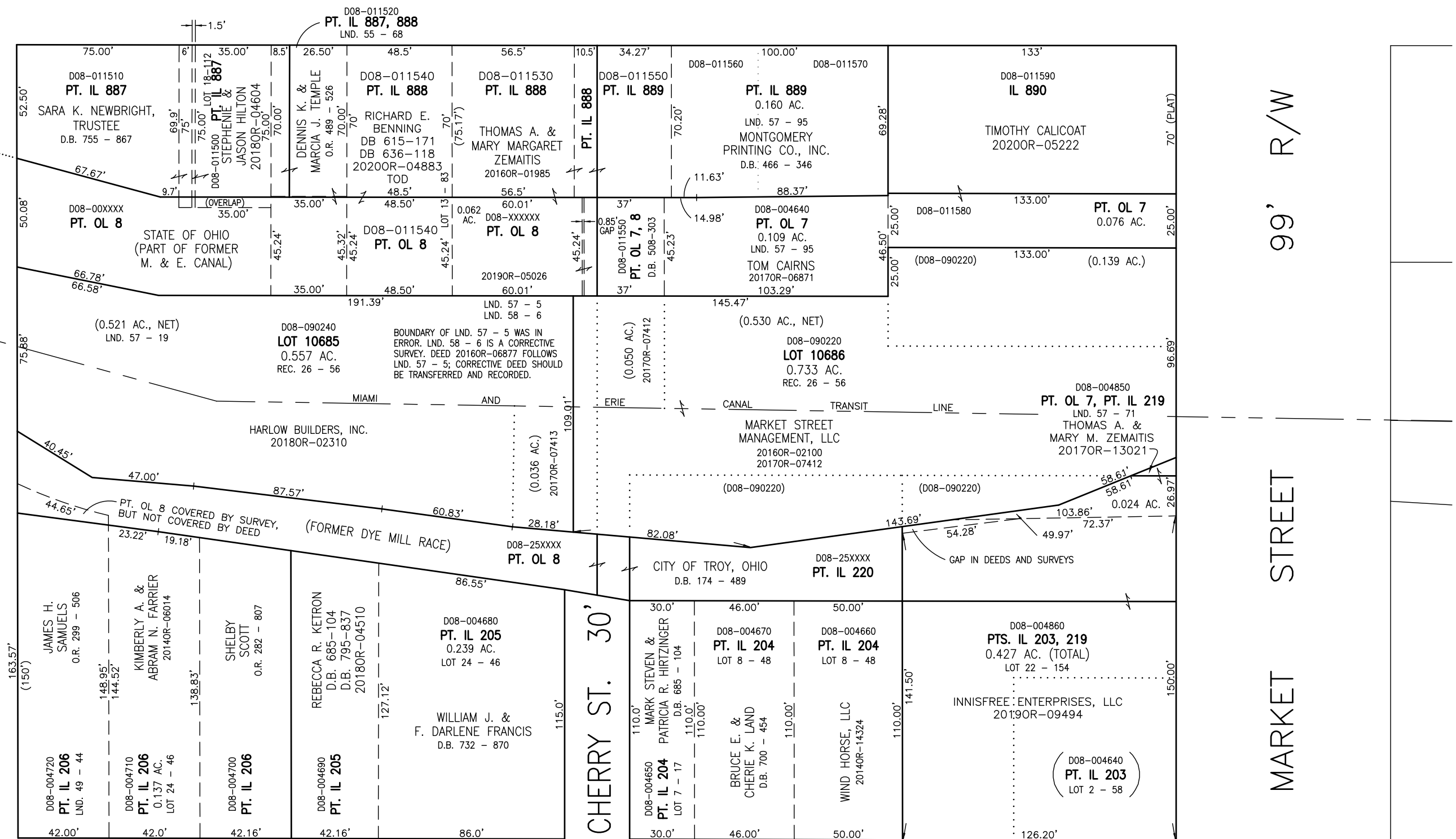
ABBREVIATION LEGEND	
2014OR-07759	= RECORDER'S DOCUMENT NUMBER
OR 406-509	= OFFICIAL RECORD 406 PAGE 509
D.B. 613-172	= DEED BOOK 613, PAGE 172
REC. 15-72	= RECORDER'S PLAT BOOK 15, PAGE 72
LND. 33-15	= LAND SURVEY VOLUME 33, PAGE 15
LOT 19-12	= LOT SURVEY VOLUME 19, PAGE 12
R.R. 8-29	= ROAD RECORD VOLUME 8, PAGE 29
R/W	= RIGHT OF WAY
CL	= CENTERLINE
AC.	= ACRES
TWP.	= TOWNSHIP
TR.	= TRACT
IL	= INLOT

SURVEY INDEX		
LOT 2 - 58	LND. 49 - 44	D.B. 1 - 9, 10
LOT 7 - 17	LND. 55 - 68	D.B. 14 - 292
LOT 8 - 48	LND. 57 - 5	REC. 2 - 11
LOT 13 - 83	LND. 57 - 19	REC. 26 - 56
LOT 18 - 112	LND. 57 - 71	
LOT 22 - 154	LND. 57 - 95	
LOT 24 - 46	LND. 58 - 6	

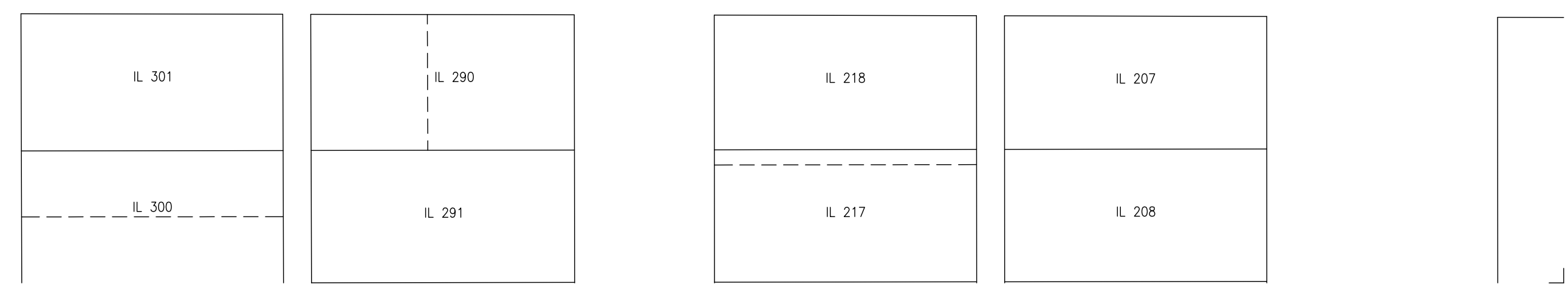
OUTLOTS 7 AND 8 - D.B. 1, PG. 9 AND 10
 REVISED ORIGINAL PLAT OF TROY
 INLOTS 203 THRU 206 - D.B. 14, PG. 292
 ASA COLEMAN'S SUBDIVISION
 INLOTS 887 THRU 890 - REC. 2 - 11
 ASSESSOR'S PLAT OF 1880



CANAL STREET 66' R/W



RACE STREET 60' R/W



PREPARED BY: MIAMI COUNTY ENGINEER'S MAP DEPARTMENT
 PAUL P. HUELSKAMP, P.E., P.S., COUNTY ENGINEER
 DATE: OCTOBER 13, 2016 A.S.
 REVISED: April 28, 2020 MHEMSWORTH