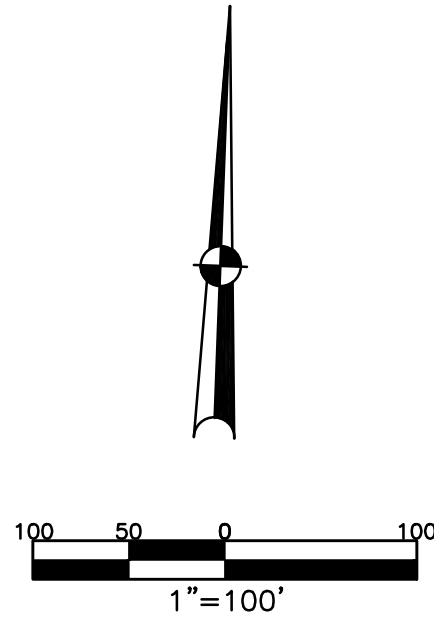


SECTION 29
TOWN 5
RANGE 6

CITY OF TROY
MIAMI COUNTY, OHIO

PARCEL ID NUMBER
D08-_____

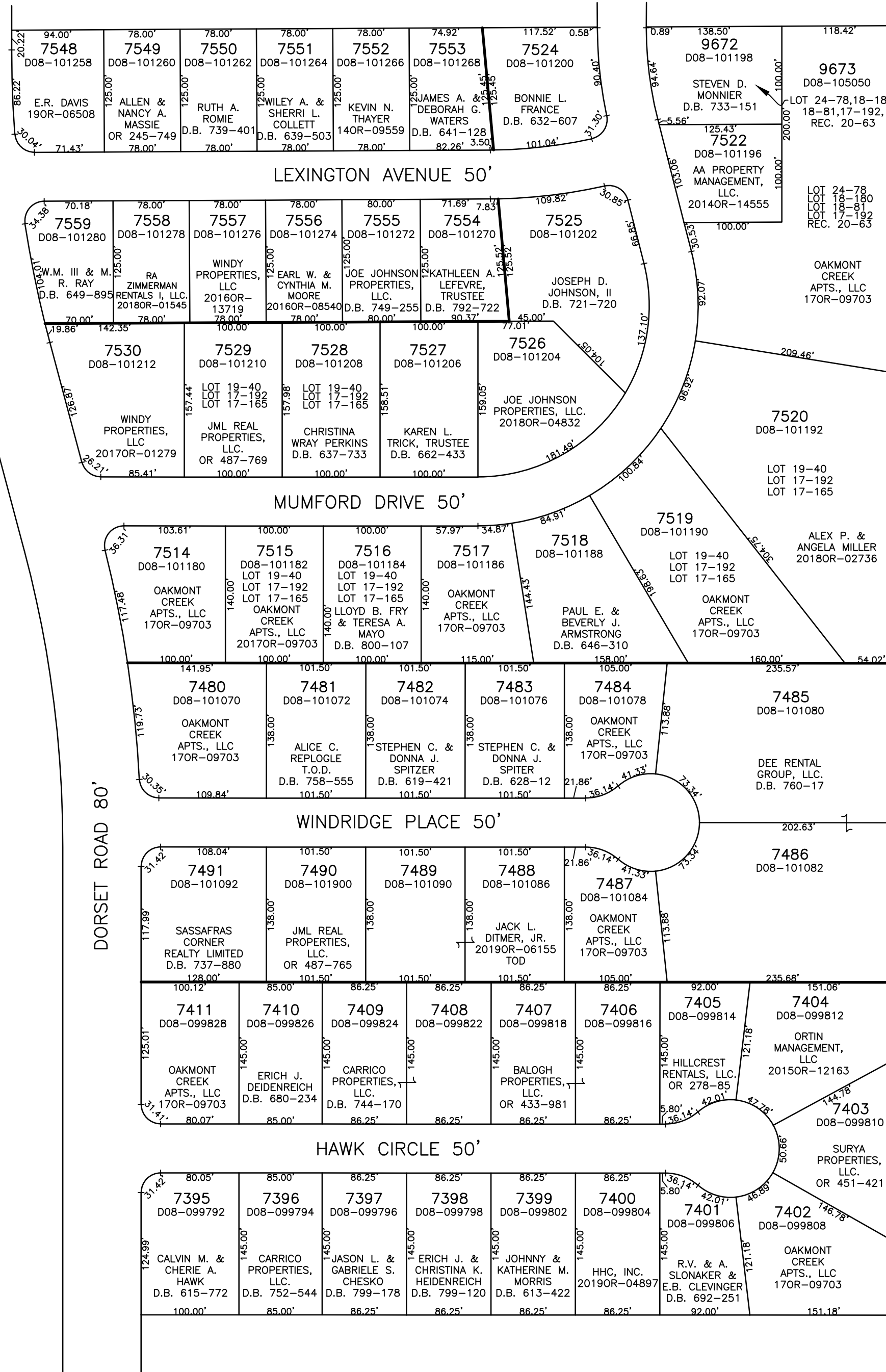
PLAT SW 177



ABBREVIATION LEGEND	
2014OR-07759	= RECORDER'S DOCUMENT NUMBER
OR 406-509	= OFFICIAL RECORD 406 PAGE 509
D.B. 613-172	= DEED BOOK 613, PAGE 172
REC. 15-72	= RECORDER'S PLAT BOOK 15, PAGE 72
LND. 33-15	= LAND SURVEY VOLUME 33, PAGE 15
LOT 19-12	= LOT SURVEY VOLUME 19, PAGE 12
R.R. 8-29	= ROAD RECORD VOLUME 8, PAGE 29
R/W	= RIGHT OF WAY
C	= CENTERLINE
AC.	= ACRES
TWP.	= TOWNSHIP
TR.	= TRACT
IL	= INLOT

LINE LEGEND	
	Blow-up Boundary
	Property Line
	Lot Split Line
	Section Line
	Centerline
	Right-of-Way Line
	Corporation Line

SURVEY INDEX		
REC. 15-43	LOT 17-165	
REC. 15-92	LOT 17-192	
REC. 15-127	LOT 18-81	
REC. 16-7	LOT 18-180	
REC. 20-63	LOT 19-40	
	LOT 24-78	



HAWK COVE
REC. 15-43
LOTS 7395-7411

WINDRIDGE PLACE
SECTION 1
REC. 15-92
LOTS 7480-7491

WINDRIDGE PLACE
SECTION 2
REC. 15-127
LOTS 7514-7520
7522
7524-7525

REC. 20-63
LOTS 9672 & 9673

WINDRIDGE PLACE
SECTION 3
REC. 16-7
LOTS 7548-7559